

Transverse spin effects in SIDIS at 11 GeV with a transversely polarized target using the CLAS12 Detector

H. Avakian¹, S. Boyarinov, V.D. Burkert, A. Deur, L. Elouadrhiri, T. Kageya,
V. Kubarovsky, M. Lowry, B. Musch, A. Prokudin, A. Sandorfi, Yu. Sharabian, S. Stepanyan, X. Wei
Jefferson Lab, Newport News, VA 23606, USA

F. Klein¹

Department of Physics, The Catholic University of America, Washington, DC 20064, USA

M. Aghasyan¹, E. De Sanctis, D. Hasch, L. Hovsepyan, V. Lucherini

M. Mirazita, and S. Anefalos Pereira, S. Pisano, P. Rossi

LNF INFN, Frascati, I-00044, Rome Italy

K. Joo¹, N. Markov, M. Ungaro

University of Connecticut, Storrs, CT 06269, USA

L. Barion, G. Ciullo, M. Contalbrigo^{1,2}, P.F. Dalpiaz, P. Lenisa, L.L. Pappalardo, M. Statera
University of Ferrara and INFN Ferrara, Via Saragat, I-44100, Ferrara, Italy

G. De cataldo, R. De Leo, L. La Gamba, E. Nappi

University of Bari and INFN Bari, Via Orabona, I-70125, Bari, Italy

M. Battaglieri, A. Celentano, R. De Vita, M. Osipenko, G. Ricco, M. Ripani, M. Taiuti
INFN Genova, Via Dodecaneso, 33 I-16146 Genova, Italy

Y. Prok

Christopher Newport University

K. Griffioen

College of William & Mary, 23187, USA

V. Bellini, A. Giusa, F. Mammoliti, R. Potenza, G. Russo, L. Sperduto, C. Sutura
University of Catania and INFN Catania, Via S. Sofia, I-95123 Catania, Italy

R. Perrino

INFN Lecce, Via Arnesano, I-73100 Lecce, Italy

K. Hafidi, J. Arrington, L. El Fassi, D. F. Geesaman, R. J. Holt,

D. H. Potterveld, P. E. Reimer, P. Solvignon

Argonne National Lab, Argonne, IL 60439, USA

J. Ball, A. Fradi, M. Garçon, M. Guidal, S. Niccolai, F. Sabatié

IPNO (Orsay), SPhN (Saclay) France

¹Co-spokesperson

²Contact person

M. Amarian, G. Dodge, G. Gavalian Old Dominion University, Norfolk, VA 23529, USA

A. D'Angelo, C. Schaerf, I. Zonta

Dipartimento di Fisica, Universita' di Roma Tor Vergata,

INFN Sezione di Roma Tor Vergata, Via della Ricerca Scientifica, I-00133, Rome, Italy

A. Biselli

Fairfield University, Fairfield CT 06824, USA

F. Meddi, G.M. Urciuoli

INFN Roma I, P.le aldo Moro, I-00185, Roma, Italy

E. Cisbani, A. Del Dotto, F. Garibaldi, S. Frullani

INFN Roma I and Istituto Superiore di Sanita', Viale Regina Elena, I-00161, Roma, Italy

M. Capogni

INFN Roma I and ENEA Casaccia, Via Anguillarese, I-00123, Roma, Italy

A. Puckett Los Alamos National Laboratory, Los Alamos, NM 87545, USA

M. Anselmino, A. Kotzinian, B. Parsamyan,

Università di Torino and INFN, Sezione di Torino, Via P. Giuria 1, I-10125 Torino

A. Bacchetta, M. Radici, B Pasquini

Università di Pavia and INFN Sezione di Pavia, via Bassi 6, 27100 Pavia, Italy

M. Anselmino, A. Kotzinian, B. Parsamyan

Università di Torino and INFN, Sezione di Torino, Via P. Giuria 1, I-10125 Torino

L. Gamberg

Penn State Berks, Reading, PA 19610, USA

Abstract

We propose to study spin azimuthal asymmetries in semi-inclusive DIS (SIDIS) using an 11 GeV polarized electron beam from the upgraded CEBAF facility and the CLAS12 detector equipped with a transversely polarized target. The main focus of the experiment will be the measurement of transverse target single- and double-spin asymmetries (TTSA) in the reaction $ep^\uparrow \rightarrow ehX$, where h is a meson (e.g. a pion or a kaon) and X is the undetected final state. In particular, three single-spin asymmetries (SSA) will be measured, each providing access to a specific leading-twist parton distribution function (PDF): the transversity, the Sivers function and the so-called “pretzelosity” function. In a transversely polarized nucleon, the Sivers function describes the distribution of unpolarized quarks, whereas the transversity and “pretzelosity” functions describe the distribution of transversely polarized quarks. The transversity is the least known of the three fundamental collinear PDFs of the nucleon, while the Sivers and the “pretzelosity” functions are transverse-momentum-dependent (TMD) PDFs, i.e. they vanish in the collinear approximation. The joint use of a longitudinally polarized beam and a transversely polarized target will also allow us to measure double-spin asymmetries (DSA) related to an unmeasured leading-twist TMD distribution function describing the distribution of longitudinally polarized quarks in a transversely polarized nucleon (*worm-gear*). The expected asymmetries from the leading-order calculations and Monte Carlo studies are in the range of 2 to 10%, depending on the kinematics and on the models used for the PDFs. The x , Q^2 , z and $\mathbf{P}_{h\perp}$ dependences of the TTSA will be studied in a wide kinematic range.

A total of 100 days of beam time is requested for this experiment.

Contents

1	Introduction	5
2	Theory and Motivation	6
2.1	The leading-twist TMDs	6
2.2	The SIDIS cross-section	9
2.3	SIDIS with a Transversely Polarized Target	12
2.4	Present Experimental Results on Spin-Azimuthal Asymmetries	12
2.5	The Impact of CLAS12 Measurements	17
3	Experimental Situation	21
3.1	The Present Experiments	21
3.2	JLab Proposals	21
4	A Dedicated SIDIS Experiment with a Transversely Polarized Target and CLAS12	22
4.1	The CLAS12 Configuration	23
4.1.1	The HD-Ice Transversely Polarized Target	23
4.1.2	A Magnetic System for the CLAS12 Transverse Target	25
4.1.3	Target Polarization Measurements	29
4.1.4	The Impact of Møller Scattering	30
4.2	The CLAS12 Particle Identification	30
4.3	The CLAS12 RICH detector	32
4.3.1	Preliminary Monte Carlo results	33
4.4	The Measurement	38
4.4.1	Event Identification, Reconstruction, and Acceptances	38
4.4.2	Acceptance and Data Analysis	40
4.4.3	Count Rates and Statistical Errors	41
4.4.4	Systematic Errors	41
4.5	Projected Results	43
4.6	Fourier Transformed Cross Sections	51
5	Summary and Beam Time Request	55

1 Introduction

One of the main objectives of the Jefferson Lab upgrade is the understanding of the internal structure of the nucleon and nucleus in terms of quarks and gluons, the fundamental degrees of freedom of Quantum Chromodynamics (QCD). The partonic structure of hadrons beyond the collinear approximation, or 3D structure of the nucleon, can be described by two new categories of parton distributions: the transverse momentum dependent parton distributions (TMDs) [1, 2, 3, 4, 5, 6, 7, 8], and the generalized parton distributions (GPDs) [9, 10, 11, 7, 12, 13, 14, 15].

The ultimate knowledge of finding a single parton inside a hadron – involving both momentum and space information – can be encoded in the phase-space distributions of quantum mechanics, such as the Wigner quasi-probability distribution $W(k_T, b)$, whose integration over the parton spatial dependence (b) leads to the TMDs, while its integration over transverse momentum (k_T) provides the parton’s spatial distribution that is relevant to the GPDs. Understanding both the momentum and spatial distribution of a parton inside a hadron in terms of the more general Wigner distributions could be the central object of future studies on partonic structure. The concept of Wigner distributions in QCD for quarks and gluons was first explored in Refs. [16, 7], introducing the definition of a Wigner operator whose matrix elements in the nucleon states were interpreted as distributions of the partons in a six-dimensional space (three position and three momentum coordinates). The link with GPDs was exploited to obtain three-dimensional spatial images of the proton which were interpreted as charge distributions of the quarks for fixed values of the Feynman variable x .

Significant progress has been recently made in understanding the role of partonic initial and final state interactions [17, 18, 19]. The interaction between the active parton in the hadron and the spectators leads to gauge-invariant transverse momentum dependent (TMD) parton distributions [17, 18, 19, 20, 21, 22]. Furthermore, QCD factorization for semi-inclusive deep inelastic scattering at low transverse momentum in the current-fragmentation region has been established in Refs. [23, 24]. This new framework provides a rigorous basis to study the TMD parton distributions from SIDIS data using different spin-dependent and spin-independent observables. TMD distributions (see Table 1) describe different spin-spin and spin-orbit correlations in the momentum space [25, 8, 26, 27]. Similar correlations arise in the hadronization process. One particular case is the Collins T -odd fragmentation function H_1^\perp [28], describing fragmentation of transversely polarized quarks into unpolarized hadrons. Knowledge of TMDs is also crucial for understanding phenomena in high energy hadronic scattering processes, such as, the single transverse spin asymmetries [17, 29, 18, 19, 20, 30].

We propose a high luminosity ($10^{34} \text{ cm}^{-2}\text{s}^{-1}$) measurement of transverse target single-spin asymmetries in SIDIS using the CLAS12 detector in Hall B with an 11 GeV longitudinally polarized electron beam and the transversely polarized HD-Ice

N/q	U	L	T
U	$\mathbf{f_1}$		h_1^\perp
L		$\mathbf{g_1}$	h_{1L}^\perp
T	f_{1T}^\perp	g_{1T}^\perp	$\mathbf{h_1} \quad h_{1T}^\perp$

Table 1: Leading-twist transverse momentum-dependent distribution functions. U , L , and T stand for transitions of unpolarized, longitudinally polarized, and transversely polarized nucleons (rows) to corresponding quarks (columns).

target. The main goal of this proposal is the study of the x , Q^2 , z , and $\mathbf{P}_{h\perp}$ dependences of transverse target single-spin asymmetries (SSAs) and double-spin asymmetries (DSAs).

The proposed measurements are essential for the study of the transverse momentum-dependent distributions and, when combined with already approved CLAS12 measurements with unpolarized and longitudinally polarized targets, will constrain all chiral-odd leading twist TMDs in the range of Q^2 from 1 to 8 GeV² and x from 0.05 to 0.6, up to $P_{h\perp}$ values greater than 1 GeV/c. One of the main focuses of the proposed measurement will be the transverse momentum dependence of the underlying TMDs, and in particular of the Sivers function. The same measurement will also provide important information on different sub-leading distribution functions [31, 32].

The CLAS12 detector will provide a unique opportunity to perform the measurements over a wide range of kinematics with a single experiment.

2 Theory and Motivation

2.1 The leading-twist TMDs

The eight leading-twist TMDs are shown in Table 1. The diagonal elements are occupied by the three fundamental leading-twist parton distribution functions: the *momentum* ($f_1(x, k_T^2)$), the *helicity* ($g_1(x, k_T^2)$) and the *transversity* ($h_1(x, k_T^2)$) distributions. They are the only ones that survive after integration over the intrinsic transverse momentum k_T , and are all needed for a complete description of the collinear nucleon structure.

The transversity distribution [1, 33] and its first moment, the tensor charge, are as fundamental for understanding of the spin structure of the nucleon as are the helicity distribution g_1 and the axial vector charge. Differently from g_1 , h_1 is chirally odd, i.e. requires a quark helicity flip that cannot be achieved in inclusive DIS. For non-relativistic quarks h_1 is equal to the helicity distribution g_1 , thus any differences among the two functions probes the relativistic nature of quarks. The h_1 function has a very different Q^2 evolution than g_1 since there is no gluon transversity in

the nucleon. The tensor charge is reliably calculable in lattice QCD with $\delta\Sigma = \sum_f \int_0^1 dx (h_1^f - \bar{h}_1^f) = 0.562 \pm 0.088$ at $Q^2=2 \text{ GeV}^2$, which is twice as large as the value of the axial charge [34]. A similar quantity ($\delta\Sigma \approx 0.6$) was obtained in the effective chiral-quark-soliton model [35].

The off-diagonal TMD distributions for transversely polarized quarks arise from interference between amplitudes with left- and right-handed polarization states, and only exist because of chiral symmetry breaking in the nucleon wave function in QCD. Their study therefore provides a new avenue for probing the chiral nature of the partonic structure of hadrons.

Among the off-diagonal elements, the Sivers function ($f_{1T}^\perp(x, k_T^2)$) is of particular interest. It describes the difference between the probability to find a quark with light-cone momentum fraction x and transverse momentum k_T inside a hadron polarized transversely to its momentum direction, and the one where the polarization points in the opposite direction. The Sivers function has been phenomenologically extracted by several groups, mainly from analyzing the azimuthal distribution of a single hadron in SIDIS [36, 37, 38, 39].

Important aspects of the TMD parton distributions, such as gauge invariance, the role of gauge links, and universality, have been explored in recent years [18, 19, 20, 22, 30, 40, 41, 42]. Like the PDFs, the definition of TMDs is closely connected to the factorization of physical cross sections, and it is necessary for the TMDs to include all leading power long-distance contributions to the physical cross sections if they can be factorized. All leading power collinear gluon interactions are summed into the gauge links in the definition of the TMDs. It is the gauge link that makes the TMDs gauge invariant and provides the necessary phase for generating a sizable single transverse spin asymmetry (SSA) in SIDIS and Drell-Yan processes [17, 18, 19, 20, 22, 29]. However, unlike the PDFs, which are universal, the TMDs could be process dependent due to the fact that the initial-state and final-state collinear gluon interactions are summed into two different gauge links. That is, the TMDs extracted from SIDIS could be different from those extracted from Drell-Yan processes because of the difference in gauge links. Although the TMDs are not in general universal, it can be shown from the parity and time-reversal invariance of QCD dynamics that the process dependence of the spin-averaged as well as spin-dependent TMDs involves only a sign change, which was referred to as the parity and time-reversal modified universality [18, 30]. An important example of the modified universality is that the Sivers function extracted from the SIDIS measurements is opposite in sign from the Sivers function extracted from the Drell-Yan process. The test of the sign change of the Sivers function from SIDIS to Drell-Yan is a critical test of the TMD factorization and several Drell-Yan proposals were approved to measure TMDs [43, 44] and perform that test [45]. The possibility of a node in the x -dependence of the Sivers function has been discussed in light of this important test [46]. As the Sivers function describes a difference of probabilities it is not necessarily positive definite.

Recent measurements of multiplicities and double spin asymmetries as a function

of the final transverse momentum of pions in SIDIS at JLab [47, 48] suggest that transverse momentum distributions may depend on the polarization of quarks and possibly also on their flavor. Calculations of transverse momentum dependence of TMDs in different models [49, 50, 51, 52] and on lattice [53, 54] indicate that the dependence of the transverse momentum distributions on the quark polarization and flavor may be very significant. There are some indications that the transverse momentum dependence of the Sivers functions, important for comparison of Sivers function measurements from different processes and the corresponding collinear higher twist, may also not be trivial [55].

Studies of the shape of the proton indicate [56, 57] that for transversely polarized quarks in a transversely polarized nucleon, the shape of the nucleon is reminiscent of a pretzel. The distribution of transversely polarized quarks in a transversely polarized nucleon is described by the TMD $h_{1T}^\perp(x, k_T^2)$ and its magnitude will thus be related to the “pretzelosity” of the proton [56]. Recently it has been suggested, based on some quark models, that the pretzelosity TMD may also be related to the quark orbital angular momentum (OAM) [58, 59, 60, 61]

$$\mathcal{L}_z^q = - \int dx d^2k_\perp \frac{k_T^2}{2M^2} h_{1T}^{\perp q}(x, k_T^2). \quad (1)$$

The TMD h_{1T}^\perp corresponds to the amplitude where the nucleon and active quark longitudinal polarizations flip in opposite directions, involving therefore a change by two units of OAM between the initial and final nucleon states. It was shown (see *e.g.* [62]) that in a gauge theory, in general, \mathcal{L}_z^q may not be related to the total quark contribution to the nucleon spin from a combination of GPDs from Ji’s sum-rule [63].

Another interesting TMD distribution function accessible in studies with transversely polarized nucleons is the *worm-gear* $g_{1T}^\perp(x, k_T^2)$. It describes the probability to find longitudinally polarized quarks in a transversely polarized nucleon. Noteworthy, it is the only TMD function not affected by initial- or final-state interactions as it is neither chiral-odd nor T-odd. It can be accessed, in conjunction with the spin-independent fragmentation function D_1 , in double-spin asymmetries with a longitudinally polarized beam and a transversely polarized nucleon.

There have been many interesting model studies recently, see for example [64, 60, 65, 66, 51, 26]. These models and their calculations could play a very important role as a first step to describe the experimental observations, to give an intuitive way to connect the physical observables to the partonic dynamics, and to provide key inputs to the partonic structure of the nucleon. This will help us to address fundamental questions, such as how the quark spin and its orbital angular momentum contribute to the nucleon spin? More importantly, very exciting results of TMDs have come from recent lattice QCD calculations [53, 67, 54], indicating that spin-orbit correlations could change the transverse momentum distributions of partons.

2.2 The SIDIS cross-section

In recent years, semi-inclusive deep inelastic scattering (SIDIS) has emerged as a powerful tool to probe the nucleon structure through measurements of single- and double-spin asymmetries [68, 69, 70, 71]. In contrast to inclusive deep inelastic lepton-nucleon scattering, where the transverse momentum is integrated out, these processes are sensitive to transverse momentum scales on the order of the intrinsic quark momentum. Measurements of SSAs in SIDIS provide access to a list of novel physics observables including transversity (h_1) [1, 33] and the time-reversal odd Sivers distribution function (f_{1T}^\perp) [72, 73, 17, 18, 19].

The SIDIS cross section can be decomposed in terms of Structure Functions [23, 8], each related to a specific azimuthal modulation:

$$\begin{aligned}
\sigma(\phi, \phi_S) \equiv \frac{d^6\sigma}{dx dy dz d\phi d\phi_S dP_{h\perp}^2} &= \frac{\alpha^2}{xyQ^2} \frac{y^2}{2(1-\epsilon)} \left(1 + \frac{\gamma^2}{2x} \right) \\
&\left\{ F_{UU,T} + \epsilon F_{UU,L} + \sqrt{2\epsilon(1+\epsilon)} \cos\phi F_{UU}^{\cos\phi} + \epsilon \cos(2\phi) F_{UU}^{\cos(2\phi)} \right. \\
&\quad \left. + \lambda_e \sqrt{2\epsilon(1-\epsilon)} \sin\phi F_{LU}^{\sin\phi} \right. \\
&\quad \left. + S_L \left[\sqrt{2\epsilon(1+\epsilon)} \sin\phi F_{UL}^{\sin\phi} + \epsilon \sin(2\phi) F_{UL}^{\sin(2\phi)} \right] \right. \\
&\quad \left. + S_L \lambda_e \left[\sqrt{1-\epsilon^2} F_{LL} + \sqrt{2\epsilon(1-\epsilon)} \cos\phi F_{LL}^{\cos\phi} \right] \right. \\
&\quad \left. + |S_T| \left[\sin(\phi - \phi_S) \left(F_{UT,T}^{\sin(\phi-\phi_S)} + \epsilon F_{UT,L}^{\sin(\phi-\phi_S)} \right) \right. \right. \\
&\quad \left. + \epsilon \sin(\phi + \phi_S) F_{UT}^{\sin(\phi+\phi_S)} + \epsilon \sin(3\phi - \phi_S) F_{UT}^{\sin(3\phi-\phi_S)} \right. \\
&\quad \left. + \sqrt{2\epsilon(1+\epsilon)} \sin\phi_S F_{UT}^{\sin\phi_S} + \sqrt{2\epsilon(1+\epsilon)} \sin(2\phi - \phi_S) F_{UT}^{\sin(2\phi-\phi_S)} \right. \\
&\quad \left. + |S_T| \lambda_e \left[\sqrt{1-\epsilon^2} \cos(\phi - \phi_S) F_{LT}^{\cos(\phi-\phi_S)} + \sqrt{2\epsilon(1-\epsilon)} \cos\phi_S F_{LT}^{\cos\phi_S} \right. \right. \\
&\quad \left. \left. + \sqrt{2\epsilon(1-\epsilon)} \cos(2\phi - \phi_S) F_{LT}^{\cos(2\phi-\phi_S)} \right] \right\}, \quad (2)
\end{aligned}$$

where λ_e refers to the helicity of the electron beam, S_L and S_T to the longitudinal and transverse polarization of the target nucleons (with respect to the direction of the virtual photon), and ϵ to the ratio of the longitudinal and transverse photon fluxes, which is determined by the kinematics of the lepton. Here, $q = l - l'$ is the four-momentum of the virtual photon, $Q^2 = -q^2$, $x = Q^2/2(Pq)$, $y = (Pq)/(Pl)$, ϕ_S is the azimuthal angle of the transverse spin in the scattering plane, and P is the initial nucleon momentum. The azimuthal angle ϕ is defined as the angle between the scattering plane, formed by the initial and final momenta of the electron, and the production plane, formed by the transverse momentum $P_{h\perp}$ of the observed hadron and the virtual photon (Fig. 1). The azimuthal angle ϕ_S is defined as the angle

between the scattering plane and the target spin component transverse to the virtual photon.

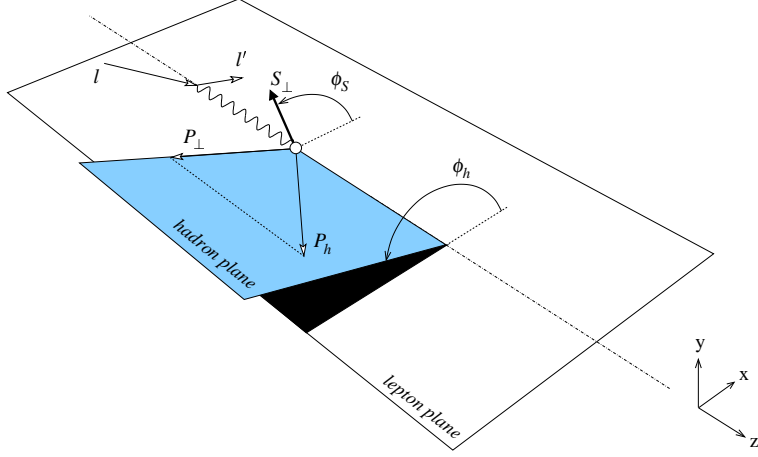


Figure 1: The SIDIS kinematics.

The subscripts in the structure functions $F_{UT,UL,LT}$, specify the beam (first index) and target (second index) polarization (U, L, T for unpolarized, longitudinally and transversely polarized targets, and U, L for unpolarized and longitudinally polarized beam).

At leading twist there are eight contributions related to different combinations of polarization states of the incoming lepton and the target nucleon. They all can be independently measured in SIDIS thanks to their specific azimuthal dependencies. The study of the terms related to unpolarized and longitudinally polarized targets are subject of different CLAS12 proposals [74, 75, 76, 77]. The structure functions factorize into TMD parton distribution and fragmentation functions, and soft and hard parts [23]. For example, $F_{UT}^{\sin(\phi+\phi_S)}$ can be written as

$$F_{UT}^{\sin(\phi+\phi_S)} = \int \frac{\vec{p}_\perp \cdot \hat{\vec{P}}_T}{M} \times h_1(x, k_T) H_1^\perp(z, p_T) S(\vec{\lambda}_\perp) H_{UT}(Q^2) . \quad (3)$$

The hard factor, H_{UT} , is calculable in pQCD, and the soft factor $S(\vec{\lambda}_\perp)$ comes from soft gluon radiation and is defined by a matrix element of Wilson lines in the QCD vacuum [23]. The integral symbol represents integration over the transverse momentum of the initial, k_T , and scattered p_T partons and the soft gluon momentum $\vec{\lambda}_\perp$ [78]. The distribution (h_1) and fragmentation (H_1^\perp) functions involved depend on the fraction of the proton momentum carried by the struck quark, x , and of the virtual photon energy fraction carried by the final state hadron, z , respectively, as well as on the corresponding transverse momenta k_T and p_T .

The TMDs define the probability density of finding a (polarized) quark with longitudinal momentum fraction x and transverse momentum k_T inside polarized and unpolarized nucleons. For example, the probability of finding an unpolarized quark with longitudinal momentum fraction x and transverse momentum k_T inside a transversely polarized target is given by:

$$\Phi^q(x, k_T; S) = f_1^q(x, k_T^2) - \frac{(\hat{P} \times k_T) S_T}{M} f_{1T}^{\perp q}(x, k_T^2). \quad (4)$$

The Siverts contribution to the $F_{UT}^{\sin(\phi-\phi_S)}$ structure function, being leading twist, is expected to survive at higher Q^2 , and this can be tested with CLAS12. At large hadron transverse momentum, *i.e.* $P_{h\perp} \gg \Lambda_{\text{QCD}}$, the transverse-momentum dependence of the various factors in the factorization formula [23] may be calculated from perturbative QCD. Following arguments in Ji-Qiu-Vogelsang-Yuan [79], the $\sin(\phi - \phi_S)$ azimuthal asymmetry (*Siverts asymmetry*) has the following behavior at $\Lambda_{\text{QCD}} \ll P_{h\perp} \ll Q$,

$$\langle \sin \phi - \phi_S \rangle|_{P_{h\perp} \gg \Lambda_{\text{QCD}}} \propto \frac{1}{P_{h\perp}}. \quad (5)$$

The above result holds also when the transverse momentum is compatible with the large-scale Q . Measurement of the $P_{h\perp}$ dependence of the Siverts asymmetry will, thus, allow to check the predictions of a unified description of SSA by Ji and collaborators [23, 79] and will study the transition from a non-perturbative to a perturbative description. The Siverts asymmetry for semi-inclusive deep inelastic scattering in the kinematic regions of CLAS12 is predicted to be significant ($\sim 10\%$ at large $P_{h\perp}$) and tends to be larger in the large- x and large- z regions. Measurement of the $P_{h\perp}$ -dependence of the Siverts asymmetry provides access to the transverse momentum-dependence of the Siverts function. This, in particular, would allow one to determine the first moment of the Siverts function:

$$f_{1T}^{\perp(1)}(x) = \int d^2 k_T \frac{k_T^2}{2M^2} f_{1T}^{\perp(1)}(x, k_T^2). \quad (6)$$

This moment has a direct connection to so-called soft gluon pole matrix elements [80, 22, 26], and, as a consequence, one may also get a direct connection to the large single spin asymmetries already observed in, for instance, $p^\uparrow p \rightarrow \pi X$ at Fermilab [81] and at RHIC [82]. Making such a cross check is crucial to understand the various transverse single-spin phenomena in semi-inclusive reactions by means of perturbative QCD. The $P_{h\perp}$ -dependence will thus provide access to the k_T -dependence of the Siverts function, which may be relevant to resolve the so-called “sign mismatch”, or the observed mismatch between the signs of the moment of the Siverts function extracted from SIDIS data and twist-3 calculations [55].

2.3 SIDIS with a Transversely Polarized Target

For a transversely polarized target, several azimuthal asymmetries already arise at leading order. Four contributions related to the transversity h_1 , Sivers f_{1T}^\perp , pretzelosity h_{1T}^\perp and worm-gear g_{1T}^\perp distribution functions were investigated in Refs. [28, 4, 3, 17, 19, 83]:

$$\begin{aligned}
\sigma_{UT}^{\sin\phi} &\propto S_T(1-y)\sin(\phi+\phi_S)\sum_{q,\bar{q}}e_q^2xh_1(x)H_1^{\perp q}(z) \\
&+ S_T(1-y+y^2/2)\sin(\phi-\phi_S)\sum_{q,\bar{q}}e_q^2xf_{1T}^{\perp q}(x)D_1^q(z) \\
&+ S_T(1-y)\sin(3\phi-\phi_S)\sum_{q,\bar{q}}e_q^2xh_{1T}^{\perp q}(x)H_1^{\perp q}(z) \\
\sigma_{LT}^{\cos\phi} &\propto \lambda_e S_T y(1-y/2)\cos(\phi-\phi_S)\sum_{q,\bar{q}}e_q^2xg_{1T}^q(x)D_1^q(z), \tag{7}
\end{aligned}$$

where y defines the fraction of electron momentum carried by the virtual photon. Here, $D_1^q(z)$ and $H_1^{\perp q}(z)$ represent the spin-independent and spin-dependent (Collins) fragmentation functions.

A detailed study of the x , Q^2 , z , and $P_{h\perp}$ dependences as a function of the azimuthal angle ϕ will allow the separation of contributions from different mechanisms. Combining the data from CLAS12 with a transversely polarized target with data from CLAS and CLAS12 with unpolarized and longitudinally polarized targets, will provide a complete set of measurements required for the separation of all eight leading-twist TMD distribution functions shown in Table 1.

It is important to note that both π^+ and π^- azimuthal moments may have significant contributions from exclusive vector meson production. The fraction of π^+ in the single pion sample, coming from exclusive ρ^0 decays, is significant at large z and at small x . The two-pion data from this experiment will allow us to extract exclusive two-pion asymmetries and estimate their contribution to the single pion SSA.

A full program to extract TMDs from measurements requires coverage of a large kinematic range in x , z , and $P_{h\perp}$ along with sensitivity on Q^2 dependence, very good hadron identification (to allow *flavor tagging*), and the use of polarized beam and polarized targets (both longitudinal and transverse polarizations).

2.4 Present Experimental Results on Spin-Azimuthal Asymmetries

During the last few years, the first results on transverse SSAs have become available [69, 70, 71, 84, 85, 86]. HERMES and COMPASS measurements for the first time directly indicated significant azimuthal moments generated both by the Collins and the Sivers effects.

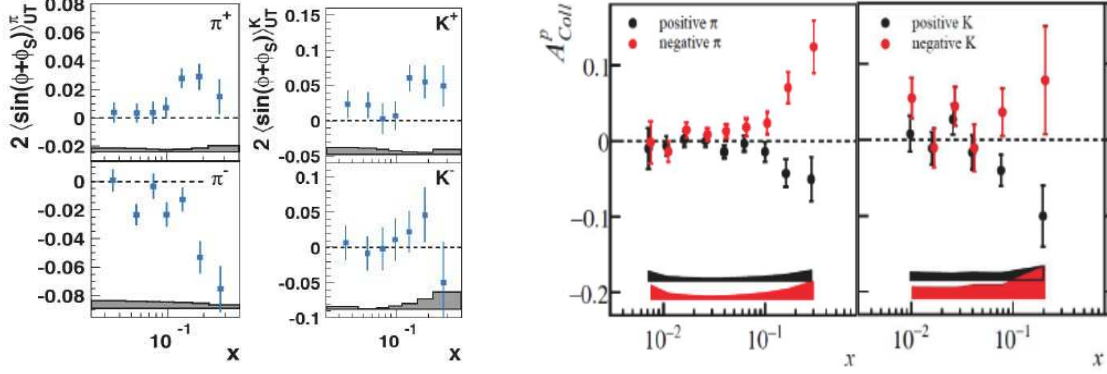


Figure 2: Collins asymmetries measured for identified charged hadrons at HERMES [84] (Left) and COMPASS [87] (Right).

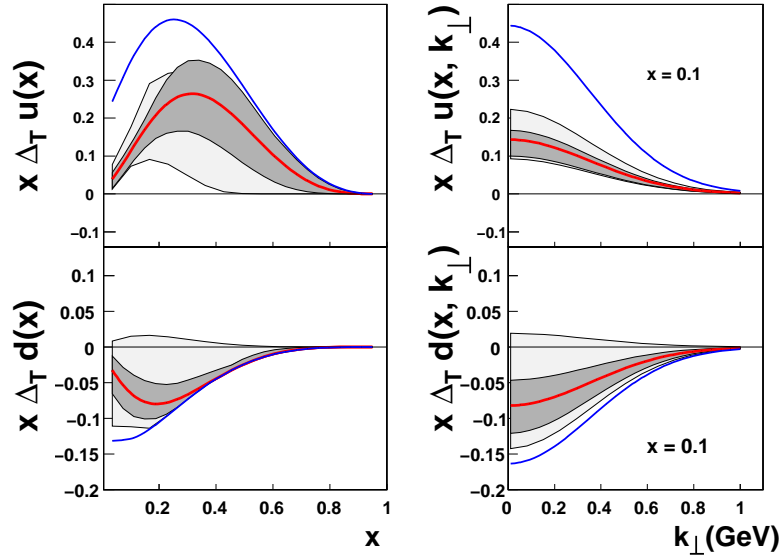


Figure 3: Transversity distribution functions for u and d flavors as extracted in [88].

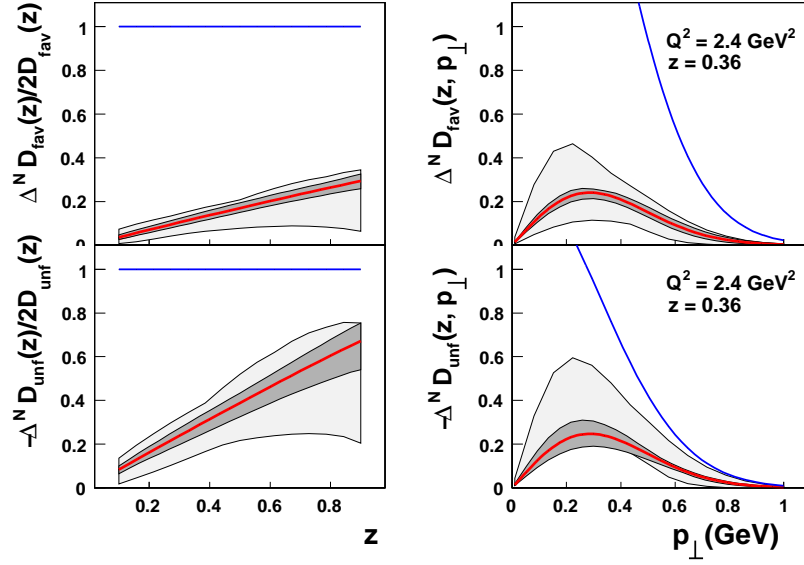


Figure 4: Favored and unfavored Collins fragmentation functions as extracted in [88].

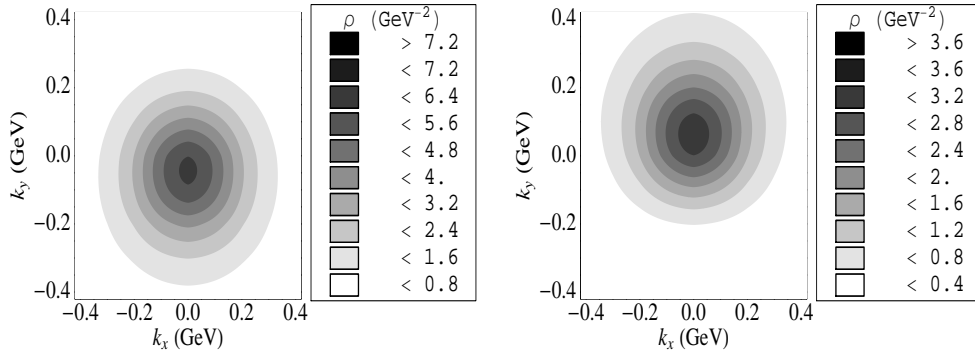


Figure 5: Spin density in the transverse-momentum plane for unpolarized quarks in a transversely polarized nucleon [66]. The left panel is for up quarks, and the right panel for down quarks.

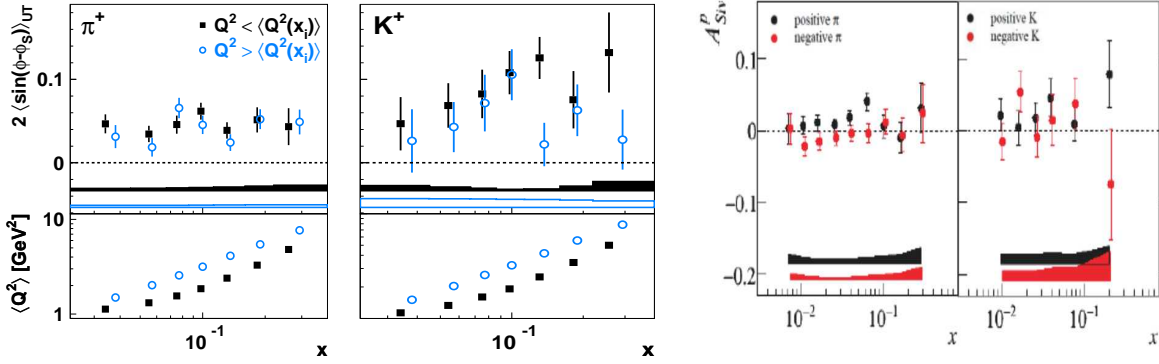


Figure 6: (Left) Sivers asymmetries measured for positive pions and kaons in two Q^2 ranges at HERMES [89]. The bottom panels show the average Q^2 values of the two ranges, which differ by a factor close to 2 in each x -bins. (Right) Sivers asymmetries measured for identified charged hadrons at COMPASS [87].

The Collins asymmetry $A_{UT}^{\sin(\phi+\phi_S)}$ has been measured to be non-zero and opposite in sign for opposite charge pions, see Fig. 2. A significant asymmetry was measured recently by Belle [90, 91, 92], indicating that the Collins function H_1^\perp is indeed large. The SIDIS result is an indication that favored and un-favored Collins fragmentation functions are opposite but of similar magnitude, an observation compatible with the measurements done at e^+e^- machines [90, 91, 92].

The extraction of the transversity from $A_{UT}^{\sin(\phi+\phi_S)}$ requires parameterizations for the unpolarized distribution and fragmentation functions along with approximations for the essentially unknown polarized T-odd chiral-odd Collins fragmentation function H_1^\perp . The Collins function for pions was calculated in a chiral invariant approach at a low scale [93]. It was shown that at large z the function rises much faster than previously predicted [94, 95] in the analysis using the HERMES data on target SSA. The first extraction of the transversity distribution, together with the Collins fragmentation function, has been carried out recently [96, 88] through a global fit of the BELLE data from e^+e^- annihilation and the HERMES [69] and COMPASS [70, 71, 97] data on semi-inclusive DIS, see Figs. 3-4.

The SSA for positive kaons is similar to that of positive pions in sign and magnitude, a result compatible with the dominance of the u -flavor in lepto-scattering over a proton target, see Fig. 2. However, at HERMES the signal for π^- and K^- are found to follow a different behavior, the former being large and negative, the latter being basically compatible with zero with a hint to be positive [84]. The result would be interesting since the K^- has no valence quarks in common with the target proton and sea quark transversity is expected to be small, thus K^- brings specific sensitivity on rank-2 Collins function. Note that the knowledge of the Collins function has an impact on the extraction of all the chirally-odd TMD parton distributions. The results

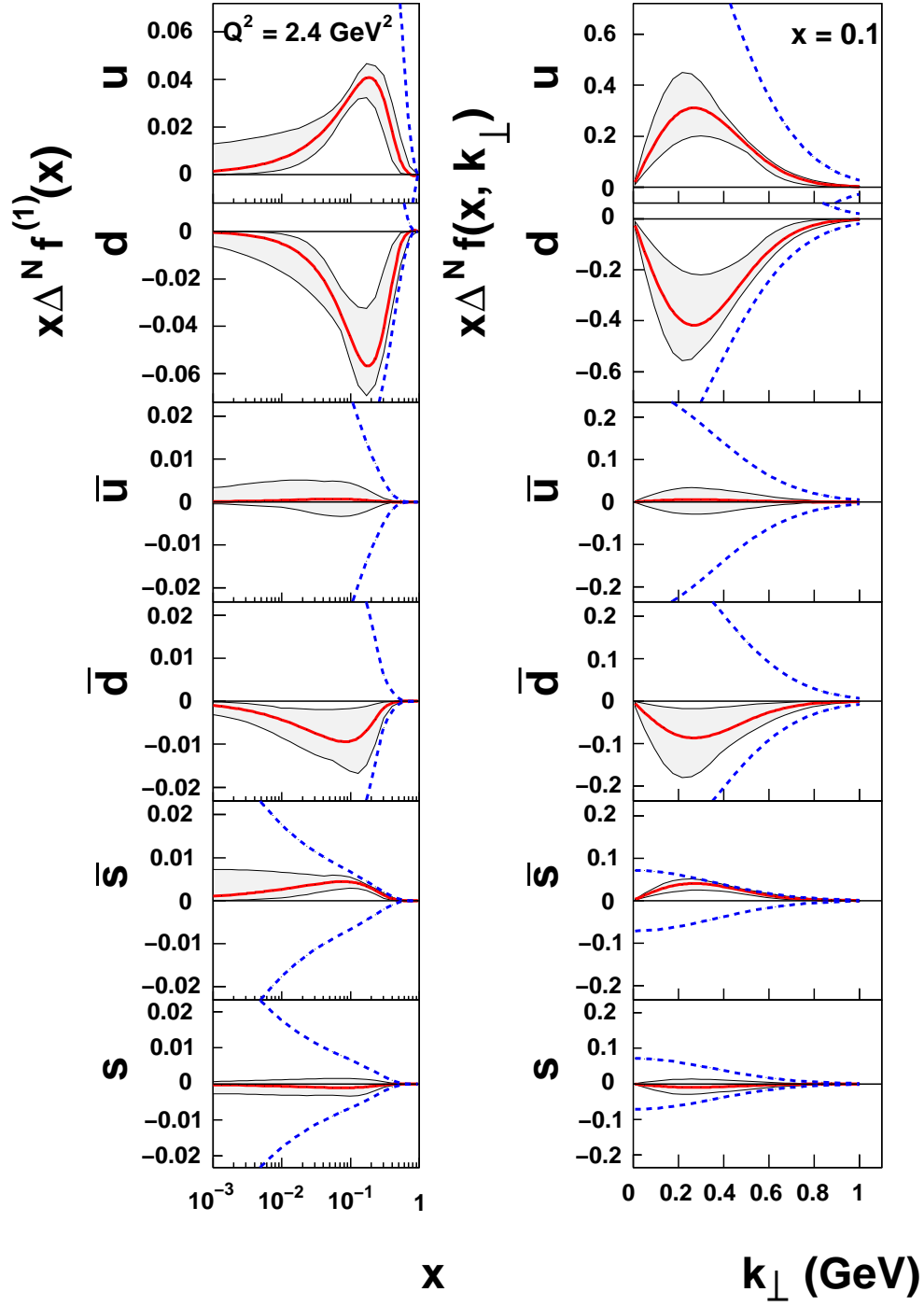


Figure 7: Sivers function for u , d , and s flavors as extracted in [39].

for K^- are still controversial, since COMPASS data [87] can not prove or disprove it, although seem to not support the HERMES hint, see Fig. 2. The issue can be solved only by novel high-precision experiments.

In SIDIS, substantial Sivers amplitudes $A_{UT}^{\sin(\phi-\phi_S)}$ were observed in positive hadron production. However, the measurements of HERMES [89] and COMPASS [85] experiments on a proton target are only marginally compatible: the asymmetries measured by COMPASS are somewhat smaller, and seem to indicate an unexpected dependence on W , the mass of the hadronic final state. Measurements of Sivers amplitudes at HERMES on proton target and COMPASS on (isoscalar) deuteron target are consistent with model calculations (Fig. 5) and lattice calculations indicating opposite signs for the Sivers functions for u and d quarks. The Sivers effect, proposed as a possible explanation of the SSA in hadron-hadron collisions, generates SSA in SIDIS reactions for positive kaons which are found larger than for positive pions, see Fig. 6. The difference concentrate at low- Q^2 , a possible indication of the presence of higher-twist effects in the kaon sector [89]. The results for negative kaons are not conclusive due to the limited statistics [87].

A recent extraction of the Sivers function for u , d , and s flavors, also based on the SIDIS results from HERMES and COMPASS, is shown in Fig. 7. The data available, however, is not enough to make statistically significant predictions in the valence region, where the effects are large.

2.5 The Impact of CLAS12 Measurements

The effects related to orbital motion of quarks, and in particular the correlations of spin and transverse momentum of the quarks, play an important role especially in the valence region. It was shown that spin-orbit correlations may lead to a significant contribution to partonic momentum and helicity distributions [98] in the large- x limit.

The goal of our proposed experiment is to gather a precise SIDIS data set in the region $0.1 \leq x \leq 0.6$, $0 \leq P_{h\perp} \leq 1.2$ GeV/c, and $0.3 \leq z \leq 0.7$. Global analysis of the data combining the measurements on proton and deuteron targets with identified hadrons in the final state will provide access to the flavor-decomposition of TMDs.

Significantly high-statistics CLAS12 data, especially in the intermediate-to-large x region, will enable the extraction of the x , z and $P_{h\perp}$ dependences for different azimuthal moments in a wide kinematic range, allowing the source of the observed SSA to be revealed, and the underlying distribution functions to be extracted. In particular, the combined analysis of the future CLAS12 data on A_{UT} and of the previous HERMES and COMPASS measurements in the small- x domain, will provide information on the Sivers function, shedding light on the correlations between transverse spin and transverse momenta of quarks, and on the transversity function, significantly constraining its first moment related to the nucleon tensor charge. Moreover CLAS12 data will provide access to the so-far unknown pretzelosity function h_{1T}^\perp , which is sensitive to the D-wave of the nucleon.

TMD	$\langle k_T \rangle$ in GeV	$\langle k_T^2 \rangle$ in GeV ²	$\frac{4\langle k_T \rangle^2}{\pi\langle k_T^2 \rangle}$	$\frac{\langle k_T^2 \rangle}{\langle k_{Tf_1}^2 \rangle}$
f_1	0.239	0.080	0.909	1.00
g_1	0.206	0.059	0.916	0.74
h_1	0.210	0.063	0.891	0.79
g_{1T}^\perp	0.373	0.176	1.007	2.20
h_{1L}^\perp	0.373	0.176	1.007	2.20
h_{1T}^\perp	0.190	0.050	0.919	0.63

Table 2: Predictions for the transverse momentum dependence of the T-even TMDs from the constituent quark model [51]. (Left) The mean transverse momenta and the mean square transverse momenta: if the transverse momenta in the TMDs were Gaussian, then the result for the ratio in the last row would be unity. (Right) Mean square transverse momenta of T-even TMDs in units of the mean square transverse momenta of f_1 , denoted as $\langle k_{Tf_1}^2 \rangle$. These ratios are considered to be a more robust model prediction.

SIDIS measurements with a joint use of a transversely polarized target and a longitudinally polarized beam provide access to the leading-twist TMD $g_{1T}^q(x)$. Significant A_{LT} double-spin asymmetries were predicted recently for the CLAS12 kinematics (see Fig. 8).

The width of the k_T distribution for different partonic distributions can be different. For example, values for different T-even TMDs, computed [65] in the constituent quark model [51], are listed in Table 2. Values normalized to the width of the unpolarized distribution function are listed in the same Table.

A common assumption is the Gaussian ansatz for the transverse momentum dependence of distribution and fragmentation functions with the average $P_{h\perp}$ of hadrons produced in SIDIS given by

$$\langle P_{h\perp}(z) \rangle = \frac{\sqrt{\pi}}{2} \sqrt{z^2 \langle k_T^2 \rangle + \langle p_T^2 \rangle}. \quad (8)$$

In the approximation of flavor and x or z -independent widths, a satisfactory description of HERMES deuteron data on average $P_{h\perp}$ [99] was obtained [100] with

$$\langle k_T^2 \rangle = 0.33 \text{ GeV}^2, \quad \langle p_T^2 \rangle = 0.16 \text{ GeV}^2. \quad (9)$$

Very similar results were obtained in Ref. [36] from a study of EMC data [101] on the Cahn effect. Although the ansatz seems to describe satisfactorily the present available data sets [64], it has to be considered as an approximation.

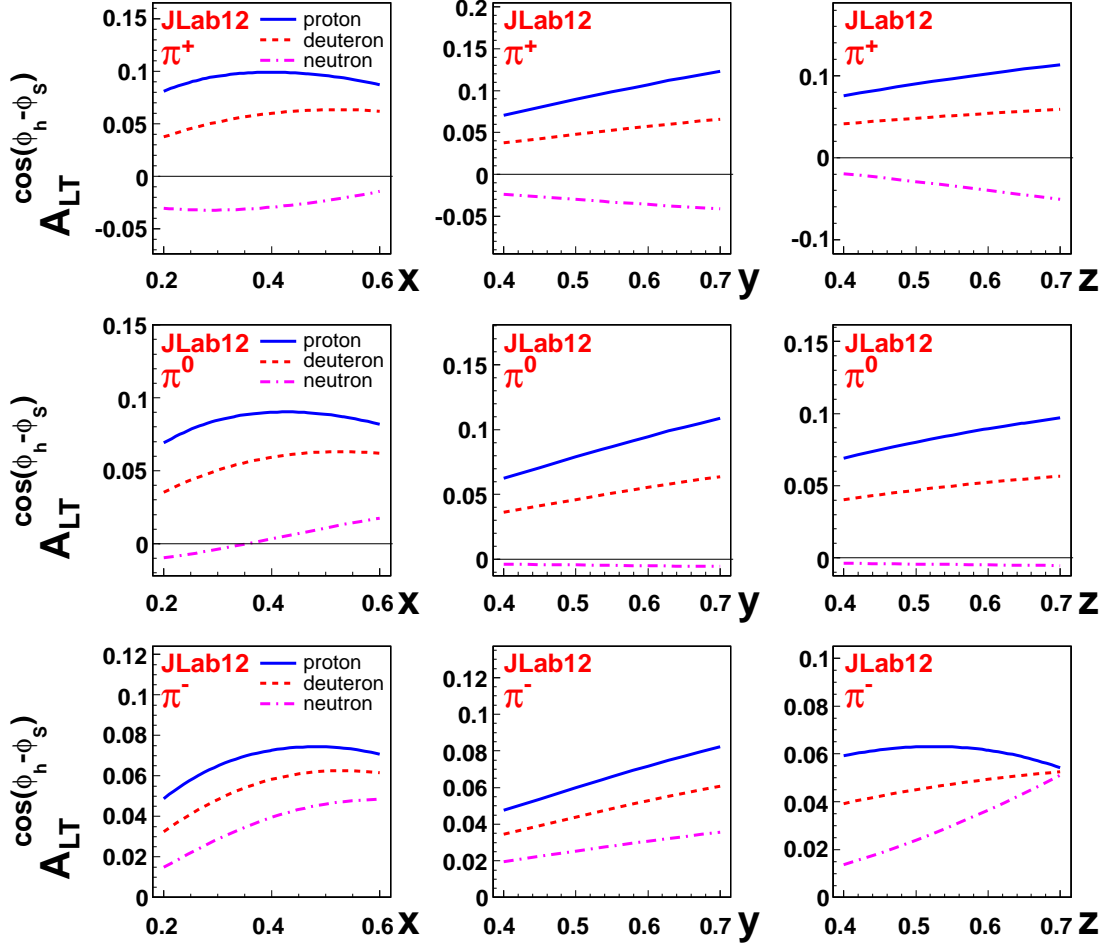


Figure 8: Predicted dependence of $A_{LT}^{\cos(\phi_h - \phi_s)}$ on x , y and z with $|\mathbf{P}_{T,min}| = 0.5$ GeV/c for CLAS12 kinematics.

The CLAS12 TTSA AUT measurements, in conjunction with the study of hadron multiplicities and unpolarized azimuthal modulations in a large range of kinematic variables (x , Q^2 , z , $P_{h\perp}$), will provide important input for the study of the transverse momentum dependence of all the TMDs.

A comprehensive study of the nucleon structure should consider the role of the quark flavor. The use of different targets in conjunction with the detection of various hadrons in the final state provide access to statistical information about the flavor of the struck quark. In particular, kaons provide enhanced sensitivity on strangeness in the matter (partonic sea of the nucleon) and in the vacuum (through fragmentation). Kaon detection is generally challenged by the about one order of magnitude larger flux of pions. Thus very little is known about the spin-orbit correlations related to the strange quark. Only recently dedicated measurements have become available and, despite the limited statistical accuracy, in most of the cases they show surprising results. This is an indication of a non trivial role of the sea quarks in the nucleon, or of a peculiar behavior of the fragmentation mechanism in the presence of strange quark. Moreover a hint exists that kaons provide enhanced sensitivity on higher-twist effects [89]. The interpretation would become possible only in the presence of high-luminosity large-acceptance experiments able to explore the relevant kinematic dependences in conjunction with an efficient hadron identification. Examples of wanted informations are a precise Q -dependence to isolate higher-twist effect and an extended $P_{h\perp}$ -dependence to map the transition between perturbative and non-perturbative regime.

Very little is known about polarization dependent fragmentation functions (i.e. Collins), but an effort is being pursued to extract them from the large sample of data collected at B-factories [102, 103]. Very precise information on the fragmentation process is anticipated in the next future thanks to the approval of Super B-factories. The detailed study can be completed only by SIDIS measurements, which constrain the fragmentation functions at much lower center-of-mass energy with specific flavor sensitivity (not accessible in e^+e^- reactions). The detailed knowledge of the fragmentation process would reflect on the precise determination of parton distributions only at experiments with enough statistical precision and flavor sensitivity, like CLAS12 with a RICH detector dedicated to hadron identification.

One of the main sources of uncertainties for pions is the fraction of pions coming from vector meson decays. Since the Collins asymmetry has a significant dependence on the type of a produced hadron, pions produced from rho decays will have very different moments compared to direct pions. The large acceptance of CLAS12 detector allows the simultaneous study of vector meson decays, substantially reducing the related source of systematics. Moreover, measurements with kaons, which have a much smaller contribution from vector meson production, can help in understanding the underlying dynamics of the part of measured asymmetries due to Collins fragmentation mechanism.

In summary, the measurements of single and double spin asymmetries for pions

and kaons in a large range of kinematic variables (x , Q^2 , z , $P_{h\perp}$) combined with measurements with unpolarized targets, will provide detailed information on the flavor and polarization dependence of the transverse momentum distributions of quarks in the valence region and, in particular, on the x and k_T dependence of the leading TMD parton distribution functions of u and d quarks. Such measurements would allow for detailed tests of QCD dynamics in the valence region, complementing the information obtained from inclusive DIS. They would also serve as novel tools for exploring nuclear structure in terms of the quark and gluon degrees of freedom.

The combination of all 3 target polarization states (U, L, T) opens access to study of single- and double-spin asymmetries, involving essentially unexplored chiral-odd and time-reversal odd distribution functions, providing detailed information on the quark transverse momentum and spin correlations [28, 3, 4, 29, 104]. The list includes transversity [1, 33], Sivers [72, 17, 18, 19], “pretzelosity” [4], worm-gear $g_{1T}^q(x)$ [105], and Collins [28] functions.

3 Experimental Situation

3.1 The Present Experiments

Target spin asymmetries have been published by the HERMES Collaboration on the proton [69, 89, 84] and the COMPASS collaboration on deuterium and proton targets [70, 85]. Kinematics at HERMES and in particular at COMPASS is limited to relatively low x , where the spin-orbit correlations are not expected to be large. In 2010 COMPASS got one additional year of data-taking with transversely polarized proton target. The foreseen gain in statistics is a factor three with respect the publication [85]. At JLab, an experiment has been done in Hall-A with transversely polarized ^3He target [106] and an experiment is foreseen to run in the fall of 2011 with transversely polarized HD-Ice target [107, 108].

3.2 JLab Proposals

At Jefferson Lab there are two closely-related proposals approved to measure SSA with a transversely polarized ^3He target in Hall-A [109, 110, 111]. The data from Hall-A experiments are complementary to those from the proposed CLAS12 measurement with transversely polarized hydrogen and deuterium targets.

The large acceptance of CLAS12 will allow measurements of SIDIS pions over a wide range in x , Q^2 and hadron transverse momenta, where the spin-orbit correlations and corresponding TTSA are expected to be significant. The crucial advantages of the proposed configuration using HD-Ice target is the large acceptance (no strong holding field is required) and the negligible nuclear background, in particular for large $P_{h\perp}$. Wide acceptance of the HD-Ice increases the kinematical coverage of measurements, in particular at large Q^2 , providing a wider range in Q^2 to control

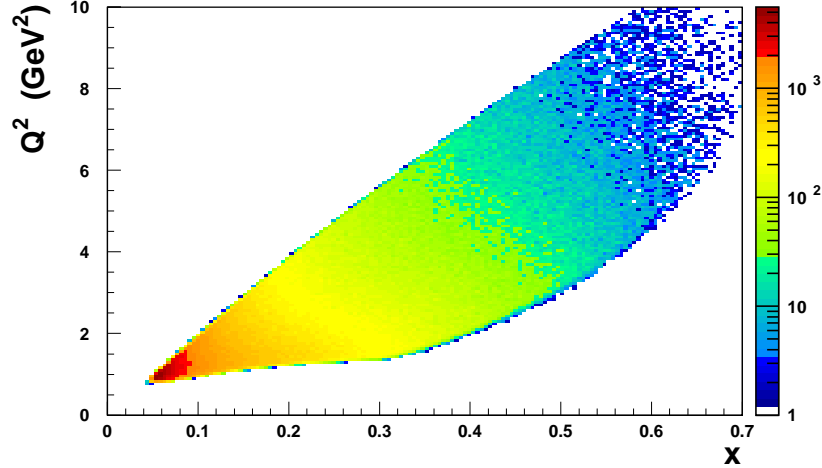


Figure 9: Kinematic coverage of CLAS12 with the transverse target.

possible higher twist contributions. With respect to nuclear targets (NH_3 , ND_3), HD-Ice dilution factor is a factor of 2 better at small $P_{h\perp}$ of hadrons, and goes up to a factor of 6 at $P_{h\perp} > 0.8$ GeV [112]. Good dilution factor at large $P_{h\perp}$ is crucial for studies of transverse momentum dependence of TMDs, which is one of the main goals of our proposal. The CLAS12 spectrometer equipped with a RICH detector, would allow a clean separation between pions, kaons and protons in a wide momentum range (1-10 GeV/c), thus providing flavor-tagging capabilities. In addition, wide acceptance and the capability to measure multi-particle final states will allow the simultaneous measurements of different exclusive vector mesons, important for understanding the background contributions to the Collins and Sivers asymmetries. Projected statistical errors for this proposal are shown in Section 4.5.

4 A Dedicated SIDIS Experiment with a Transversely Polarized Target and CLAS12

The main goal of the proposed experiment is to measure the x , Q^2 and $P_{h\perp}$ dependences of the target single- and double-spin asymmetries in the accessible kinematics (Fig. 9). The target single spin asymmetry (TSSA or A_{UT}) will be calculated as:

$$A_{UT} = \frac{1}{fP_t} \frac{(N^+ - N^-)}{(N^+ + N^-)}, \quad (10)$$

where P_t is the target polarization (with respect to the electron beam direction), f is the dilution factor, i.e. the fraction of events from the polarized material of interest (H or D), and $N^{+(-)}$ are the charge-normalized extracted number of $ep^\uparrow \rightarrow ehX$ events for opposite orientations of the transverse spin of the target.

The joint use of a transversely polarized target and a longitudinally polarized beam will also allow us to measure the double-spin asymmetry (TDSA or A_{LT}) in the same kinematic region. These quantities are directly sensitive to the model descriptions of the corresponding TMDs and will be measured as:

$$A_{LT} = \frac{1}{fP_B P_t} \frac{(N^{+\uparrow} + N^{-\downarrow}) - (N^{+\downarrow} + N^{-\uparrow})}{(N^{+\uparrow} + N^{-\downarrow}) + (N^{+\downarrow} + N^{-\uparrow})}, \quad (11)$$

where P_B is the electron beam polarization, and $N^{\pm\uparrow\downarrow}$ is the extracted number of ehX events for positive (+) or negative (−) helicities of the beam electrons and transverse (\uparrow, \downarrow) target polarizations.

The proposed experiment will provide statistically significant measurements of the kinematic dependences of the target TSSA and the TDSA in pion and kaon lepto-production in SIDIS in the valence region.

4.1 The CLAS12 Configuration

4.1.1 The HD-Ice Transversely Polarized Target

The magnetic holding fields accompanying transversely polarized targets can deflect the electron beam and create challenging background conditions. A magnetic chicane is typically installed upstream of the target and arranged in such a way that the target's magnetic field bends the electron beam back on axis [113]. However, bremsstrahlung created in the target material will be peaked along the direction of the incoming electrons, which will then be at several degrees to the detector axis depending on the holding field.

A transversely polarized target in a frozen-spin state, such as the HD-Ice target, requires only small holding fields, and greatly mitigates such background problems. Problems associated with beam deflection are virtually eliminated by the small holding fields and this potentially allows the target to be located even in the center of the detector, thus dramatically increasing the acceptance. In addition, the HD-Ice target has very limited dilution. The only unpolarizable nucleons are associated with the target cell and these can be sampled and subtracted in conventional empty-cell

measurements. At the same time, the low Z results in a long radiation length and comparatively few bremsstrahlung photons.

The HD-Ice target developed at LEGS in Brookhaven and now moved from BNL to JLab, has been used quite successfully in photon beam experiments at BNL. The factors affecting target polarization are complex and intertwined; a direct test of the performance of polarized HD with electrons is essential and already approved and scheduled during the 2011/2012 run period in Hall B.

At BNL, HD target polarizations of 60% H and 35% D were achieved in photons experiments with spin-relaxation times in excess of a year, and polarizations are expected to be higher (75% H and 40% D) with the smaller diameter cells used at JLab. The deuterium polarization is particularly stable; spin-relaxation times of 2 months have been measured with only 0.01 T (100 gauss) holding field and 0.2 K. The projected D-decay time for a 0.04 T saddle coil, 0.12 m in length ($\int BdL \approx 0.005$ T-m), is 7 months. Comparable H relaxation times require higher fields but should be possible with $\int BdL = 0.050$ T-m, which is still about 30 times less than a dynamically polarized ammonia target.

Beam heating is considerably less in HD, as compared to Butanol, due to the lower Z and, unlike Butanol, HD relaxation times are not such strong functions of temperature, so that long life-times are achievable up to about 0.7 K. Free radicals generated by electron bremsstrahlung will have randomly oriented polarizations. While their absolute number is small, they can generate polarization sinks within the target if the spin-diffusion time is short. This time constant has been indirectly measured at BNL by using RF to punch a local polarization hole within a highly polarized target. The rate at which this hole heals after the RF power is lowered reflects the in-diffusion of spin from other regions of the target. At 2 K, this measured spin-diffusion is 1 day for H but unmeasurably long for D (greater than a year). How much the H performance improves at lower temperatures is a matter for further study, but the extremely slow spin-diffusion for D already suggests that frozen-spin HD could maintain its deuterium polarization during electron experiments. The composition for a 10 cm solid HD-Ice target with 1.5 cm diameter is shown in the Table 3. Frozen-spin HD-Ice, thus, provides a very attractive alternative for electron experiments in particular with transversely polarized targets.

Table 3: HD-Ice target materials

Material	gm/cm ²	mass fraction (%)
HD	0.735	82%
Al	0.155	14%
C ₂ ClF ₃	0.065	4%

4.1.2 A Magnetic System for the CLAS12 Transverse Target

The baseline of CLAS12 detector is based on two superconducting magnets. The 5 T main solenoid of the central detector allows particle momentum determination in the backward region and constrains the large Moller background within the beam pipe. The large 2 T toroid magnet is used by the forward spectrometer as particle momentum analyzer.

The insertion of a transverse target in CLAS12 requires a volume where the longitudinal field of the main solenoid is shielded. In the shielded region a transverse target magnet can operate. In order to perform a preliminary feasibility study, a simplified main solenoid composed by a simple solenoidal coil was used. The dimensions of these coils are reported in Table 4.

To account for the possible sensitivity of HD-Ice to radiation damage, a luminosity of $10^{34} \text{ cm}^{-2}\text{s}^{-1}$, an order of magnitude lower than the one affordable with the CLAS12 detector, is here assumed. The Moller background is proportionally reduced and can be contained with a reduced solenoid field: ongoing MC studies show that a 3 T field would be enough.

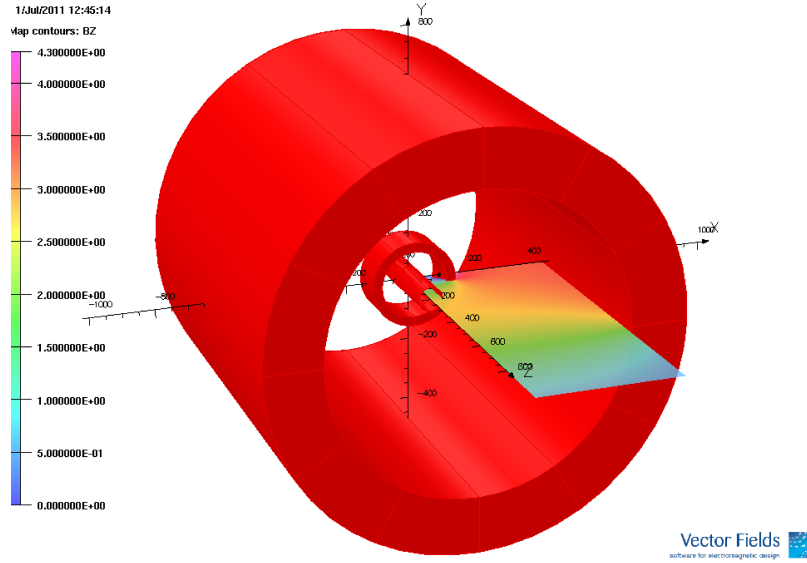


Figure 10: Magnet assembling for the HD-Ice target. Going outward from the beam line, there are the NMR coil of the target, the compensating solenoid and the central detector solenoid.

A magnetic configurations to shield the 3 T longitudinal field of the main solenoid in the target region has been studied. The HD-Ice target brings a thin superconducting solenoid for polarization measurement by NMR technique, able to provide a field of the order of 0.5 T. Larger fields are in principle achievable by winding

additional wire. However, in order to minimize the material budget inside the acceptance, a solution is adopted with an external solenoid inserted at the place of the silicon vertex detector barrel, see Fig. 10. The coil is designed to allow for a ± 60 degrees forward acceptance and to be contained within the micromegas barrel, see Fig. 11. This configuration provides enough clear solid angle to cover the forward spectrometer acceptance and part of the central detector which can then be used to detect recoiling protons in exclusive reactions (i.e. DVCS). The main parameters of the correction magnets are listed in Table 4. An ideal transverse magnet has been inserted in the magnetic assembly: it is a simple helical end (saddle) to supply 1 T transverse field in the target volume.

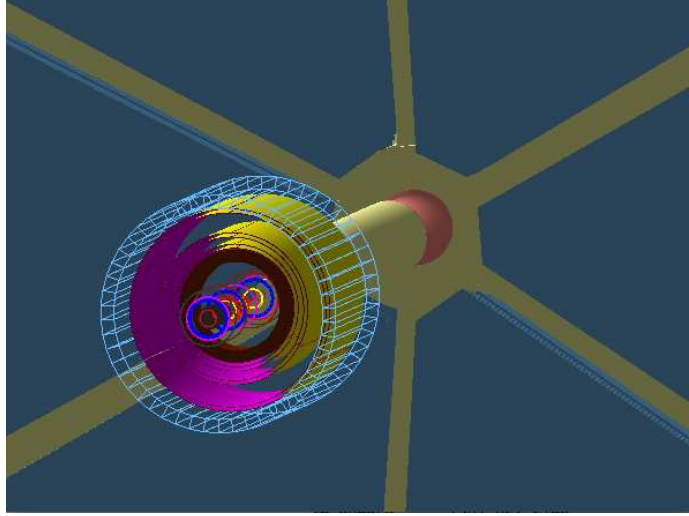


Figure 11: CLAS12 central tracking region with the transversely polarized HD-Ice target. Moving outward from the beam line, there are the HD-Ice target cryostat system (endcaps of various colors), the compensating solenoid (dark brown), the micromegas barrel (magenta-yellow layers) and the time-of-flight barrel (cyan). On the background the toroid magnet structure is visible, together with the first station of drift chambers.

The main parameters of the magnet configuration for the HD-Ice target are listed in Table 4. An important parameter is the uniformity of the transverse field holding the target polarization. The surviving longitudinal component of the field in the target volume is shown in Fig. 12. The compensating coil is designed to reduce the longitudinal field to a negligible level in the center of the target. Due to the geometry limitations by the acceptance requirement, the compensation is not complete at the edges of the target. The unwanted longitudinal component reaches values up to 0.3 T.

Experimentally the target transverse polarization is defined with respect the beam, whereas the component relevant to theory is the one transverse to the virtual photon. The angle between the beam and the virtual photon is approximately given by

$\sin \theta_{e\gamma^*} \approx \gamma \sqrt{1-y}$ with $\gamma = 2xM/Q$ and M the proton mass. As a consequence, the target spin actually has a longitudinal component (with respect the virtual photon), which can be as high as $\pm 15\%$. The influence on transverse analyses has been studied in detail at HERMES, and quantified as negligible. This fixes the order of magnitude of the longitudinal field component which can be tolerated into the target volume, similar to the one obtained with the present configuration and a transverse field of 1 T, see Fig. 12.

Table 4: Main parameters of the magnet assembling.

parameter	Central detector solenoid	compensating solenoid	NMR coil
inner radius (mm)	471	105	37.5
outer radius (mm)	650	135	38.5
length (mm)	1225	121	400
current density @ 3 T (A/mm ²)	18.2	148	400

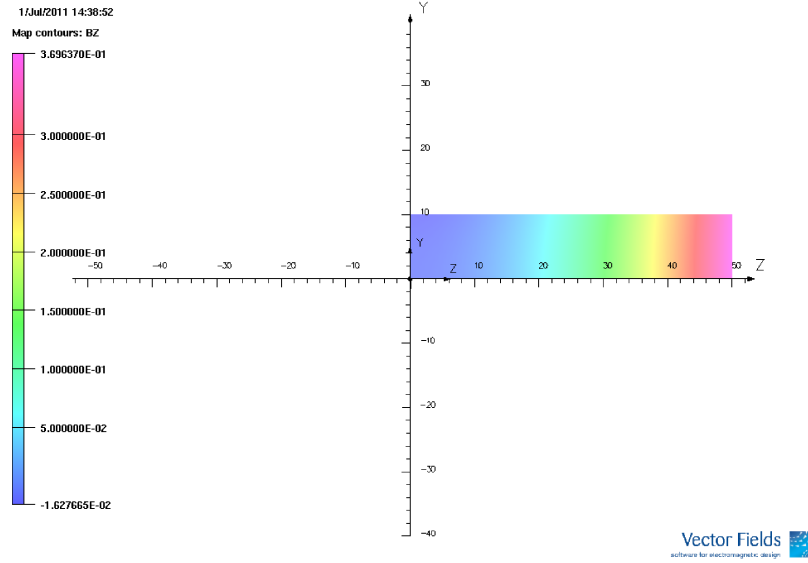


Figure 12: Longitudinal field component in the target volume (10 cm long cylinder of 1 cm radius). Due to symmetry, only the downstream half of the cell is mapped. The unwanted component surviving the compensation is negligible at the center of the cell, but reaches values up to 0.15 T (0.3 T) at the 5 cm (10 cm) edge.

The load line of the compensating solenoid are shown in Fig. 13, where different superconducting wire performances are reported:

NbTi SUPERCON 0.229 wire used in the CLAS12 target,

NbTi SUPERCON wire used by the PAX experiment at FZJ (VSF/SSCI)

NbTi BRUKER/EAS F54-(1.00)TV and OK54 wire by LUVATA/OUTOKUMPU

Nb3Sn SUPERCON wire is reported as well as a reference.

The working point at 148 A/mm^2 , corresponding to a 60-degrees acceptance, is well below the critical current of commercially available superconducting wires. From the magnetic point of view, the good safety margin gives freedom in future geometry optimization for i.e. a reduction of the material budget or a better compromise between field uniformity and acceptance.

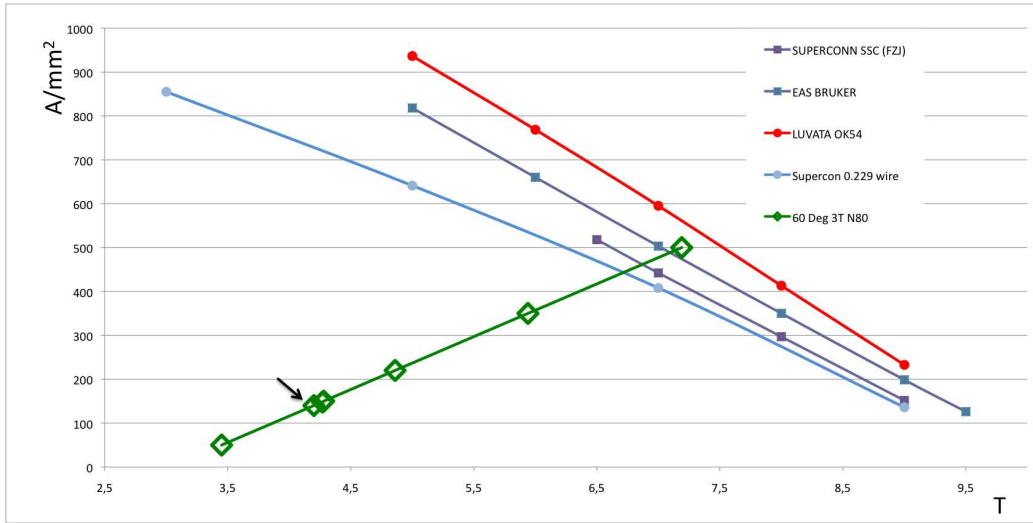


Figure 13: Load line of the compensating solenoid (open points) as compare to the critical current (close points) of the considered superconducting wires (see text). A realistic filling factor of 80% is considered for the superconducting coil wiring. The arrow indicates the working point for the 60-degrees acceptance solution.

In conclusion, a compensating solenoid in addition to the NMR coil of the HD-Ice target can be used to compensate the longitudinal field in the target volume. Both solenoids can be wound with existing standard commercial wires and work with a reasonable safety margin. The 60-degree-acceptance solenoid is a first-order trade off between the requirement of uniform transverse field in the target (which would require longer solenoids) and the acceptance for large angle protons in exclusive measurements (which would require shorter solenoids). Work is in progress to optimize the performances of the system.

To avoid radiation damage to the target the beam will be rastered over the target surface in a spiral pattern. The beam position is measured indirectly by recording the simultaneous currents of the raster magnet. These values can be used off-line to correct for effects of the raster on the vertex z-position. The raster magnets may be also used to give a small angle ($\sim 0.1^\circ$) to the incident electron beam, so that beam at target center will be collinear with the z-axis to confine bremsstrahlung photons into the beam pipe.

4.1.3 Target Polarization Measurements

There are four possible transverse combinations: (1) H and D both up, (2) H up/D down, (3) H down/D up, (4) H and D both down. Using the RF flipping of spins, one can switch between (1) and (4) or between (2) and (3) by simply rotating the field. The spins will follow, and this has 100% efficiency. Several samples with different orientations will be used in the experiment, allowing to effectively run transversely polarized Hydrogen and Deuterium targets at the same time.

The target polarization will be measured with an NMR system [114, 115, 116]. Polarimetry for nuclear targets has been studied extensively at BNL. The In-Beam-Cryostat that will hold HD targets within CLAS12 will have a short saddle coil wound on top of a long solenoid. The saddle coil will maintain transverse spin orientations. Keeping this coil short will both reduce the BdL deflection of electrons, as well as minimize spin diffusion from radiation damage (by changing the Larmor frequency across the target). However, the fields associated with this coil will be too non-uniform for NMR measurements. Instead, the solenoid will be used for NMR polarization monitoring. The target spins will readily follow the field as the solenoid is energized and the saddle coil is ramped down. NMR data will be collected at the fields matching the Larmor frequencies, typically 0.15 T for H and 0.9 T for D, after which the saddle coil will be ramped up and the solenoid ramped down. We anticipate a total cycle time of about 15 minutes (limited by how fast the fields can be changed without quenching the magnets), enabling NMR data to be collected several times a day. The systematic uncertainties in HD polarization are about 5% (relative). The largest single factor (contributing 2.8% relative) is the differential uncertainty on the gain of a lock-in amplifier whose scale must be changed by many orders of magnitude between equilibrium-polarization measurements and high-polarization frozen-spin measurements. Separation of signal and background in the calibration measurements contributes at the 1% level.

An additional estimate of the product of target and beam polarizations, $P_B P_t$, will be done also off-line by comparing the well known ep elastic asymmetry

$$A_{theo} = - \frac{\cos \theta_\gamma \sqrt{1 - \epsilon^2} + \left(\frac{Q^2}{4M^2}\right)^{-\frac{1}{2}} \sqrt{2\epsilon(1 - \epsilon)} \sin \theta_\gamma \cos \phi_\gamma \frac{G_E}{G_M}}{\epsilon \left(\frac{Q^2}{4M^2}\right)^{-1} \left(\frac{G_E}{G_M}\right)^2 + 1} \quad (12)$$

with the measured asymmetry

$$A_{meas} = \frac{N^+ - N^-}{N^+ + N^-} = \frac{P_B P_t \sigma_{et}}{\sigma_0} \equiv P_B P_t A_{theo}. \quad (13)$$

For the ratio $\frac{G_E}{G_M}$, we will use values from polarization transfer measurements [117], which are expected theoretically to have the same (small) two-photon corrections as A_{LT} measurements. On average, the uncertainty in A_{LT} due to G_E/G_M will be about 2% (relative). The measurements will consist of measuring both an electron and a proton, and imposing missing momentum and energy cuts to isolate the elastic channel. Events from H and D will be distinguished through a multi-parameter fit to the missing mass and energy distributions. Fermi broadening in the deuteron generates peaks that are typically twice as wide as for hydrogen, for the conditions of this proposal. Due to this mixing, the errors will be approximately 1.4 times bigger than for targets which contain only H or D plus heavy materials such as nitrogen or aluminum.

The beam polarization will be measured periodically with the standard Hall-B Moller polarimeter.

4.1.4 The Impact of Møller Scattering

One of the main sources of background produced by a high-energy electron beam impinging upon a HD target is due to interactions of the electron beam with the atomic electrons (Møller scattering). This rate is several orders of magnitude larger than the inelastic hadronic production rate. A dedicated Monte Carlo study aimed to evaluate the impact of the Møller scattering on the detector occupancies has been performed using the CLAS12 GEANT4 based MC (gemc). The CLAS12 response to a single SIDIS event in gemc is shown in Fig. 14. The effect of the target field on Møller electrons is shown in Fig. 15, indicating an efficient screen of the background is feasible also with the transverse target magnet configuration.

The HD-Ice in-beam cryostat will be modified to optimize the target magnet configuration to achieve maximum uniformity for acceptable occupancies in the CLAS12 DC using the CLAS12 GEANT-4 simulation. A reliable study will be possible only after the data-taking in fall 2011, when HD-Ice will be for the first time exposed to the CEBAF electron beam.

4.2 The CLAS12 Particle Identification

The proposed experiment will use the upgraded CLAS12 spectrometer with the low threshold Cherenkov counter replaced by a RICH detector.

In the baseline design of CLAS12, particle identification (PID) in the forward detector is obtained by using the high threshold Cerenkov counter (HTCC), the low threshold Cerenkov counter (LTCC) and the Time-of-flight scintillator arrays (TOF)

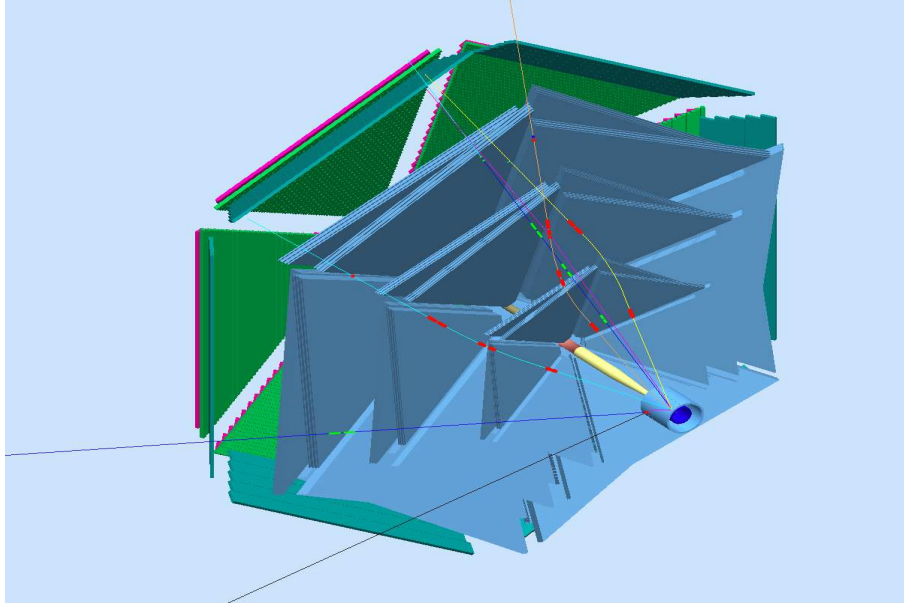


Figure 14: A single SIDIS event in CLAS12 from gemc.

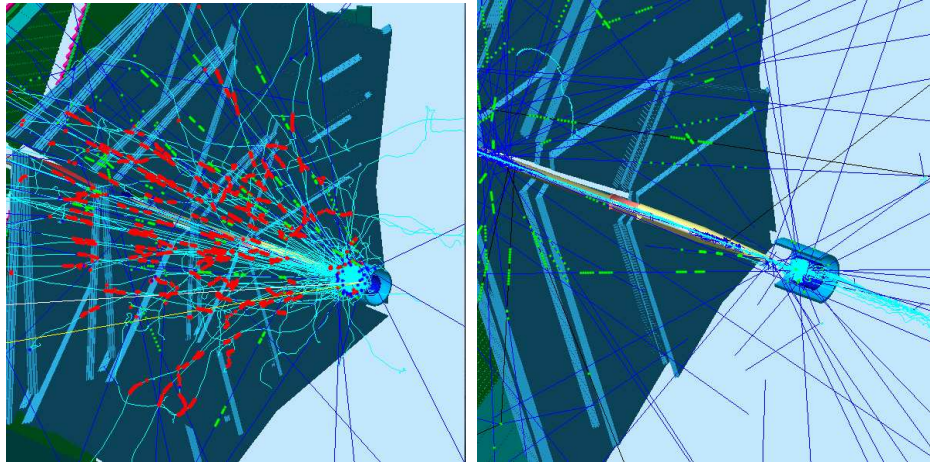


Figure 15: Comparison of the CLAS12 response without (left) and with (right) the target transverse field with the compensation coil. The blue lines are photons, the cyan are electrons.

(see Fig. 16). In the $\sim 2.5 - 5 \text{ GeV}/c$ momentum region, the π/K separation relies only on the LTCC performance. Moreover, in the $4.7 - 8 \text{ GeV}/c$ momentum region it is not possible to separate protons from kaons. In general, this PID system matches the requirements of the physics program at 12 GeV. However there are some physics reactions of high interest, such as the one covered by this proposal, that cannot be accessed without a better PID, especially for charged kaon detection. At 12 GeV for semi-inclusive processes, the K/π ratio is of the order of $10 - 15\%$ thus the required rejection factor for pions is around $1 : 1000$ (corresponding to 4.7σ pion-kaon separation) while with the present configuration, assuming a realistic pion detection inefficiency for the LTCC of 10% , the π/K contamination is $1 : 1$. A RICH detector, to be installed in place of the low threshold Cerenkov counter, will significantly improve the CLAS12 particle identification overcoming the above limitations without having any impact on the baseline design of CLAS12.

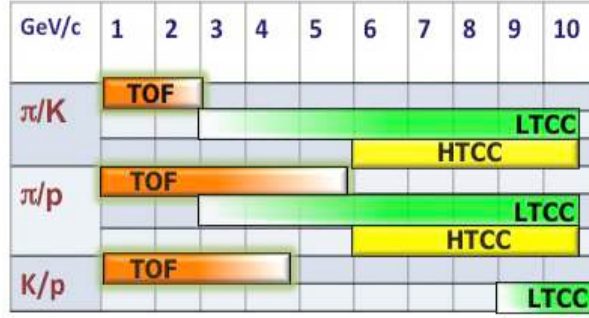


Figure 16: Hadron particle identification in CLAS12.

4.3 The CLAS12 RICH detector

To fit the CLAS12 geometry, the RICH should have a projective geometry with six sectors matching the torus bores and covering scattering angles from 3° to 30° (see Fig. 17). Being downstream to the torus magnet at more than 5 m from the interaction point, the RICH has to cover a large surface, each sector having an area of the order of 4 m^2 in the front and 8 m^2 in the back. The RICH total thickness cannot exceed 1 m, being the detector constrained between existing equipments. The proposed solution is based on the concept of the proximity focusing RICH, with a mirror system mainly devoted to reduce the photon detector area. In the momentum range of interest an aerogel RICH represents the best solution for the identification of $\pi/K/p$ as shown in Fig. 18. This implies detecting Cherenkov light in the visible wavelength range and using photomultipliers (PMTs) as photon detectors. Ongoing Monte Carlo studies (see next section) show that a pion-kaon separation greater than 4σ at $8 \text{ GeV}/c$

momentum can be achieved if the detector pad size is less than $1 \times 1 \text{ cm}^2$, thus the use of Multi-Anode PMTs is mandatory.

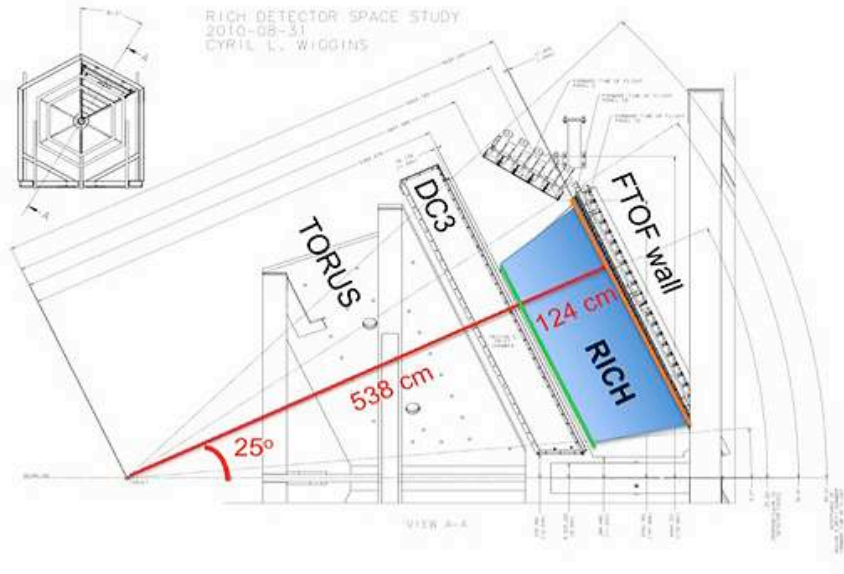


Figure 17: RICH detector space and position in the CLAS12 spectrometer.

The use of aerogel as radiator and the detection of light in the visible wavelength range is an expensive solution. Work is in progress to limit the area of the photon detector to about 1 m^2 per sector. Studies of the spatial distributions of the Cherenkov photons impact point at the detection surface show that high-momentum particles concentrate in a limited forward region close to the beam line (see Fig. 19).

The approach is, thus, to instrument a limited area around the beam line to have direct detection in the forward region at high momenta, while at large angles and lower momenta a system of focusing mirrors catches the light and focalize it onto the photon detector. A drawing of the proposed solution is illustrated in Fig. 20, where the main components of the systems are shown: the planar mirror (positioned before the radiator), the aerogel radiator, the proximity gap, the PMTs plane covering the angular region between 3° and 14° , and the elliptical mirror which reflects the light produced by the particles emitted at angles larger than 14° towards the planar mirror.

4.3.1 Preliminary Monte Carlo results

Preliminary Monte Carlo studies based on GEANT4 with a realistic geometry of the CLAS12 detector and events generated with Pythia have been performed with the aim to optimize all the components of the detector. The dimensions of the radiator

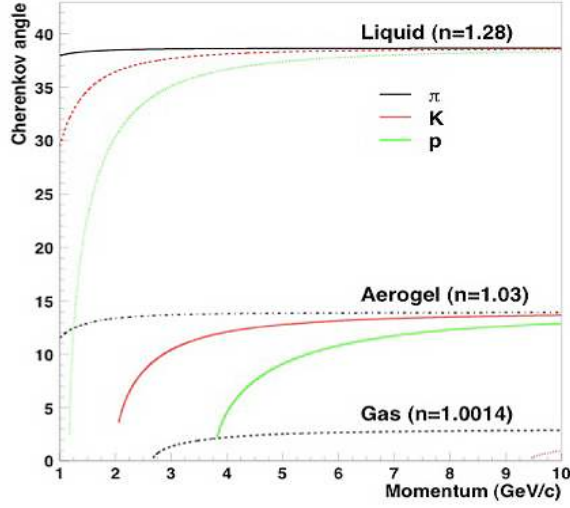


Figure 18: Cherenkov angle versus particle momenta for π , k , p and different radiators.

thickness and the gap length as well as the pad/pixel size of the photon detector have been varied in order to find the optimal combination which gives the smallest reconstruction error in the Cerenkov angle and the highest number of photoelectrons. An average number of 10 and 5 photoelectrons per ring has been obtained for the direct and reflected light collection, respectively. An example of simulated events in the proposed RICH geometry is shown in Fig. 21, where both direct and reflected Cherenkov photons are detected by the PMTs.

In order to have a precise information about the RICH performances in terms of pion/kaon separation, a pattern recognition algorithm based on the event-wise Direct Ray Tracing (DRT) technique has been implemented. DRT combines the track(s) information with all feasible hypotheses on the tracking particle(s) and realistically estimates, for each hypothesis, the produced photon hits patterns, which are compared to the simulated/measured one by means of a likelihood function. The most probable particle(s) hypothesis is assumed as the true one. The results, obtained using the RICH configuration shown in Fig. 20 with aerogel of increasing thickness from 2 to 6 cm, a gap length of ~ 100 cm and a pad size of 0.6 cm and for particle momenta in the range 7-9 GeV/c , are shown in Fig. 22. In the figure the likelihood for the different particles hypothesis is shown. As it can be seen, the contamination is widely smaller than 1%. For instance, the probability that a pion is misidentified as a kaon is 0.18%, which corresponds to approximatively a 4-5 σ pion/kaon separation.

The preliminary results of the ongoing Monte Carlo analysis are encouraging about the performances of the proposed RICH. Several potential improvements have been already identified and are under detailed investigation. Also tests in realistic conditions of the proposed solution with a small prototype are underway.

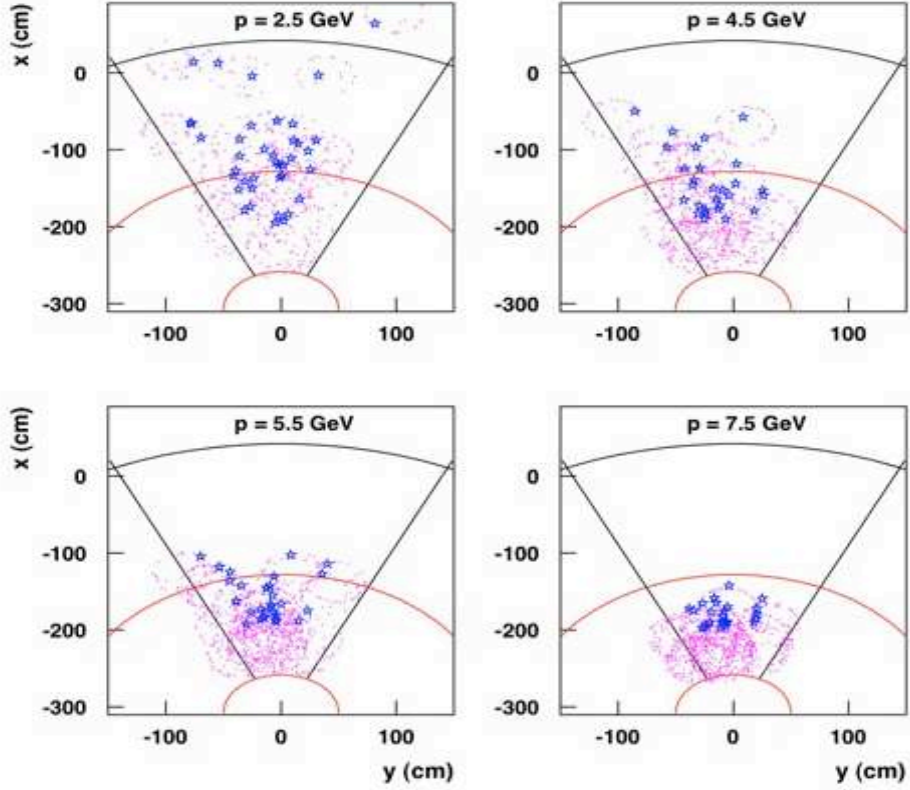


Figure 19: Spatial distributions of the particle impact point at the RICH entrance (stars) and gamma impact point at the detector surface (dots) for few overlapped events. The plots distinguish among particle of increasing average momentum, from $2.5 \text{ GeV}/c$ up to $7.5 \text{ GeV}/c$, from top to bottom and left to right. High-momentum particles concentrate in a limited forward region close to the beam line, arbitrarily delimited by the two dashed lines just for an illustration porpouse.

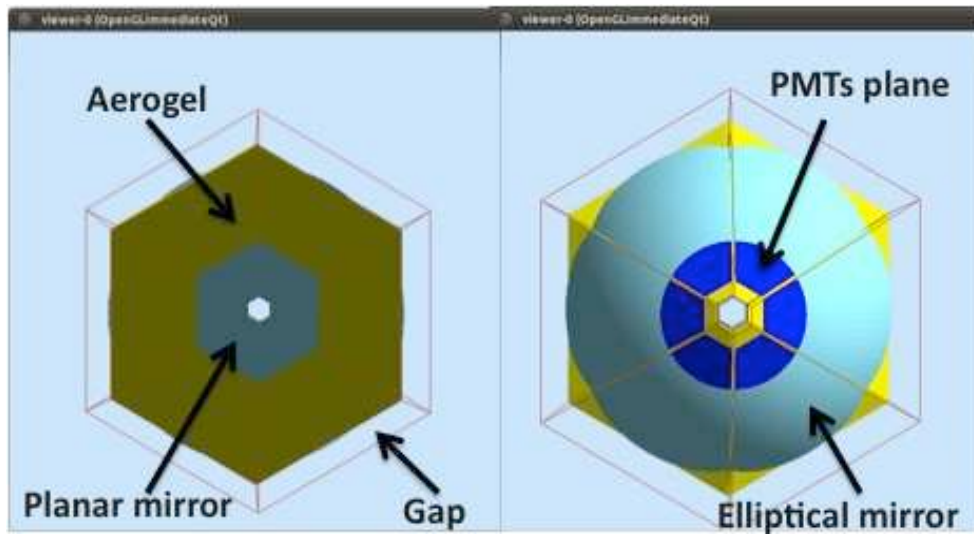


Figure 20: Drawing of the proposed proximity focusing RICH with focusing mirrors.

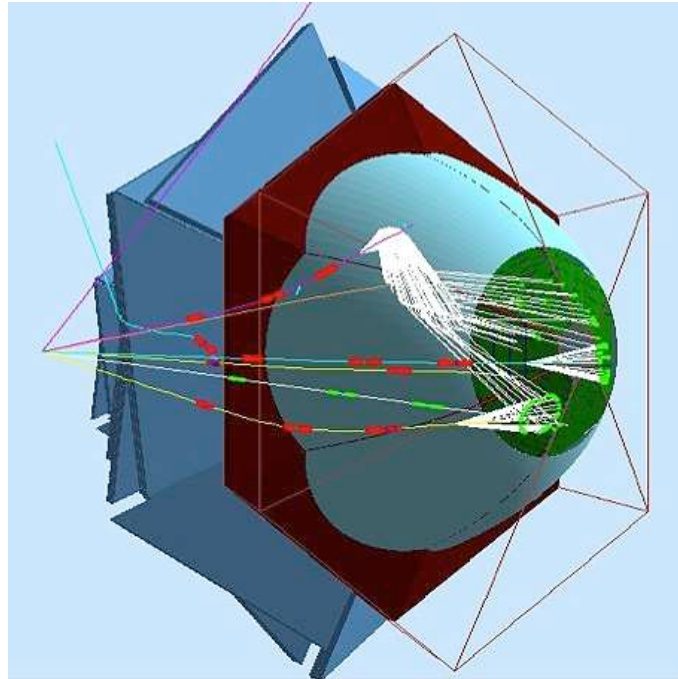


Figure 21: Example of events simulated with GEANT4

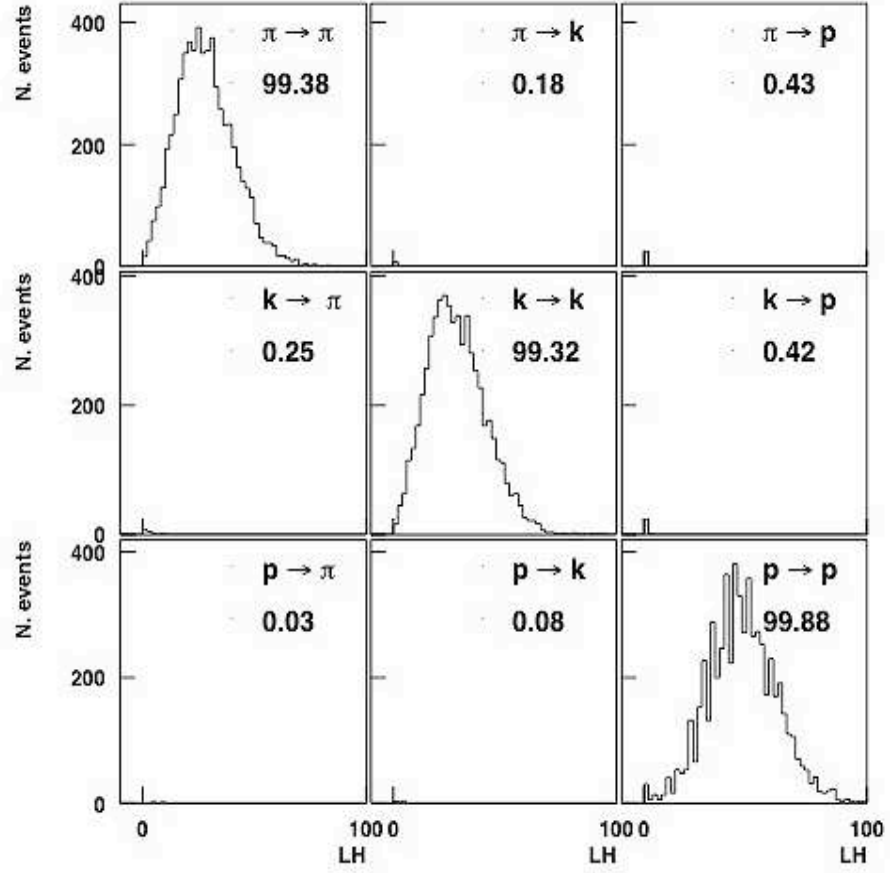


Figure 22: Likelihood distribution for the different particles hypothesis.

4.4 The Measurement

4.4.1 Event Identification, Reconstruction, and Acceptances

Final-state hadrons and the scattered electron will be detected by the CLAS12 spectrometer. Electrons are separated from heavier particles using Cherenkov counters and electromagnetic calorimeters. Pions will be identified using Cherenkov counters and measurement of time of flight. The use of the CLAS12 RICH detector would ensure pion/kaon separation in a wide momentum range (up to approximately $8 \text{ GeV}/c$). Pion and kaon momenta will be reconstructed in the CLAS12 drift chamber system, embedded within the toroidal magnetic field. For the proposed experiment, gammas from π^0 decays (or from η decays) will be reconstructed using the forward angle electromagnetic calorimeter (FC) and the new preshower calorimeter (PCAL). Kinematic distributions of electrons and final state hadrons are shown in Fig. 23 and Fig. 24.

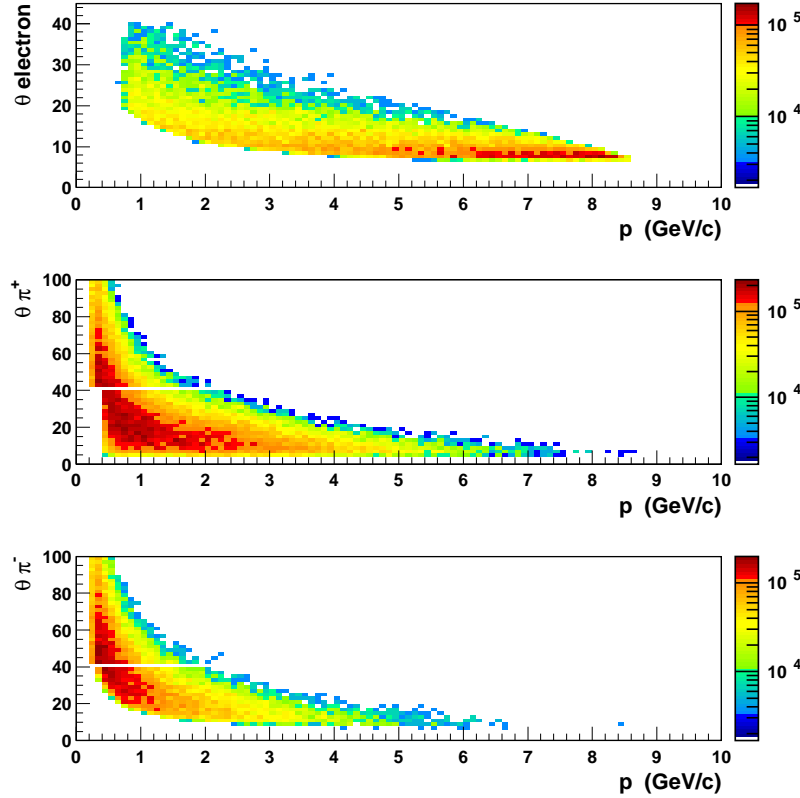


Figure 23: Kinematic distributions of electrons and final state hadrons.

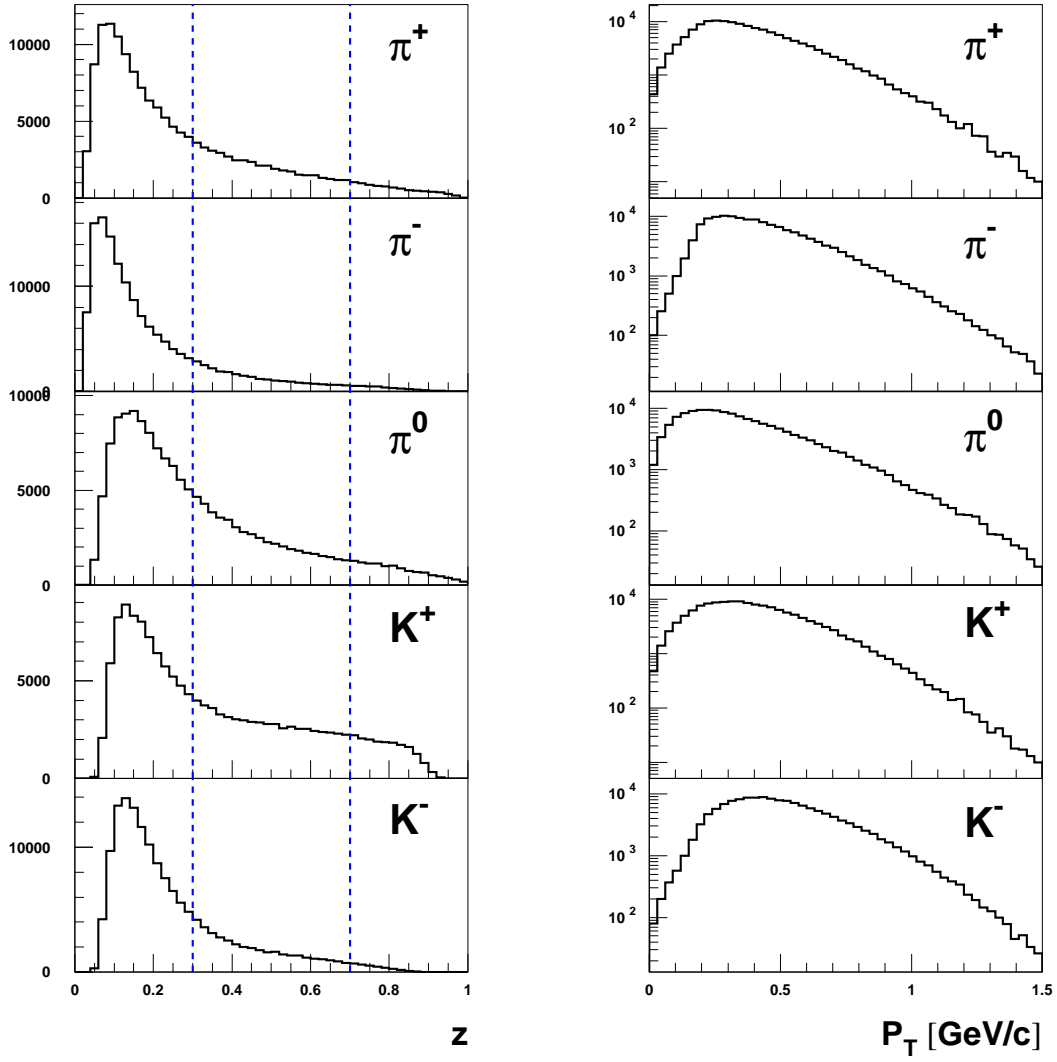


Figure 24: Typical kinematic distributions of CLAS12 SIDIS hadrons with transverse target. The dashed lines define the z region selected for SIDIS.

Fig. 25 shows the correlation of relevant kinematic variables with the scattering angle. Electron detection at large angles (larger than 20 degrees) is mandatory to explore the large Q^2 regime, whereas hadron identification is required in the middle angle range (15-20 degrees) to reach large $P_{h\perp}$ values. The CLAS12 forward detector is perfectly suitable for such measurements since designed to cover up to 40 degrees angles.

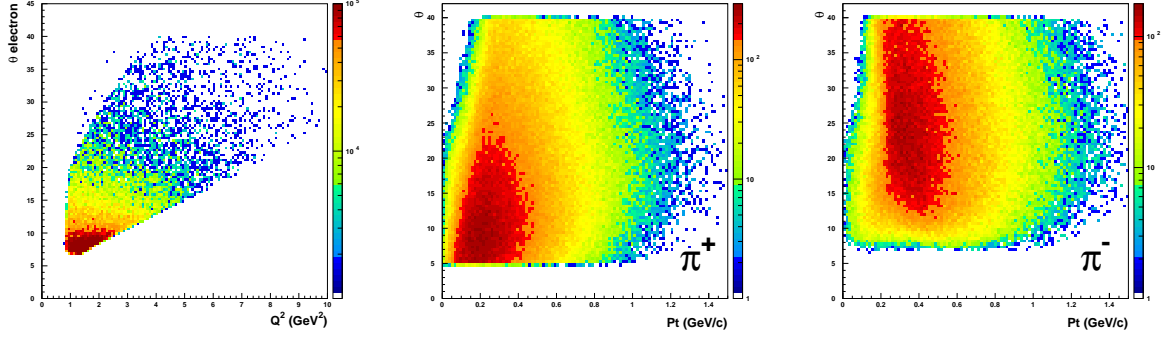


Figure 25: Kinematic coverage of CLAS12 SIDIS hadrons with transverse target.

4.4.2 Acceptance and Data Analysis

Although SSAs are typically not too sensitive to acceptance corrections, in the case of the transverse target, due to the large number of contributions appearing as different azimuthal moments in the cross section, the acceptance corrections are more important. The analysis of the transverse target requires fits in the 2-dimensional space of the relevant azimuthal angles ϕ and ϕ_S . A detailed procedure on the accounting for acceptance corrections in the separation of the different azimuthal moments was developed by the HERMES collaboration. According to this method, a fully-differential (thus free from acceptance effects) parametrization of the asymmetries is extracted from the data itself with a fully-unbinned maximum likelihood fit. The parameterization is then used in input to a Monte Carlo simulation which accounts for a complete model of the instrumental effects (acceptance, smearing, inefficiencies...) to generate a pseudo-data sample. The systematics effects are evaluated as the difference of the asymmetries extracted from the pseudo-data sample and the parameterization in input to the Monte Carlo. A similar procedure has been applied to estimate the expected acceptance corrections for e.g. the Sivers and Collins asymmetries as extracted in the CLAS12 acceptance.

4.4.3 Count Rates and Statistical Errors

With the proposed configuration as described in Section 4.1, a luminosity of $10^{34} \text{ cm}^{-2}\text{s}^{-1}$ is expected. The yields of SIDIS pions and kaons are estimated using a Monte Carlo simulation of the acceptance and smearing of the detector, based on the PYTHIA generator tuned to the multiplicities measured at the HERMES experiment. The statistics of the proposed experiment is calculated for 80 days of data-taking (i.e. for the total requested beam time, 100 days, diminished by a 20% duty-factor accounting for calibration runs, empty target runs, and supportive tests). The expected number of SIDIS pions and kaons within the kinematic limits: $Q^2 > 1 \text{ GeV}^2$ (corresponding to $x > 0.05$), $W^2 > 4 \text{ GeV}^2$, $0.10 < y < 0.85$ and $0.3 < z < 0.7$ are: 27.5 M, 9.1 M and 7.8 M for π^+ , π^- , and π^0 , respectively, and 2.9 M and 0.6 M for K^+ and K^- , respectively. A squared missing mass greater than 2 GeV^2 was required to suppress the contamination from exclusive channels. The π^0 yields were obtained selecting the range $0.097 < m_{\gamma\gamma} < 0.179 \text{ GeV}/c^2$ of the 2γ invariant mass spectrum, corresponding to $\pm 2\sigma$ from the mean value ($\langle m_{\gamma\gamma} \rangle = 0.138 \text{ GeV}/c^2$).

The hydrogen target polarization is assumed to be 75%, whereas a beam polarization of 85% is predicted. The dilution factor for the hydrogen target is of the order of 1/3. For simultaneous data-taking, the foreseen deuterium polarization is 25 % with a dilution of 2/3. All the above factors have been taken into account when calculating the statistical uncertainties on the asymmetries (see Section 4.5). The number of days was chosen to achieve a statistical error that is not significantly larger than the systematical error at the highest x and $P_{h\perp}$ points.

4.4.4 Systematic Errors

The systematic uncertainties can be divided into two categories: those that scale with the measured asymmetry and those that are independent of the measured results. In the first category, the dominant uncertainty is expected to be that from the target polarization and the dilution from the target material other than HD, see Table 3. For the second category, we have taken our best estimate of the magnitude of the systematic effect, and divided by the average expected proton asymmetry.

One of the main contributions to the estimated relative uncertainties, summarized in Table 5, comes from the procedure used to separate the azimuthal moments of interest from other, potentially non-zero, azimuthal asymmetries (for example a twist-3 $\sin(\phi_S)$ moment). Another large contribution is from possible contamination of the SIDIS pion event sample by pions from decays of diffractive vector mesons, mainly ρ^0 (the contamination for kaons is expected to be much smaller). Thanks to the large acceptance of CLAS12, the asymmetries from background processes, such as ρ^0 production, will be measured simultaneously and can thus be corrected for, as the size of the contamination can be measured as well. Based on our previous studies for the EG1, e1f and e16 experiments, the uncertainty from radiative corrections will be a minor contribution.

We conservatively estimate the average total relative systematic error on the proton SSAs to be of order 9%, sufficiently small for a very significant measurement.

Error source	Systematic error (%)
H/D background	4
Target polarization P_T	5
acceptance corrections	4
Al background contribution	3
ρ^0 contamination	3
Radiative corrections	2
Total	~ 9

Table 5: Estimated contributions to the relative systematic uncertainty on the proton TTSA's in SIDIS.

4.5 Projected Results

The projected CLAS12 statistical precision on the TTSA's A_{UT} asymmetries for pions and charged kaons on a proton target, corresponding to 80 days of data-taking with the HD-Ice target, are shown in Figs. 26-29. For deuterium, the errors should be inflated by a factor of 1.5, taking into account its smaller polarization is compensated by the greater dilution factor. The kinematic region considered for these projections is the following: $Q^2 > 1 \text{ GeV}^2$ (corresponding to $x > 0.05$), $W^2 > 4 \text{ GeV}^2$, $0.10 < y < 0.85$ and $0.3 < z < 0.7$. A squared missing mass greater than 2 GeV^2 was also required. In particular, the π^0 yields were obtained selecting the range $0.097 < m_{\gamma\gamma} < 0.179 \text{ GeV}/c^2$ of the 2γ invariant mass spectrum, corresponding to $\pm 2\sigma$ from the mean value ($\langle m_{\gamma\gamma} \rangle = 0.138 \text{ GeV}/c^2$). The projected results were obtained from a Monte Carlo simulation including a description of the CLAS12 geometry as well as detector acceptance and smearing effects. QED radiative effects were neglected since known, from previous studies, to be small. Here, a target polarization of 75% and a dilution factor of 1/3 were assumed.

In most of the cases the CLAS12 error bars (statistical uncertainties) are not visible since they are smaller than the dots symbols. The comparison between the projected results for CLAS12 and the HERMES results (Fig. 26-27) shows the remarkable improvement expected for CLAS12 in terms of statistical precision and kinematic coverage, especially in the valence region (intermediate-to-high x).

In Figs. 30-31, projected results are shown as a function of x for 2-dimensional extractions of the Sivers amplitudes in bins of $P_{h\perp}$ and z , respectively. The Sivers effects was implemented in the Monte Carlo generator using a fully-differential parametrization tuned to HERMES data and evaluated event-by-event at the CLAS12 kinematics. The projected results show sizable Sivers amplitudes for π^+ and π^0 . However, the magnitude of the projected amplitudes for CLAS12 is purely indicative, as it results from an extrapolation of the HERMES parametrization into the CLAS12 kinematic region.

The measurement of the transverse asymmetry from the Sivers effect with π^0 on both hydrogen and deuterium targets, will allow a model-independent flavor decomposition of the Sivers function (u and d flavor contributions) in the large- x region, where the sea contribution is not significant. Furthermore, measurements of amplitudes for identified pions and kaons will provide precious information not only on the contribution to the distribution functions involved from the various quark flavors (e.g., it would allow for constraints on the contribution from the strange sea quarks), but also on the ratio of favored to unfavored polarized fragmentation functions, complementary to e^+e^- data.

Thanks to the high statistics achievable in 80 days of measurements, a 4-dimensional analysis of the extracted azimuthal moments can be performed. This allows the disentanglement of all the specific kinematic dependences and a deeper inspection of the mechanisms generating the asymmetries. For example, the Q^2 dependence can constrain the higher-twist contributions, whereas the $P_{h\perp}$ dependence links to the

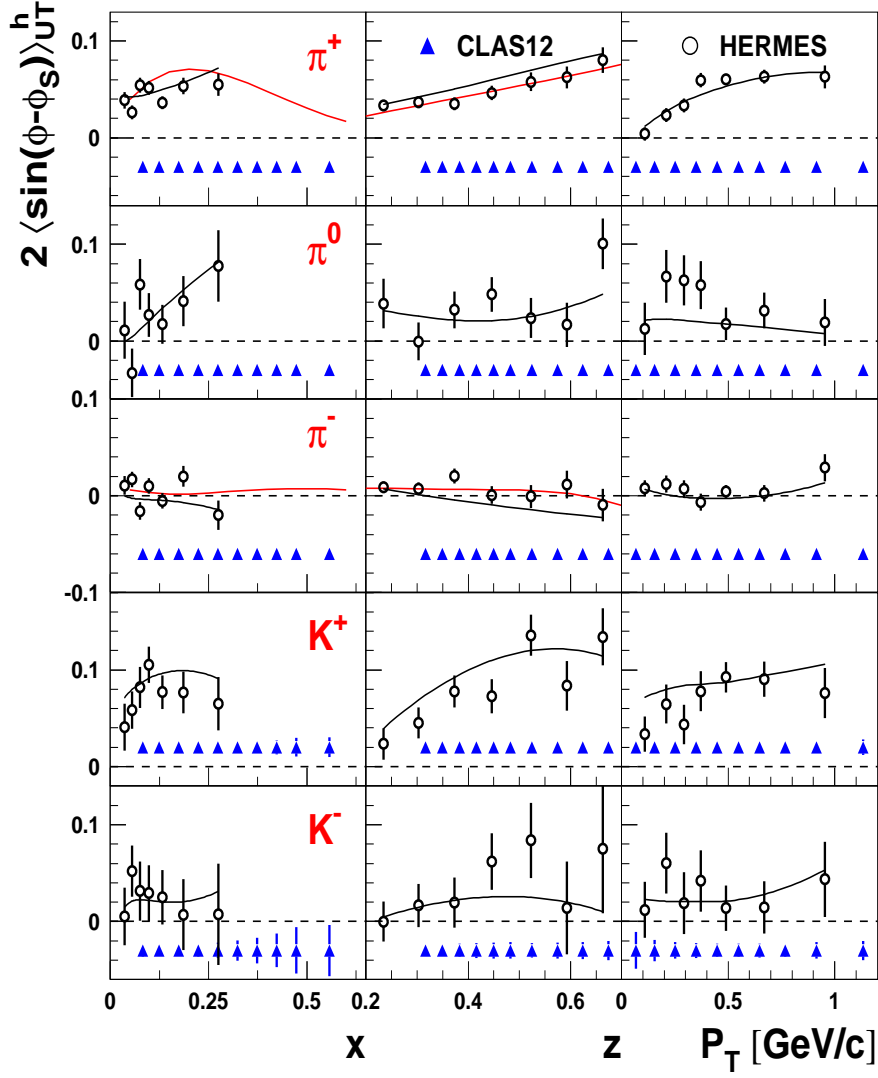


Figure 26: Expected statistical uncertainty for the Sivers amplitudes as a function of x , z and $P_{h\perp}$. Overlaid are also shown the corresponding HERMES results. The curves shows the predictions from a 4D parameterization extracted from the HERMES data (black line) and a phenomenological model (red line).

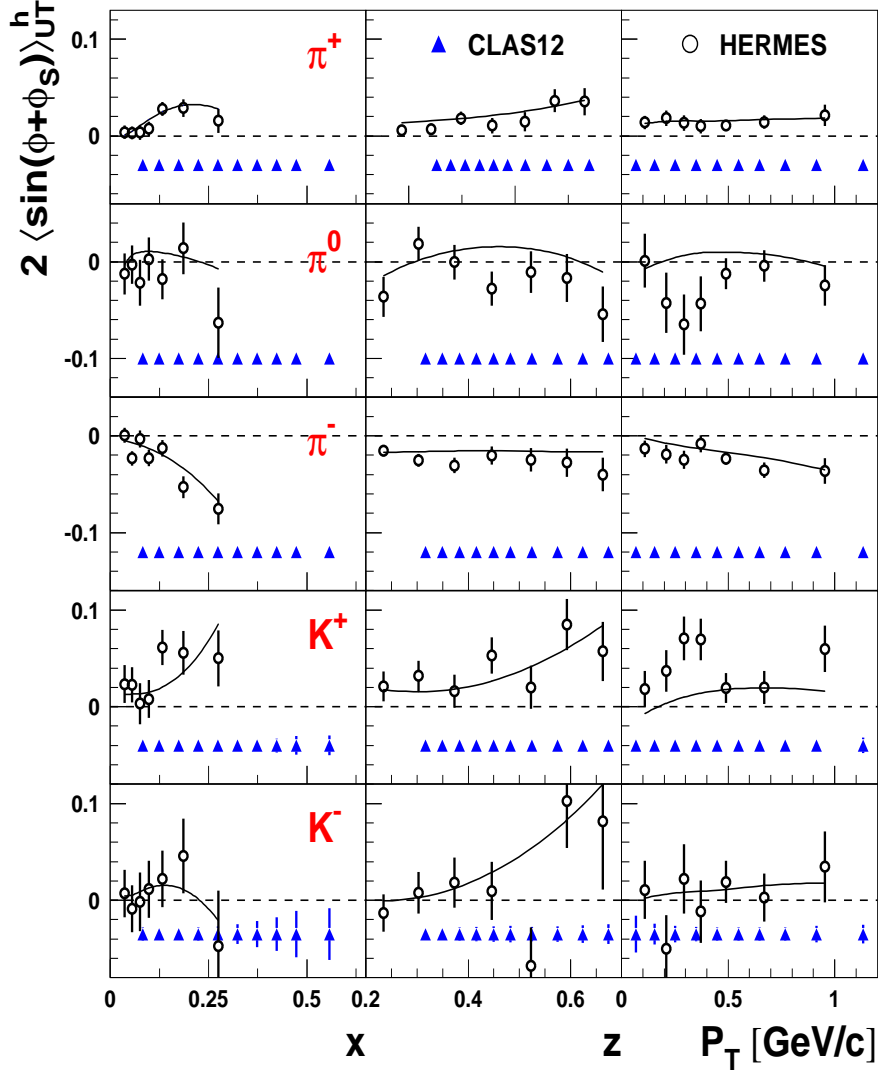


Figure 27: Expected statistical uncertainty for the Collins amplitudes as a function of x , z and $P_{h\perp}$. Overlaid are also shown the corresponding HERMES results. The curves show the predictions from a 4D parameterization extracted from the HERMES data.

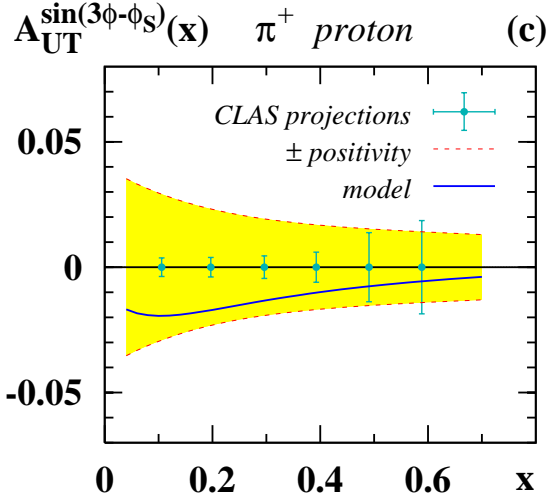


Figure 28: The $A_{UT}^{\sin(3\phi-\phi_S)}$ asymmetry in π^+ electro-production from proton target in the kinematics of CLAS12 as function of x [59]. Solid curve presents the prediction of relativistic covariant model [118]. The shaded area is the region allowed by positivity.

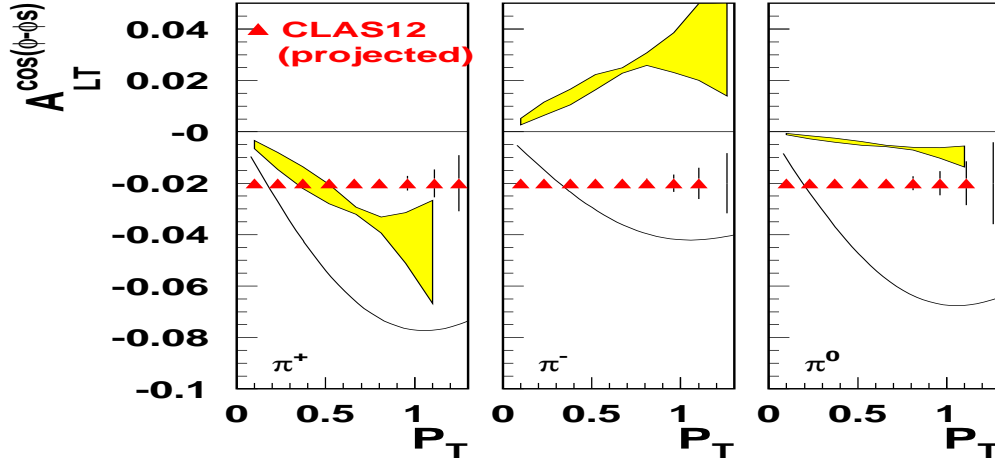


Figure 29: Expected statistical uncertainty for the $A_{LT}^{\cos(\phi-\phi_S)}$ amplitudes sensitive to the g_{1T}^\perp TMD as a function of x . Overlaid are also a band from calculations [119] of g_{1T} based on two transverse-momentum gaussian widths ($\langle k_T^2 \rangle = 0.15$ and 0.25 GeV^2). The curve is from light-cone constituent quark model [65].

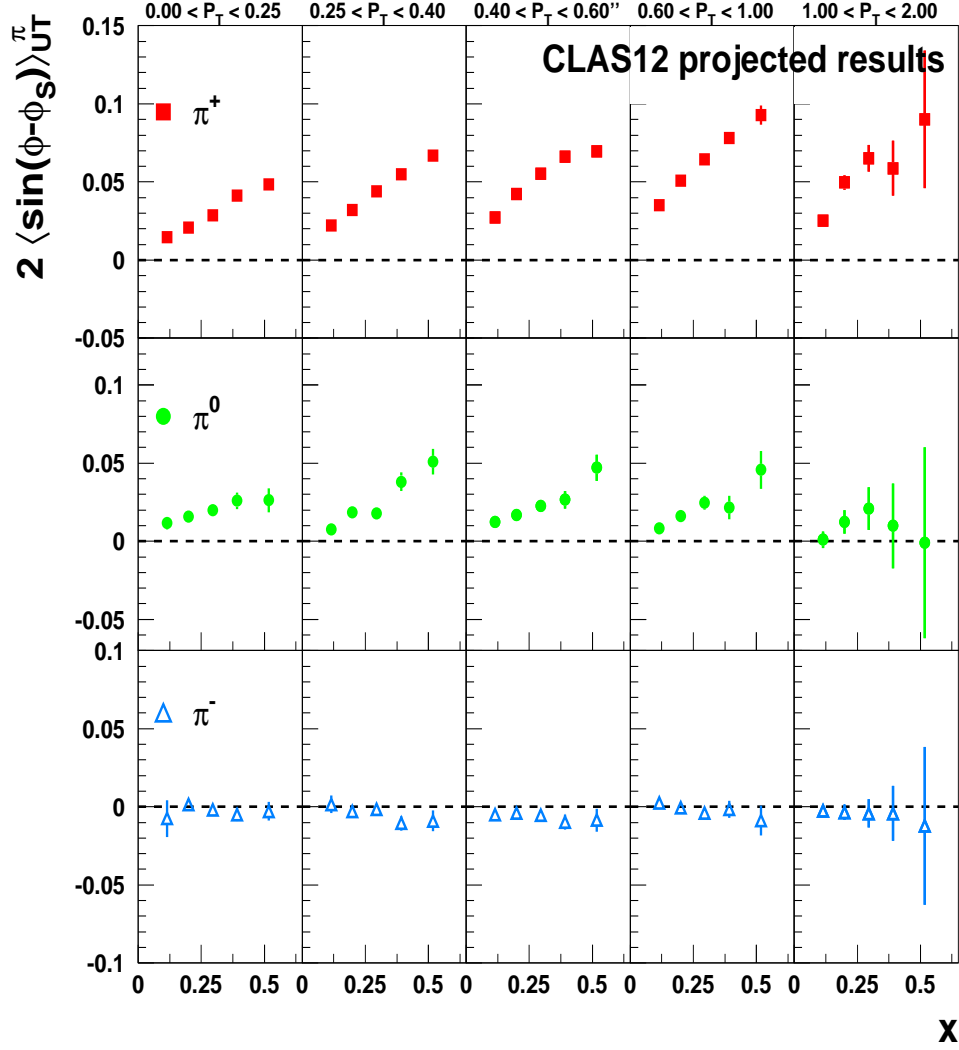


Figure 30: Expected 2-dimensional projections for the Sivers amplitudes (based on a 4D parameterization extracted from the HERMES data). Bins in $P_{h\perp}$ as a function of x for π^+ (top row), π^0 (middle row) and π^- (bottom row).

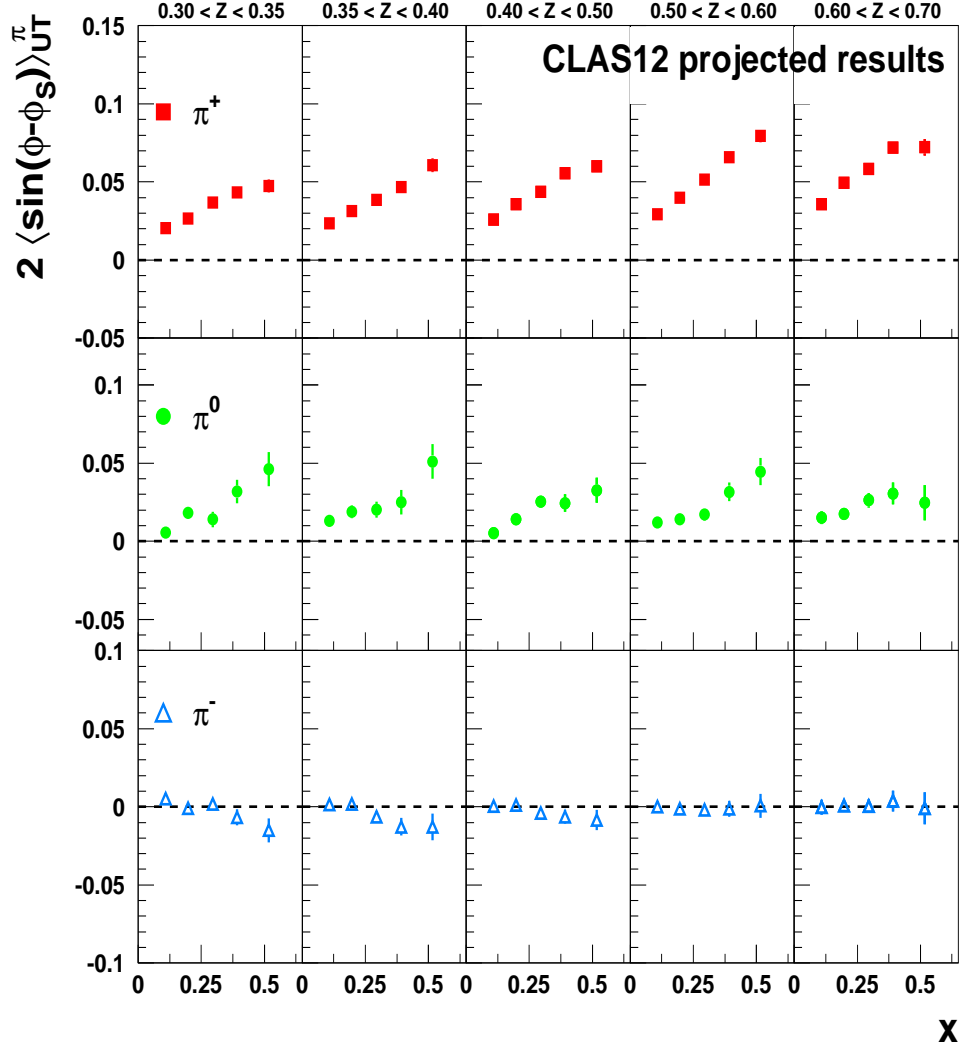


Figure 31: Expected 2-dimensional projections for the Sivers amplitudes (based on a 4D parameterization extracted from the HERMES data). Bins in z as a function of x for π^+ (top row), π^0 (middle row) and π^- (bottom row).

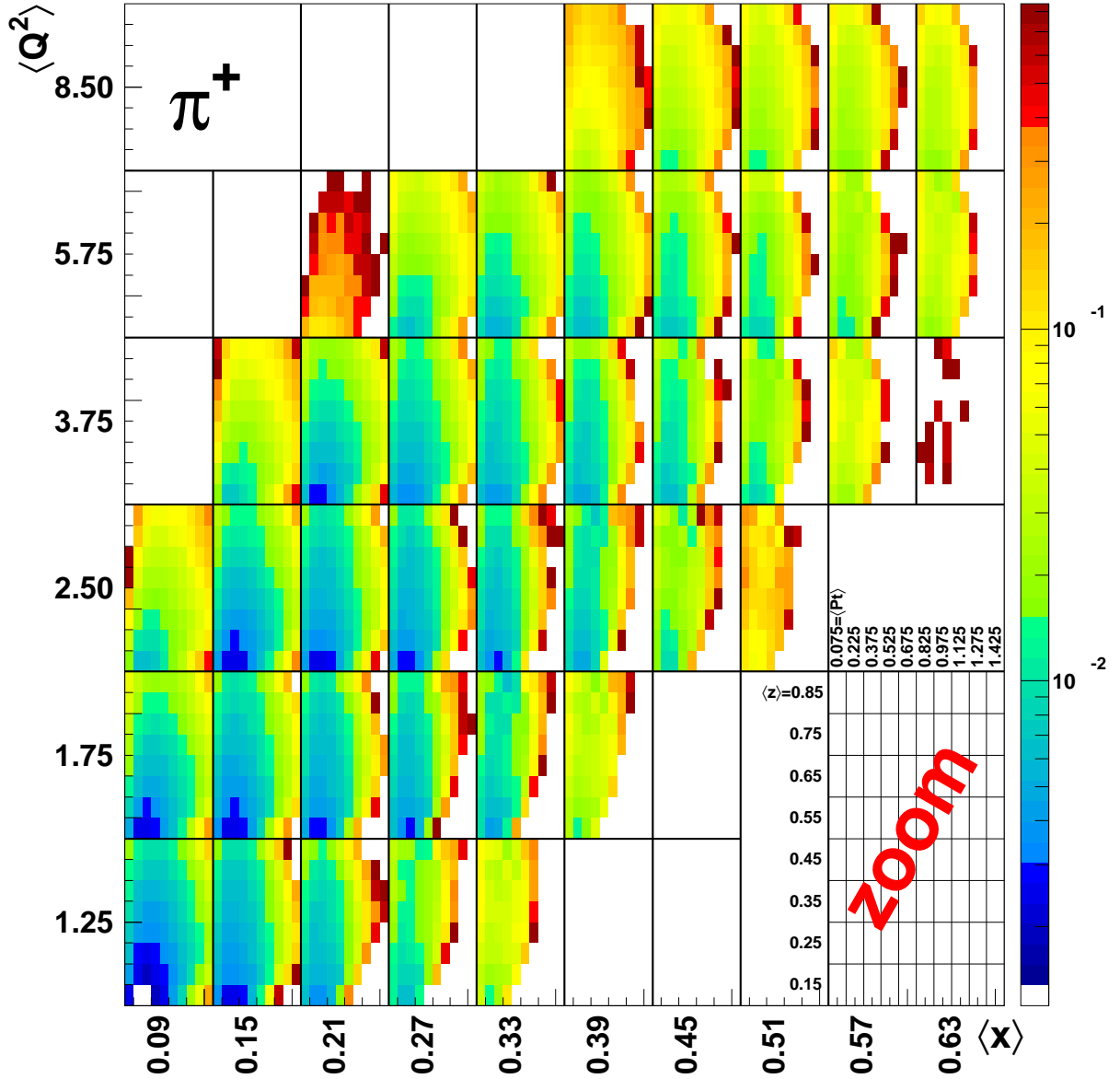


Figure 32: Expected statistical error in a 4-dimensional analysis of the Siverts TTSA $A_{UT}^{\sin(\phi-\phi_S)}$ for π^+ . Each $x-Q^2$ bin is subdivided in a matrix of $z-P_{h\perp}$ bins, as depicted in the bottom-right corner. For each bin the average kinematical values are reported. The colors correspond to the statistical errors that can be achieved in 80 days of data-taking. Note a precision of few percents can be obtained even in the high- Q^2 bins for $P_{h\perp}$ values up to 1 GeV/c.

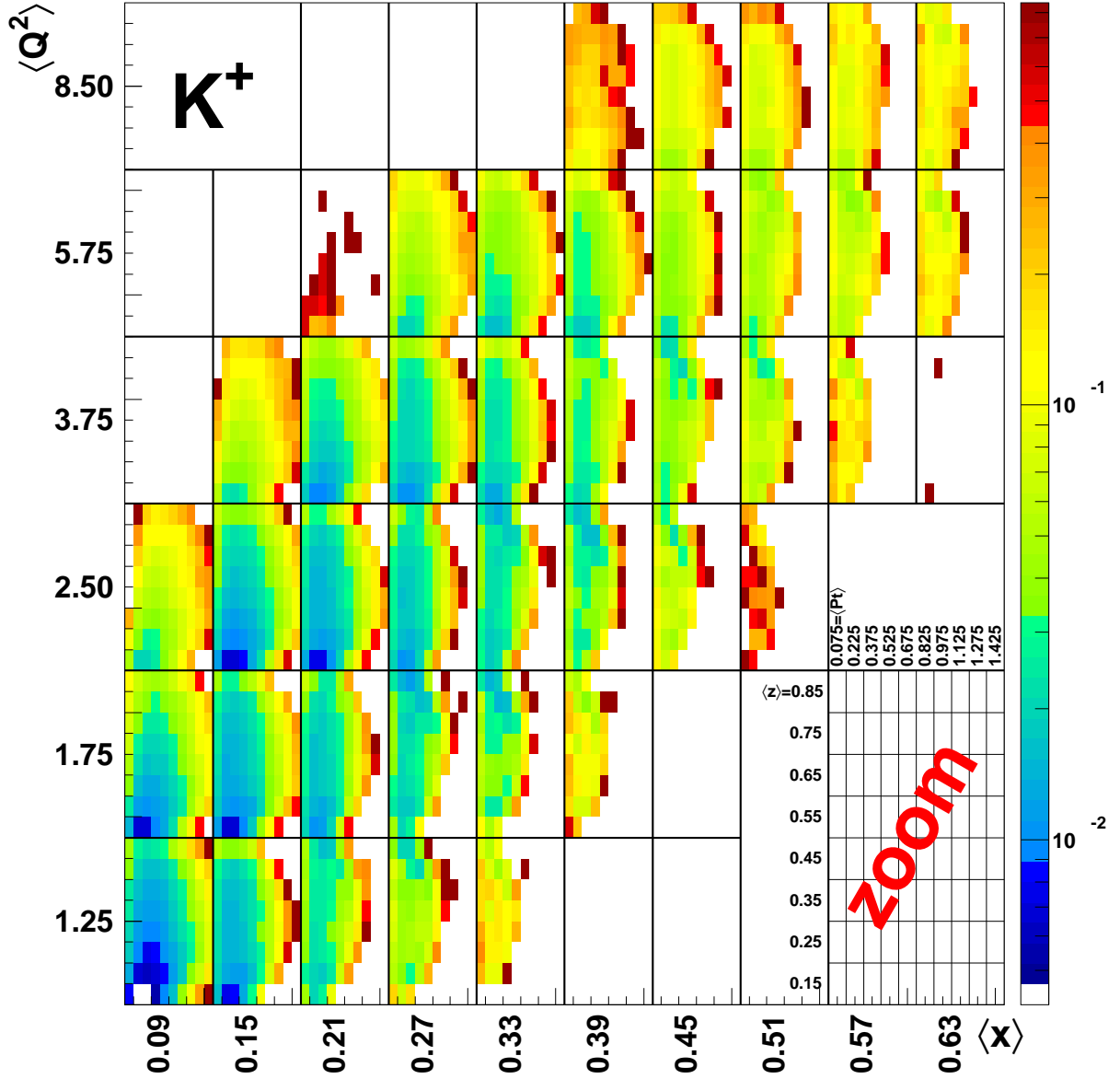


Figure 33: Expected statistical error in a 4-dimensional analysis of the Siverts TTSA $A_{UT}^{\sin(\phi-\phi_S)}$ for K^- . Each x - Q^2 bin is subdivided in a matrix of z - $P_{h\perp}$ bins, as depicted in bottom-right corner. For each bin the average kinematical values are reported. The colors correspond to the statistical errors that can be achieved in 80 days of data-taking. Note a precision of few percents can be obtained in a large portion of the phase space.

perturbative to non-perturbative transient. The projected statistical precision for a 4-dimensional analysis of the Sivers amplitudes are reported for π^+ and K^+ in Figs. 32-33. In the proposed data-taking time, a precise mapping of a large portion of the phase-space is achievable for pions, extending into the high- Q^2 high- $P_{h\perp}$ region of interest. In particular a precision of few percents can be obtained at large Q^2 for values of $P_{h\perp}$ up to 1 GeV/c. The x and Q^2 variables are typically correlated by the detector acceptance. Noteworthy the statistics of the proposed experiment allows to subdivide each x -bin in several Q^2 -bins thus disentangling the two kinematic dependences. An extended mapping is possible also in the kaon sector, although with a precision limited by the smaller yields.

4.6 Fourier Transformed Cross Sections

TMDs and transverse momentum-dependent fragmentation functions enter the SIDIS cross section in a convolution with respect to transverse momentum. In order to extract TMDs, it is therefore advantageous to project the differential cross section onto Fourier modes [120]. The result is a product of TMDs and fragmentation functions in Fourier space. The Fourier transform of a generic TMD f and a generic fragmentation function D is defined as

$$\tilde{f}(x, \mathbf{b}_T^2) \equiv \int d^2 \mathbf{k}_T e^{i \mathbf{b}_T \cdot \mathbf{k}_T} f(x, \mathbf{k}_T^2) = 2\pi \int d|\mathbf{k}_T| |\mathbf{k}_T| J_0(|\mathbf{b}_T| |\mathbf{k}_T|) f^a(x, \mathbf{k}_T^2), \quad (14)$$

$$\tilde{D}(z, \mathbf{b}_T^2) \equiv \int d^2 \mathbf{p}_T e^{i \mathbf{b}_T \cdot \mathbf{p}_T} D(z, \mathbf{p}_T^2) = 2\pi \int d|\mathbf{p}_T| |\mathbf{p}_T| J_0(|\mathbf{b}_T| |\mathbf{p}_T|) D^a(z, \mathbf{p}_T^2), \quad (15)$$

where J_0 is a Bessel function. We also need to introduce \mathbf{b}_T^2 -derivatives of the Fourier transformed distributions:

$$\begin{aligned} \tilde{f}^{(n)}(x, \mathbf{b}_T^2) &\equiv n! \left(-\frac{2}{M^2} \partial_{\mathbf{b}_T^2} \right)^n \tilde{f} = \frac{2\pi n!}{(M^2)^n} \int d|\mathbf{k}_T| |\mathbf{k}_T| \left(\frac{|\mathbf{k}_T|}{|\mathbf{b}_T|} \right)^n J_n(|\mathbf{b}_T| |\mathbf{k}_T|) f(x, \mathbf{k}_T^2), \\ \tilde{D}^{(n)}(z, \mathbf{b}_T^2) &\equiv n! \left(-\frac{2}{z^2 M_h^2} \partial_{\mathbf{b}_T^2} \right)^n \tilde{D} = \frac{2\pi n!}{(z^2 M_h^2)^n} \int d|\mathbf{p}_T| |\mathbf{p}_T| \left(\frac{|\mathbf{p}_T|}{|\mathbf{b}_T|} \right)^n J_n(|\mathbf{b}_T| |\mathbf{p}_T|) D(z, \mathbf{p}_T^2). \end{aligned} \quad (16)$$

With these definitions, we can identify the Fourier-modes of the cross section as products of the $\tilde{f}^{(n)}$ and $\tilde{D}^{(n)}$. At leading twist and tree-level, we find in the ϕ_h -independent channel

$$\begin{aligned} &\int_0^{2\pi} \frac{d\phi_S}{2\pi} \int_0^{2\pi} d\phi_h \int_0^\infty d|\mathbf{P}_{h\perp}| |\mathbf{P}_{h\perp}| J_0(|\mathbf{P}_{h\perp}| |\mathbf{b}_T|) \left[\frac{d\sigma}{dx dy d\phi_S dz_h d\phi_h |\mathbf{P}_{h\perp}| d|\mathbf{P}_{h\perp}|} \right] \\ &= \frac{\alpha^2}{y Q^2} \frac{y^2}{(1-\varepsilon)} \left(1 + \frac{\gamma^2}{2x} \right) \sum_a e_a^2 \left\{ \tilde{f}_1^{a(0)}(x, z^2 \mathbf{b}_T^2) + S_{\parallel} \lambda_e \sqrt{1-\varepsilon^2} \tilde{g}_1^{(0)a}(x, z^2 \mathbf{b}_T^2) \right\} \tilde{D}_1^{(0)a}(z, \mathbf{b}_T^2), \end{aligned}$$

where e_a is the electric charge of a quark of flavor a . The unpolarized contribution from f_1 can be isolated from that of g_1 by averaging over the helicity of the electron λ_e . The above transformation depends on the external parameter $\mathcal{B}_T \equiv |\mathbf{b}_T|$. Choosing different values of this parameter allows us to scan the transverse momentum dependence of the distributions in Fourier space.

A similar integration allows us to project out information on the transversity function h_1 :

$$\begin{aligned} & \int_0^{2\pi} \frac{d\phi_S}{2\pi} \int_0^{2\pi} d\phi_h \sin(\phi_h + \phi_S) \int_0^\infty d|\mathbf{P}_{h\perp}| |\mathbf{P}_{h\perp}| \frac{2J_1(|\mathbf{P}_{h\perp}||\mathbf{b}_T|)}{zM_h|\mathbf{b}_T|} \left[\frac{d\sigma}{dx dy d\phi_S dz_h d\phi_h |\mathbf{P}_{h\perp}| d|\mathbf{P}_{h\perp}|} \right] \\ &= \frac{\alpha^2}{yQ^2} \frac{y^2}{(1-\varepsilon)} \left(1 + \frac{\gamma^2}{2x} \right) |\mathbf{S}_\perp| \varepsilon \sum_a e_a^2 \tilde{h}_1^{(1)a}(x, z^2 \mathbf{b}_T^2) \tilde{H}_1^{\perp(1)a}(z, \mathbf{b}_T^2) . \quad (17) \end{aligned}$$

A similar integration allows us to project out information on the Sivers function f_{1T}^\perp :

$$\begin{aligned} & \int_0^{2\pi} \frac{d\phi_S}{2\pi} \int_0^{2\pi} d\phi_h \sin(\phi_h - \phi_S) \int_0^\infty d|\mathbf{P}_{h\perp}| |\mathbf{P}_{h\perp}| \frac{-2J_1(|\mathbf{P}_{h\perp}||\mathbf{b}_T|)}{zM|\mathbf{b}_T|} \left[\frac{d\sigma}{dx dy d\phi_S dz_h d\phi_h |\mathbf{P}_{h\perp}| d|\mathbf{P}_{h\perp}|} \right] \\ &= \frac{\alpha^2}{yQ^2} \frac{y^2}{(1-\varepsilon)} \left(1 + \frac{\gamma^2}{2x} \right) |\mathbf{S}_\perp| \sum_a e_a^2 \tilde{f}_{1T}^{\perp(1)a}(x, z^2 \mathbf{b}_T^2) \tilde{D}_1^{(0)a}(z, \mathbf{b}_T^2) . \quad (18) \end{aligned}$$

A similar integration allows us to project out information on the worm gear function g_{1T}^\perp :

$$\begin{aligned} & \int_0^{2\pi} \frac{d\phi_S}{2\pi} \int_0^{2\pi} d\phi_h \cos(\phi_h - \phi_S) \int_0^\infty d|\mathbf{P}_{h\perp}| |\mathbf{P}_{h\perp}| \frac{2J_1(|\mathbf{P}_{h\perp}||\mathbf{b}_T|)}{zM|\mathbf{b}_T|} \left[\frac{d\sigma}{dx dy d\phi_S dz_h d\phi_h |\mathbf{P}_{h\perp}| d|\mathbf{P}_{h\perp}|} \right] \\ &= \frac{\alpha^2}{yQ^2} \frac{y^2}{(1-\varepsilon)} \left(1 + \frac{\gamma^2}{2x} \right) |\mathbf{S}_\perp| \lambda_e \sqrt{1-\varepsilon^2} \sum_a e_a^2 \tilde{g}_{1T}^{(1)a}(x, z^2 \mathbf{b}_T^2) \tilde{D}_1^{(0)a}(z, \mathbf{b}_T^2) . \quad (19) \end{aligned}$$

A similar integration allows us to project out information on the Pretzelosity function h_{1T}^\perp :

$$\begin{aligned} & \int_0^{2\pi} \frac{d\phi_S}{2\pi} \int_0^{2\pi} d\phi_h \sin(3\phi_h - \phi_S) \int_0^\infty d|\mathbf{P}_{h\perp}| |\mathbf{P}_{h\perp}| \frac{8J_3(|\mathbf{P}_{h\perp}||\mathbf{b}_T|)}{z^3 M^2 M_h |\mathbf{b}_T|^3} \left[\frac{d\sigma}{dx dy d\phi_S dz_h d\phi_h |\mathbf{P}_{h\perp}| d|\mathbf{P}_{h\perp}|} \right] \\ &= \frac{\alpha^2}{yQ^2} \frac{y^2}{(1-\varepsilon)} \left(1 + \frac{\gamma^2}{2x} \right) |\mathbf{S}_\perp| \varepsilon \sum_a e_a^2 \tilde{h}_{1T}^{\perp(2)a}(x, z^2 \mathbf{b}_T^2) \tilde{H}_1^{\perp(1)a}(z, \mathbf{b}_T^2) . \quad (20) \end{aligned}$$

The formalism in \mathbf{b}_T -space avoids convolutions, making it easier to perform a model independent analysis. The fundamental objects in this formalism are the (derivatives of) Fourier transformed TMDs $\tilde{f}_1^{(0)}$, $\tilde{g}_1^{(0)}$, $\tilde{h}_1^{(0)}$, $\tilde{f}_{1T}^{\perp(1)}$, $\tilde{g}_{1T}^{(1)}$, $\tilde{h}_1^{\perp(1)}$, $\tilde{h}_{1L}^{\perp(1)}$, $\tilde{h}_{1T}^{\perp(2)}$ and fragmentation functions $\tilde{D}_1^{(0)}$, $\tilde{H}_1^{\perp(1)}$. Theoretically, these $|\mathbf{b}_T|$ -dependent distributions contain the same information as their conventional, momentum-dependent

counterparts. In practice, however, only a limited range in $|\mathbf{b}_T|$ is accessible with sufficient accuracy from experiments. Thus, to carry out the Fourier transformation back to conventional TMDs, model assumptions must be made in order to supplement information over the whole range of $|\mathbf{b}_T|$.

The $|\mathbf{b}_T|$ -dependent distributions are also the objects that appear in the evolution equations that describe the scale dependence beyond tree level, see, e.g., Ref. [121]. Lattice calculations of TMDs are performed in b -space rather than momentum space as well [53, 54]. This suggests that it is the $|\mathbf{b}_T|$ -dependent quantities that are most suitable for a model independent analysis and comparison with lattice data.

The main questions to address when applying this procedure to CLAS12 data are the limited range in hadron transverse momenta and the low Q^2 , as Fourier-transformed quantities receive (through the Fourier integral) contributions from the entire range of $P_{h\perp}$, while the whole factorization formalism requires $P_{h\perp} \ll Q$. The effect of the cut on the maximum value of $P_{h\perp}$ is shown in Fig. 34. Due to contributions to the cross section at high $|\mathbf{P}_{h\perp}|$ that are not accounted for in the TMD factorized framework, further studies are needed as to whether and in what range of \mathbf{b}_T we can extract TMDs in Fourier space at JLab kinematics with moderate theoretical uncertainties. Most likely, precision measurements at large \mathbf{b}_T will require precision measurements at $P_{h\perp}$ in the range of 1.2-1.5 GeV, limiting the minimum Q^2 to at least 2 GeV².

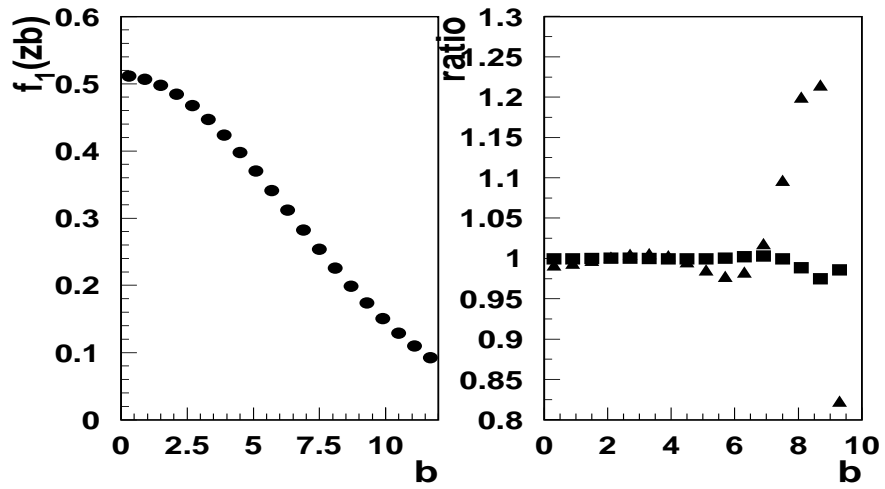


Figure 34: Extracted Fourier transformed f_1 from unpolarized MC with Gaussian widths for f_1 and D_1 assumed as 0.2 GeV^2 and 0.25 GeV^2 , respectively, and average x and z at 0.2 and 0.5, respectively. The ratio is defined as the ratio of Fourier transformed b -dependences for integrals over k_T for $P_{h\perp} < P_{Tmax}$ and the full $P_{h\perp}$ -integration. Squares and triangles correspond to $P_{Tmax} = 1.5$ and 1.2 GeV , respectively.

5 Summary and Beam Time Request

In this experiment we propose a study of the Transverse Momentum-Dependent (TMD) parton distributions via measurements of pion and kaon electro-production in SIDIS in the hard scattering regime ($Q^2 > 1 \text{ GeV}^2$, $W^2 > 4 \text{ GeV}^2$), using an 11 GeV electron beam from the upgraded CEBAF facility and the CLAS12 detector.

For this proposal, we request 100 days of beam time with high polarization of electrons at 11 GeV and a transversely polarized hydrogen target (80 days of data-taking plus 20 days for calibration, empty target runs and supportive tests). We expect to improve substantially the statistical precision of the HERMES measurements on the hydrogen target and the COMPASS measurements on the deuterium and proton targets, especially in the intermediate-to-large x region ($x > 0.2$). The precise mapping of the valence region is important to extract fundamental quantities like the tensor charge [88, 122], which can be compared to Lattice QCD calculations [123].

The large acceptance of the CLAS12 detector permits a simultaneous scan of various variables (x_B , z , $P_{h\perp}$ and Q^2). The most important advantage of the HD-Ice target compared to nuclear targets (NH_3 , ND_3) is its superior dilution factor. It is a factor of 2 better at small $P_{h\perp}$ of hadrons, and goes up to a factor of 6 at $P_{h\perp} > 0.8 \text{ GeV}$ [112]. Good dilution factor at large $P_{h\perp}$ is crucial for studies of transverse momentum dependence of TMDs, which is one of the main goals of our proposal. Wide acceptance of the HD-Ice also increases the kinematical coverage of measurements, in particular at large Q^2 , providing a wider range in Q^2 to control possible higher twist contributions in the measurements of TMD observables in general, and of the Sivers asymmetry in particular. The CLAS12 data, covering large transverse momentum of pions and kaons at large Q^2 values, will be crucial in the interpretation of the proposed Hall-A experiment on the ^3He target.

Analysis of already existing electroproduction data from CLAS with unpolarized and longitudinally polarized targets has shown that the proposed measurements are feasible. Combined analysis of all three data sets will constrain different TMDs and relations between them, providing important input to global analysis of PDFs and will provide a substantial contribution to *nucleon tomography*.

Beam Request

We ask the PAC to award 100 days of beam time for a dedicated high statistics SIDIS experiment with the transversely polarized target.

The measurement will produce precise data on the underlying quark transverse momentum distributions, providing important information on spin-orbit correlations. Understanding of spin-orbit correlations together with independent measurements related to spatial distributions and orbital angular momentum will help to construct a more complete picture of the nucleon in terms of elementary quarks and gluons going beyond the simple collinear partonic representation.

References

- [1] J.P. Ralston and D.E. Soper, Nucl. Phys. B152 (1979) 109.
- [2] D.W. Sivers, Phys. Rev. D41 (1990) 83.
- [3] A. Kotzinian, Nucl. Phys. B441 (1995) 234, hep-ph/9412283.
- [4] P.J. Mulders and R.D. Tangerman, Nucl. Phys. B461 (1996) 197, hep-ph/9510301.
- [5] D. Boer and P.J. Mulders, Phys. Rev. D57 (1998) 5780, hep-ph/9711485.
- [6] P.J. Mulders and J. Rodrigues, Phys. Rev. D63 (2001) 094021, hep-ph/0009343.
- [7] A.V. Belitsky, X.d. Ji and F. Yuan, Phys. Rev. D69 (2004) 074014, hep-ph/0307383.
- [8] A. Bacchetta et al., JHEP 02 (2007) 093, hep-ph/0611265.
- [9] M. Burkardt, Phys. Rev. D62 (2000) 071503, hep-ph/0005108.
- [10] K. Goeke, M.V. Polyakov and M. Vanderhaeghen, Prog. Part. Nucl. Phys. 47 (2001) 401, hep-ph/0106012.
- [11] M. Burkardt, Int. J. Mod. Phys. A18 (2003) 173, hep-ph/0207047.
- [12] M. Diehl, Phys. Rept. 388 (2003) 41, hep-ph/0307382.
- [13] X. Ji, Ann. Rev. Nucl. Part. Sci. 54 (2004) 413.
- [14] A.V. Belitsky and A.V. Radyushkin, Phys. Rept. 418 (2005) 1, hep-ph/0504030.
- [15] S. Boffi and B. Pasquini, Riv. Nuovo Cim. 30 (2007) 387, 0711.2625.
- [16] X.d. Ji, Phys. Rev. Lett. 91 (2003) 062001, hep-ph/0304037.
- [17] S.J. Brodsky, D.S. Hwang and I. Schmidt, Phys. Lett. B530 (2002) 99, hep-ph/0201296.
- [18] J.C. Collins, Phys. Lett. B536 (2002) 43, hep-ph/0204004.
- [19] X. Ji and F. Yuan, Phys. Lett. B543 (2002) 66, hep-ph/0206057.
- [20] A.V. Belitsky, X. Ji and F. Yuan, Nucl. Phys. B656 (2003) 165, hep-ph/0208038.
- [21] D. Boer, S.J. Brodsky and D.S. Hwang, Phys. Rev. D67 (2003) 054003, hep-ph/0211110.

- [22] D. Boer, P.J. Mulders and F. Pijlman, Nucl. Phys. B667 (2003) 201, hep-ph/0303034.
- [23] X. Ji, J. Ma and F. Yuan, Phys. Rev. D71 (2005) 034005, hep-ph/0404183.
- [24] J.C. Collins and A. Metz, Phys. Rev. Lett. 93 (2004) 252001, hep-ph/0408249.
- [25] K. Goeke, A. Metz and M. Schlegel, Phys. Lett. B618 (2005) 90, hep-ph/0504130.
- [26] S. Meissner, A. Metz and K. Goeke, Phys. Rev. D76 (2007) 034002, hep-ph/0703176.
- [27] C. Lorce and B. Pasquini, (2011), 1104.5651.
- [28] J.C. Collins, Nucl. Phys. B396 (1993) 161, hep-ph/9208213.
- [29] S.J. Brodsky, D.S. Hwang and I. Schmidt, Nucl. Phys. B642 (2002) 344, hep-ph/0206259.
- [30] Z.B. Kang and J.W. Qiu, Phys. Rev. Lett. 103 (2009) 172001, 0903.3629.
- [31] COMPASS, A. Kotzinian, (2007), arXiv:0705.2402 [hep-ex].
- [32] COMPASS, P. Abbon et al., Nucl. Instrum. Meth. A577 (2007) 455, hep-ex/0703049.
- [33] R.L. Jaffe and X.D. Ji, Nucl. Phys. B375 (1992) 527.
- [34] E. Leader, A.V. Sidorov and D.B. Stamenov, Phys. Lett. B462 (1999) 189, hep-ph/9905512.
- [35] H.C. Kim, M.V. Polyakov and K. Goeke, Phys. Lett. B387 (1996) 577, hep-ph/9604442.
- [36] M. Anselmino et al., Phys. Rev. D71 (2005) 074006, hep-ph/0501196.
- [37] J.C. Collins et al., Phys. Rev. D73 (2006) 094023, hep-ph/0511272.
- [38] W. Vogelsang and F. Yuan, Phys. Rev. D72 (2005) 054028, hep-ph/0507266.
- [39] M. Anselmino et al., hep-ph/0805.2677 (2008), 0805.2677.
- [40] I.O. Cherednikov and N.G. Stefanis, Phys. Rev. D77 (2008) 094001, 0710.1955.
- [41] I.O. Cherednikov and N.G. Stefanis, Nucl. Phys. B802 (2008) 146, 0802.2821.
- [42] I.O. Cherednikov and N.G. Stefanis, Phys. Rev. D80 (2009) 054008, 0904.2727.

- [43] Fermilab E906/SeaQuest, P. Reimer et al., (2001), Fermilab Proposal 906, Unpublished, <http://projects-docdb.fnal.gov/cgi-bin/RetrieveFile?docid=402>.
- [44] E906/SeaQuest, P. Reimer et al., (2006), Experiment update to Fermilab PAC <http://projects-docdb.fnal.gov/cgi-bin/ShowDocument?docid=395>.
- [45] L.B. et al., (2011), http://www.bnl.gov/npp/docs/pac0611/DY_pro_110516_final.2.pdf.
- [46] D. Boer, (2011), 1105.2543.
- [47] H. Mkrtchyan et al., Phys. Lett. B665 (2008) 20, 0709.3020.
- [48] The CLAS, H. Avakian et al., Phys. Rev. Lett. 105 (2010) 262002, 1003.4549.
- [49] Z. Lu and B.Q. Ma, Nucl. Phys. A741 (2004) 200, hep-ph/0406171.
- [50] M. Anselmino et al., Phys. Rev. D74 (2006) 074015, hep-ph/0608048.
- [51] B. Pasquini, S. Cazzaniga and S. Boffi, Phys. Rev. D78 (2008) 034025, 0806.2298.
- [52] C. Bourrely, F. Buccella and J. Soffer, (2010), 1008.5322.
- [53] P. Hagler et al., Europhys. Lett. 88 (2009) 61001, 0908.1283.
- [54] B.U. Musch et al., (2010), 1011.1213.
- [55] Z.B. Kang et al., Phys. Rev. D83 (2011) 094001, 1103.1591.
- [56] G.A. Miller, Phys. Rev. C76 (2007) 065209, 0708.2297.
- [57] M. Burkardt, hep-ph 0709.2966 (2007), 0709.2966.
- [58] J. She, J. Zhu and B.Q. Ma, Phys. Rev. D79 (2009) 054008, 0902.3718.
- [59] H. Avakian et al., (2008), 0805.3355.
- [60] H. Avakian et al., Phys. Rev. D81 (2010) 074035, 1001.5467.
- [61] H. Avakian et al., Mod. Phys. Lett. A24 (2009) 2995, 0910.3181.
- [62] M. Burkardt and H. BC, Phys. Rev. D79 (2009) 071501, 0812.1605.
- [63] X.D. Ji, Phys. Rev. Lett. 78 (1997) 610, hep-ph/9603249.
- [64] P. Schweitzer, T. Teckentrup and A. Metz, Phys. Rev. D81 (2010) 094019, 1003.2190.
- [65] S. Boffi et al., Phys. Rev. D79 (2009) 094012, 0903.1271.

- [66] B. Pasquini and F. Yuan, Phys. Rev. D81 (2010) 114013, 1001.5398.
- [67] B.U. Musch, (2009), 0907.2381.
- [68] HERMES, A. Airapetian et al., Phys. Rev. Lett. 84 (2000) 4047, hep-ex/9910062.
- [69] HERMES, A. Airapetian et al., Phys. Rev. Lett. 94 (2005) 012002, hep-ex/0408013.
- [70] COMPASS, V.Y. Alexakhin et al., Phys. Rev. Lett. 94 (2005) 202002, hep-ex/0503002.
- [71] COMPASS, E.S. Ageev et al., Nucl. Phys. B765 (2007) 31, hep-ex/0610068.
- [72] D.W. Sivers, Phys. Rev. D43 (1991) 261.
- [73] M. Anselmino and F. Murgia, Phys. Lett. B442 (1998) 470, hep-ph/9808426.
- [74] H. Avakian et al., JLab Experiment E12-07-107 (2007).
- [75] H. Avakian et al., JLab Experiment E12-09-009 (2009).
- [76] H. Avakian et al., JLab Experiment E12-09-008 (2009).
- [77] H. Avakian et al., JLab Experiment E12-09-007 (2009).
- [78] X.d. Ji, J.P. Ma and F. Yuan, Phys. Lett. B597 (2004) 299, hep-ph/0405085.
- [79] X. Ji et al., Phys. Rev. D73 (2006) 094017, hep-ph/0604023.
- [80] J.w. Qiu and G.F. Sterman, Phys. Rev. Lett. 67 (1991) 2264.
- [81] E581, D.L. Adams et al., Z. Phys. C56 (1992) 181.
- [82] STAR, J. Adams et al., Phys. Rev. Lett. 92 (2004) 171801, hep-ex/0310058.
- [83] A.M. Kotzinian and P.J. Mulders, Phys. Rev. D54 (1996) 1229, hep-ph/9511420.
- [84] HERMES, A. Airapetian et al., Phys. Lett. B693 (2010) 11, 1006.4221.
- [85] The COMPASS, M.G. Alekseev et al., Phys. Lett. B692 (2010) 240, 1005.5609.
- [86] M.G. Alekseev et al., Eur. Phys. J. C70 (2010) 39, 1007.1562.
- [87] C.S. for COMPASS, (2011), DIS 2011 Conference.
- [88] M. Anselmino et al., Nucl. Phys. Proc. Suppl. 191 (2009) 98, 0812.4366.

- [89] HERMES, A. Airapetian et al., Phys. Rev. Lett. 103 (2009) 152002, 0906.3918.
- [90] BELLE, K. Abe et al., Phys. Rev. Lett. 96 (2006) 232002, hep-ex/0507063.
- [91] Belle, A. Ogawa et al., AIP Conf. Proc. 915 (2007) 575.
- [92] Belle, R. Seidl et al., Phys. Rev. D78 (2008) 032011, 0805.2975.
- [93] A. Bacchetta et al., Phys. Rev. D65 (2002) 094021, hep-ph/0201091.
- [94] A.V. Efremov, K. Goeke and P. Schweitzer, Phys. Rev. D67 (2003) 114014, hep-ph/0208124.
- [95] A.M. Kotzinian et al., (1999), hep-ph/9908466.
- [96] M. Anselmino et al., (2007), hep-ph/0701006.
- [97] COMPASS, B. Parsamyan, Eur. Phys. J. ST 162 (2008) 89, 0709.3440.
- [98] H. Avakian et al., Phys. Rev. Lett. 99 (2007) 082001, 0705.1553.
- [99] HERMES, A. Airapetian et al., Phys. Lett. B562 (2003) 182, hep-ex/0212039.
- [100] J.C. Collins et al., Phys. Rev. D73 (2006) 014021, hep-ph/0509076.
- [101] European Muon, M. Arneodo et al., Z. Phys. C34 (1987) 277.
- [102] BELLE Collaboration, R. Seidl et al., Phys.Rev. D78 (2008) 032011.
- [103] I.G. for BaBar, Nuovo Cimento 33C (2010) 269.
- [104] R.L. Jaffe, Int. J. Mod. Phys. A18 (2003) 1141, hep-ph/0201068.
- [105] J. Zhu and B.Q. Ma, (2011), 1104.5545.
- [106] Hall-A, . X.Jiang et al., Hall-A proposal E06-010 (2006).
- [107] H. Avakian et al., JLab Experiment E12-07-015 (2008).
- [108] H. Avakian et al., JLab Experiment E12-06-015 (2008).
- [109] G. Cates et al., JLab Experiment E12-11-007 (2008).
- [110] H. Hao, Q. X. and P. J.-C., JLab Experiment E12-11-007 (2008).
- [111] H. Gao et al., Eur. Phys. J. Plus 126 (2011) 2, 1009.3803.
- [112] W.K. Brooks and H. Hakobyan, Nucl. Phys. A830 (2009) 361c, 0907.4606.
- [113] E143, K. Abe et al., Phys. Rev. D58 (1998) 112003, hep-ph/9802357.

- [114] CLAS, . A.Sandorfi et al., CLAS proposal E06-101 (2006).
- [115] A. Caracappa and C. Thorn, AIP Conf. Proc. 675 (2003) 867.
- [116] C. Thorn and . Caracappa, AIP Conf. Proc. (2007) (in press).
- [117] Jefferson Lab Hall A, M.K. Jones et al., Phys. Rev. Lett. 84 (2000) 1398, nucl-ex/9910005.
- [118] A. Efremov et al., AIP Conf.Proc. 1149 (2009) 547, 0812.3246.
- [119] A. Kotzinian, B. Parsamyan and A. Prokudin, Phys. Rev. D73 (2006) 114017, hep-ph/0603194.
- [120] D. Boer et al., (2011), in preparation.
- [121] A. Idilbi et al., Phys. Rev. D70 (2004) 074021, hep-ph/0406302.
- [122] M. Wakamatsu, Phys. Rev. D79 (2009) 0140338, 0811.4196.
- [123] M. Goeckeler et al., Phys. Lett. B627 (2005) 113, 0507001.