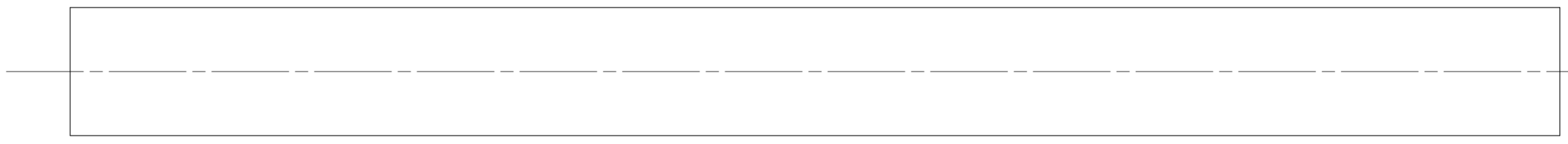
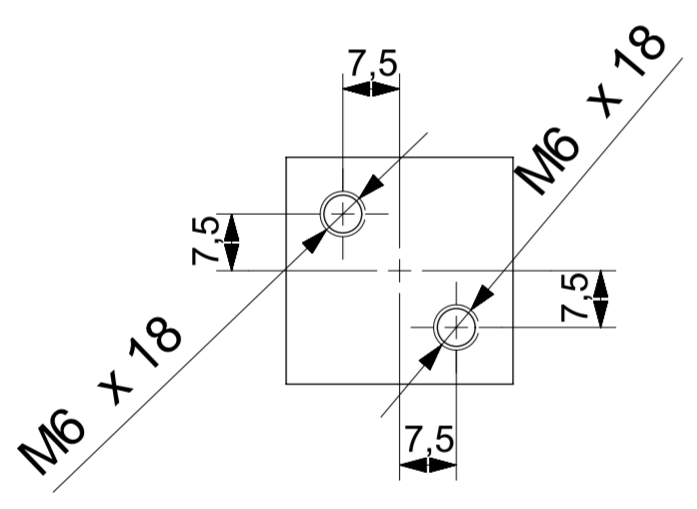
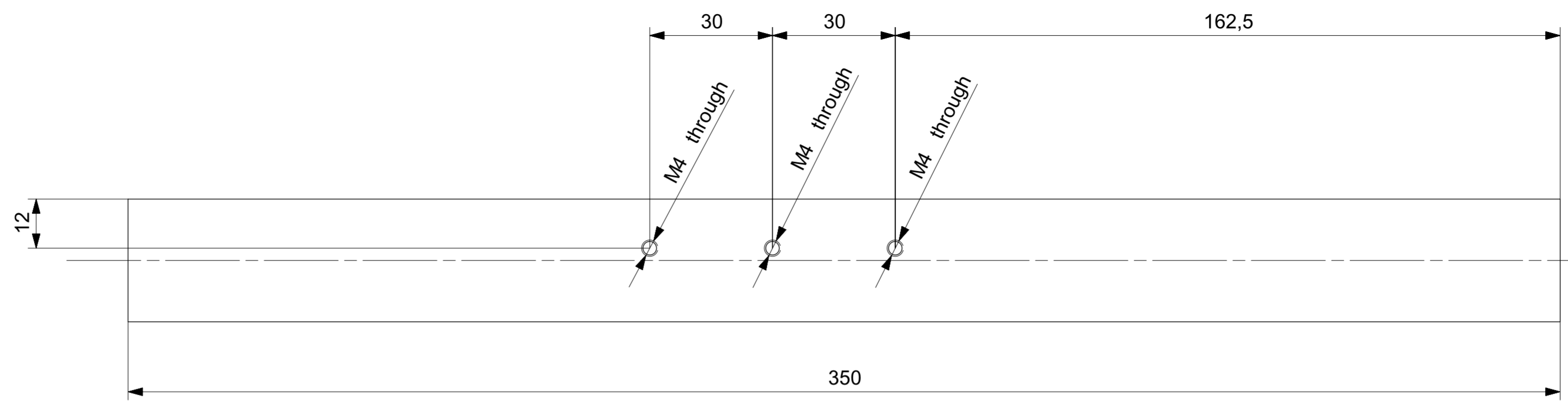
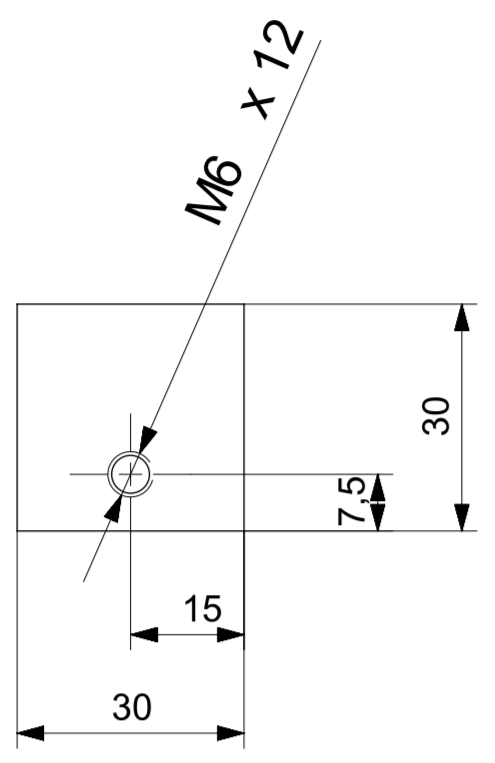



All dimension in:  
 mm  cm  m  in  ft

| Rev.N | Revision note | Date | Signature |
|-------|---------------|------|-----------|
|       |               |      |           |



3,2 / INNER EDGE CORNERS = 0,4  
 OUTER EDGE CORNERS = 0,2

|   |         |                                     |                  |  |
|---|---------|-------------------------------------|------------------|--|
| 5   | ROF-006 | AL6061                              | SUPPOTING BAR1_1 | 2  |
| PART N.   | DRAWING | MATERIAL                            | DENOMINATION     | Q.TY   |
| Gen. Tol. for untoleranced dimension: ISO 2768-mk-E   |         | Geometrical tolerance: ISO 8015 - E |                  | Roughness: ISO 1302  |
|  Istituto Nazionale di Fisica Nucleare<br>Sezione di Ferrara |         | Designer<br>V. Carassiti            |                  | c/o Polo Tecnico-Scientifico<br>Blocco C - Studio 107<br>Via Saragat 1 - 44100 Ferrara<br>Tel 0532974281<br>e-mail: carassiti@fe.infn.it |
| PAX   |         | Experiment/Project<br>DETECTOR      |                  | Date<br>08/10/2015   |
|   |         | Scale<br>1:1                        |                  | Document no.   |
|   |         | Size<br>A2                          |                  | File name<br>ROF-006_dwg1  |
|   |         | Num. of Sheet                       |                  |  |