

D0 simulations

L. Barion, G. Battaglia, M. Contalbrigo,
P. Lenisa, A. Movsisyan, L. Pappalardo
INFN Ferrara

Reference Configuration

0	0	0
0	0	0
0	0	0

Same radius (4000 mm) for all mirrors

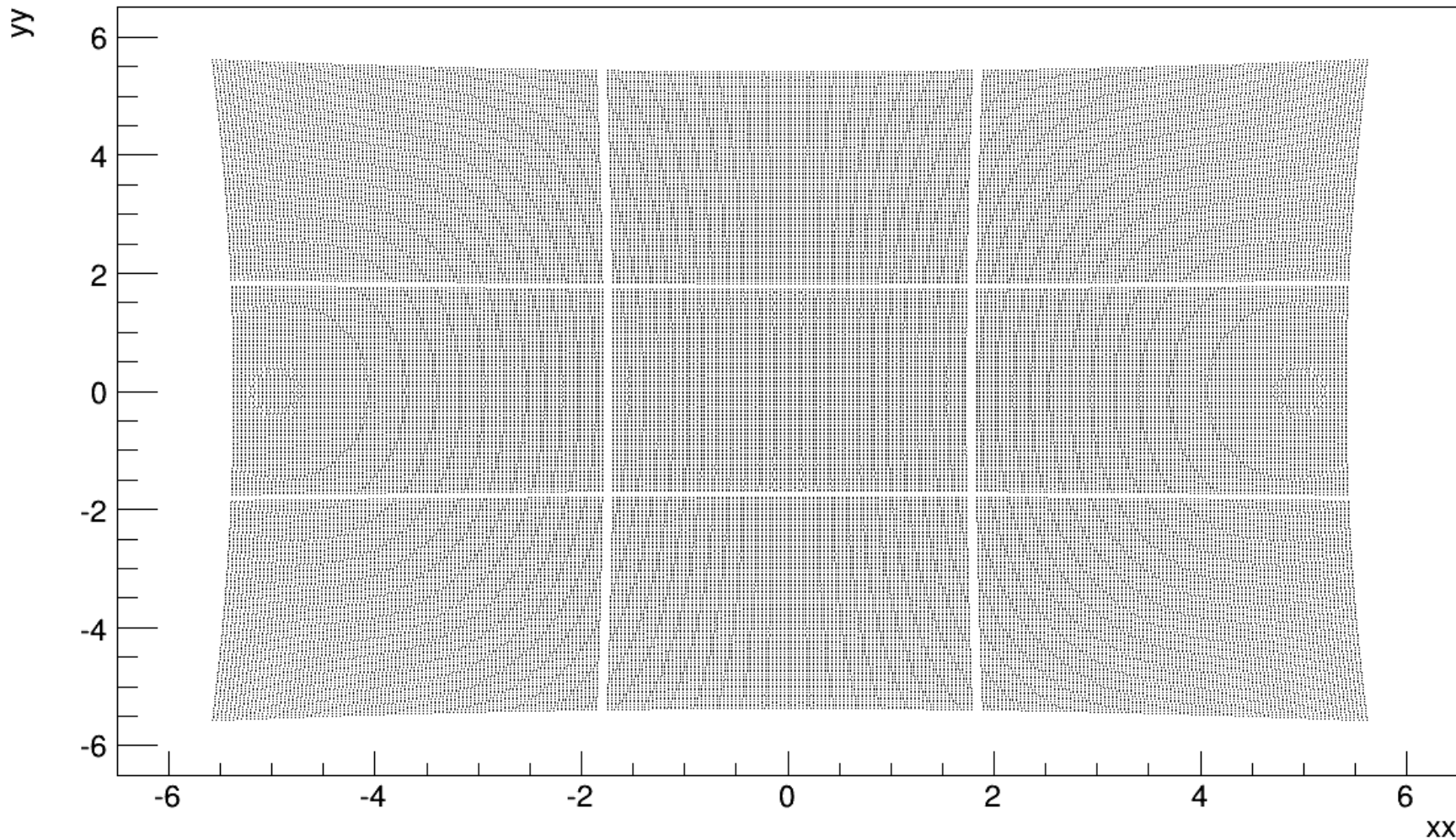
Configuration 0

+3	-1	+1
-3	+4	+2
0	-1	-2

$$R = r_0 + r_{\text{err}} \bullet \text{epsilon}$$

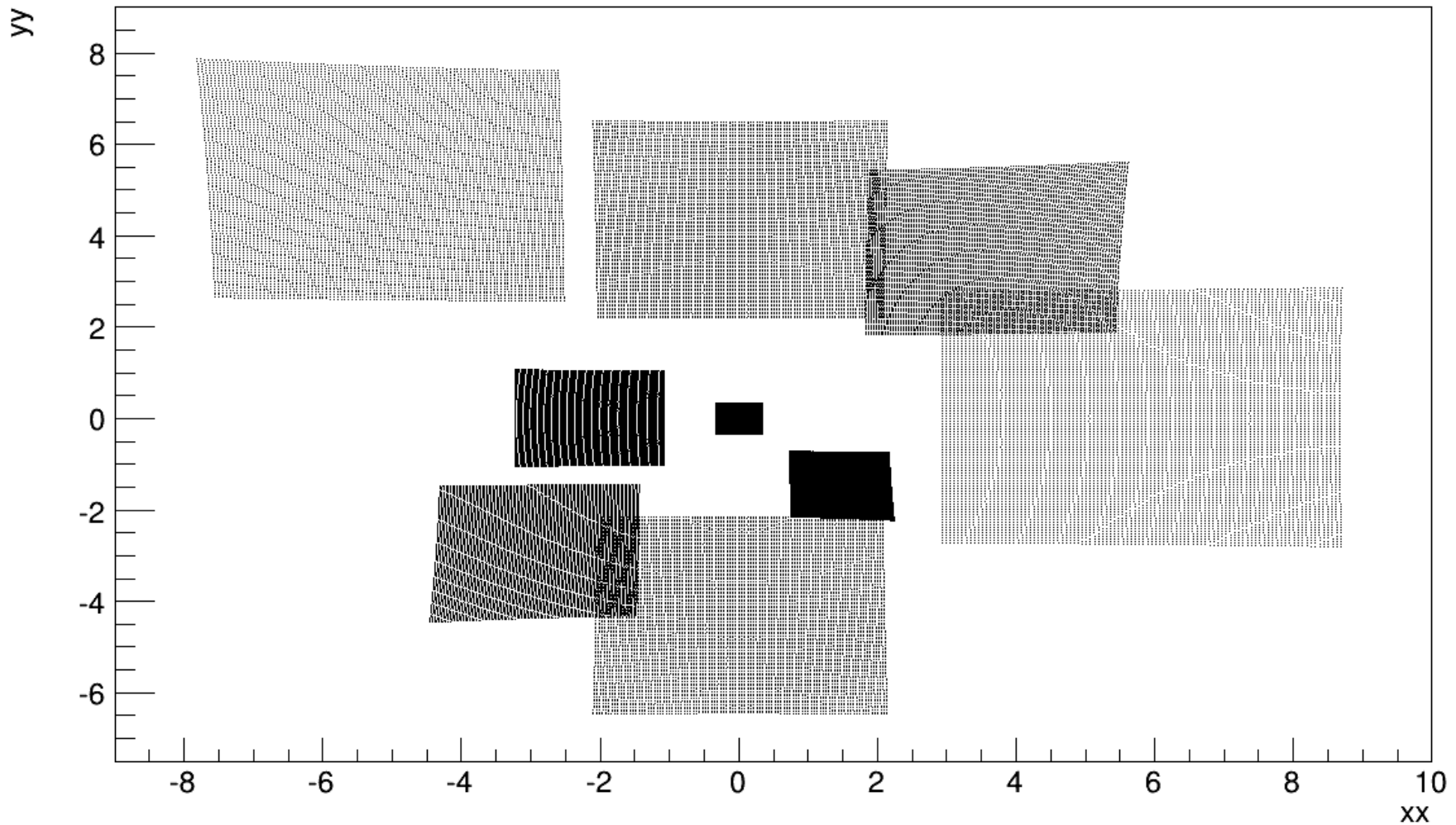
Reference configuration

epsilon=0 source distance 4010 mm

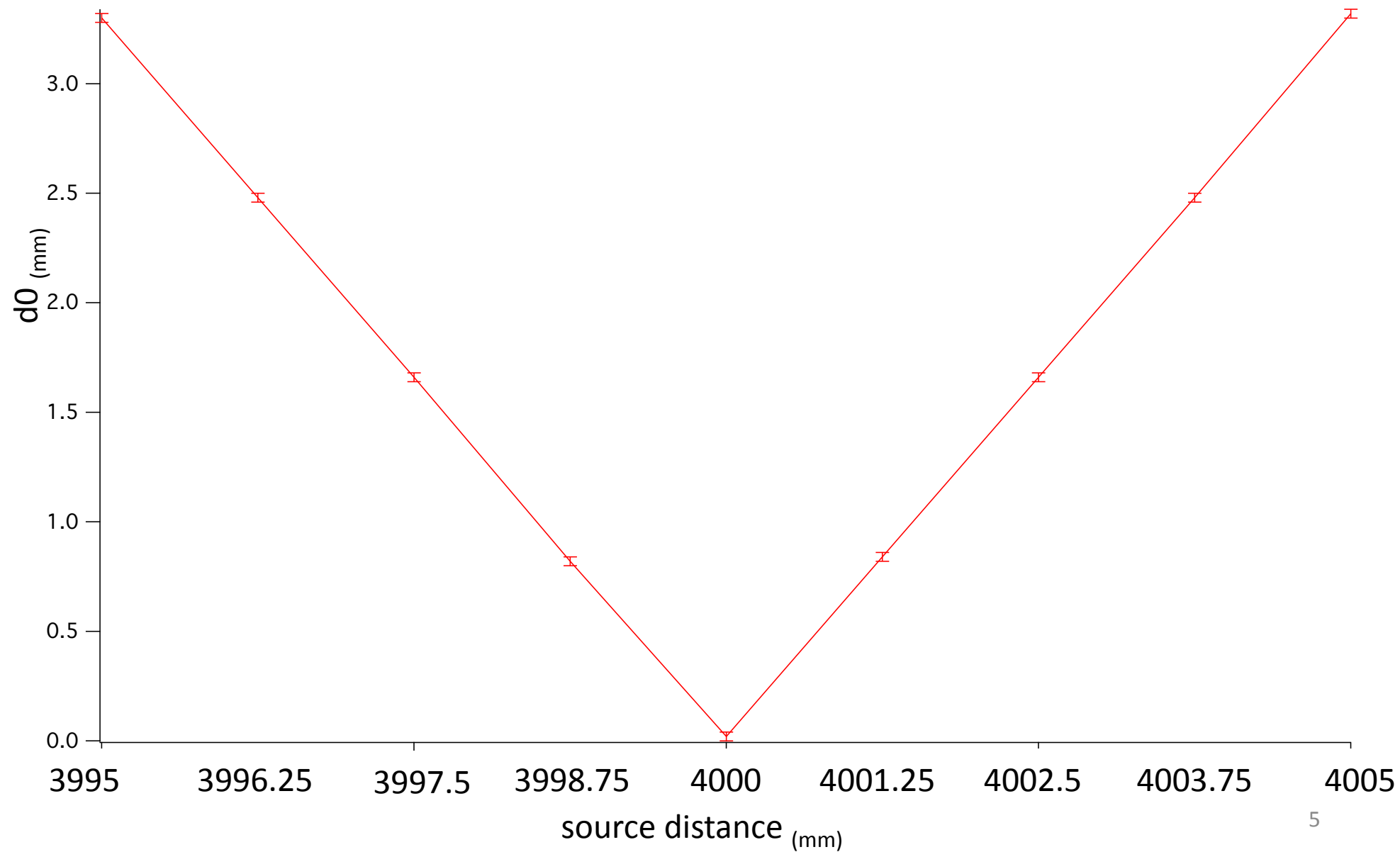


Configuration0

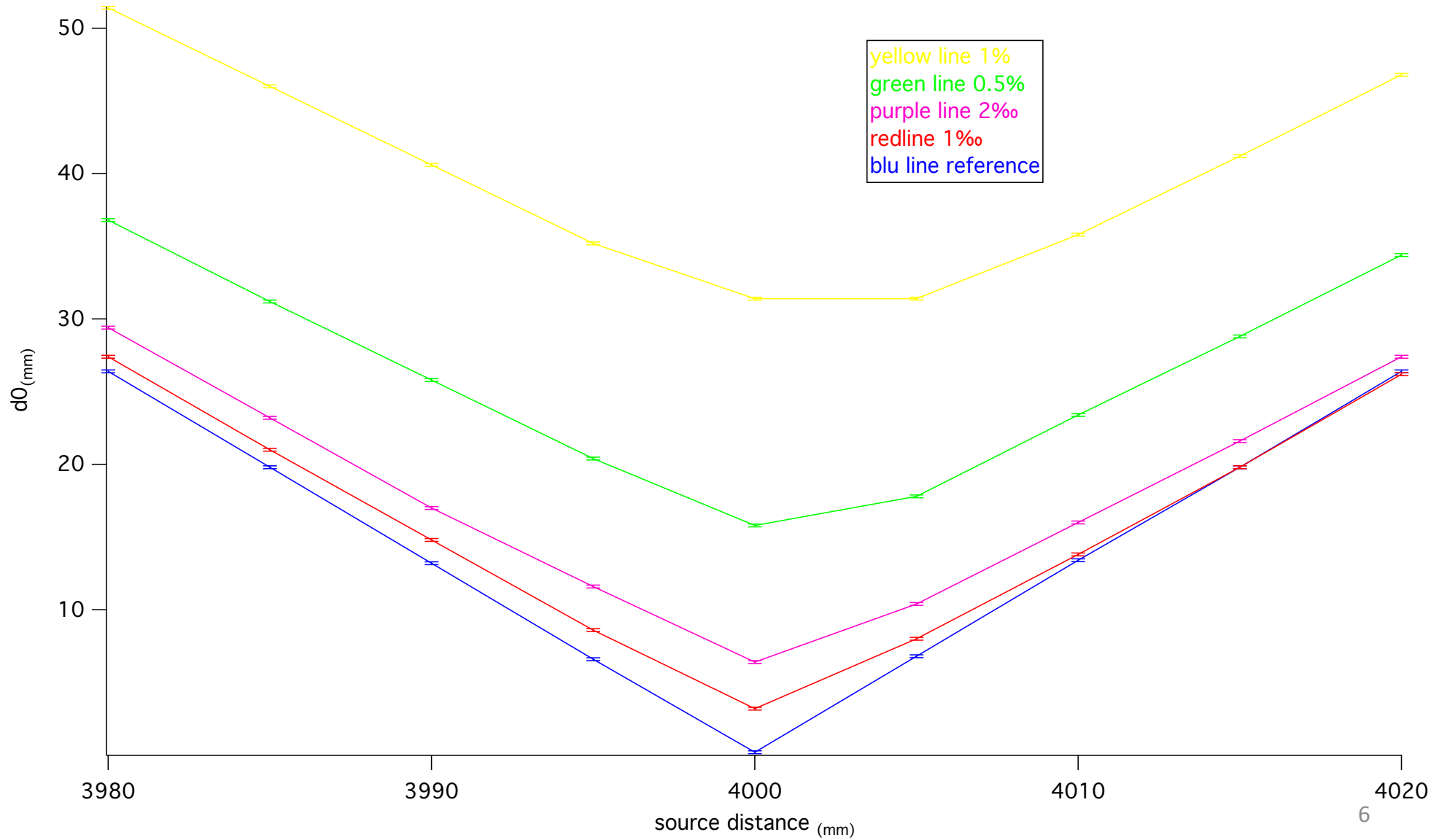
epsilon=2 source distance 4010 mm



Reference Configuration



Configuration 0



Configuration 0

