

# RICH Reconstruction 5.6.1

Compatible with Tag 5.6.1 (DNP production)

Cooked Run 4013 as reference

New RICH geometry (by Andrey – Giovanni)

Single component description

- first tracing logic optimization
- no real optical description

With time calibration

# RICH Photon Time

Tag 5.6.1

Run 4013

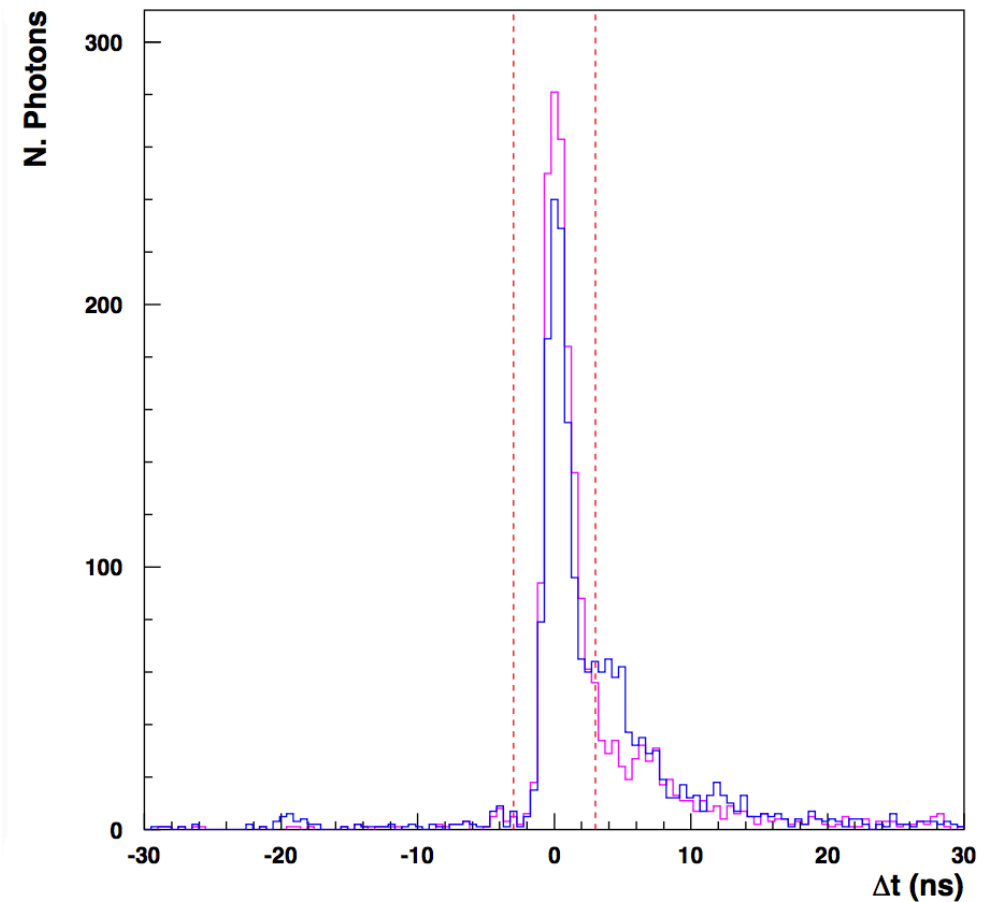
First 5000 events after with  
RICH offset calibration

No time-walk correction

-- analytic

-- traced (with reflections)

$\Delta t = (\text{calibrated}) \text{ RICH} - \text{CLAS time}$



# RICH Photon Time

Tag 5.6.1

Run 4013

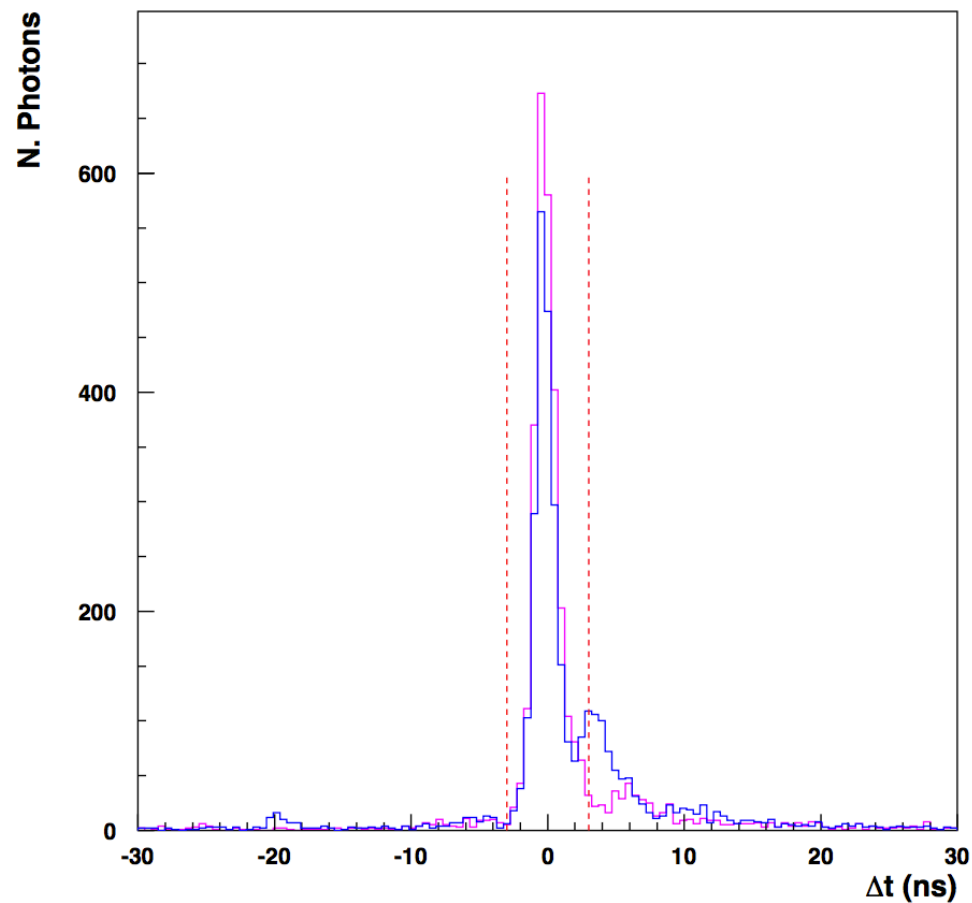
First 5000 events after with  
RICH offset calibration

With time-walk correction

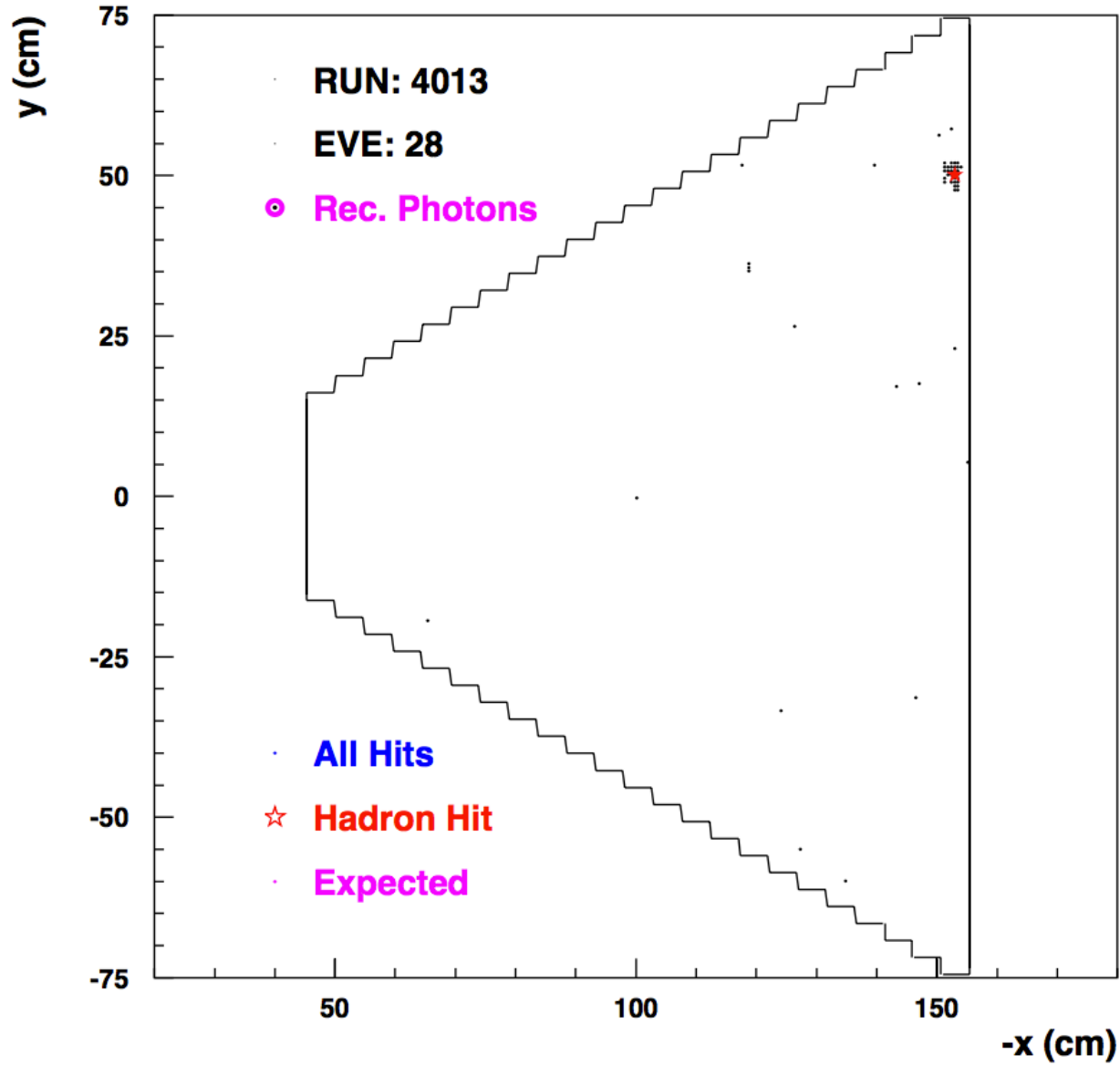
-- analytic

-- traced (with reflections)

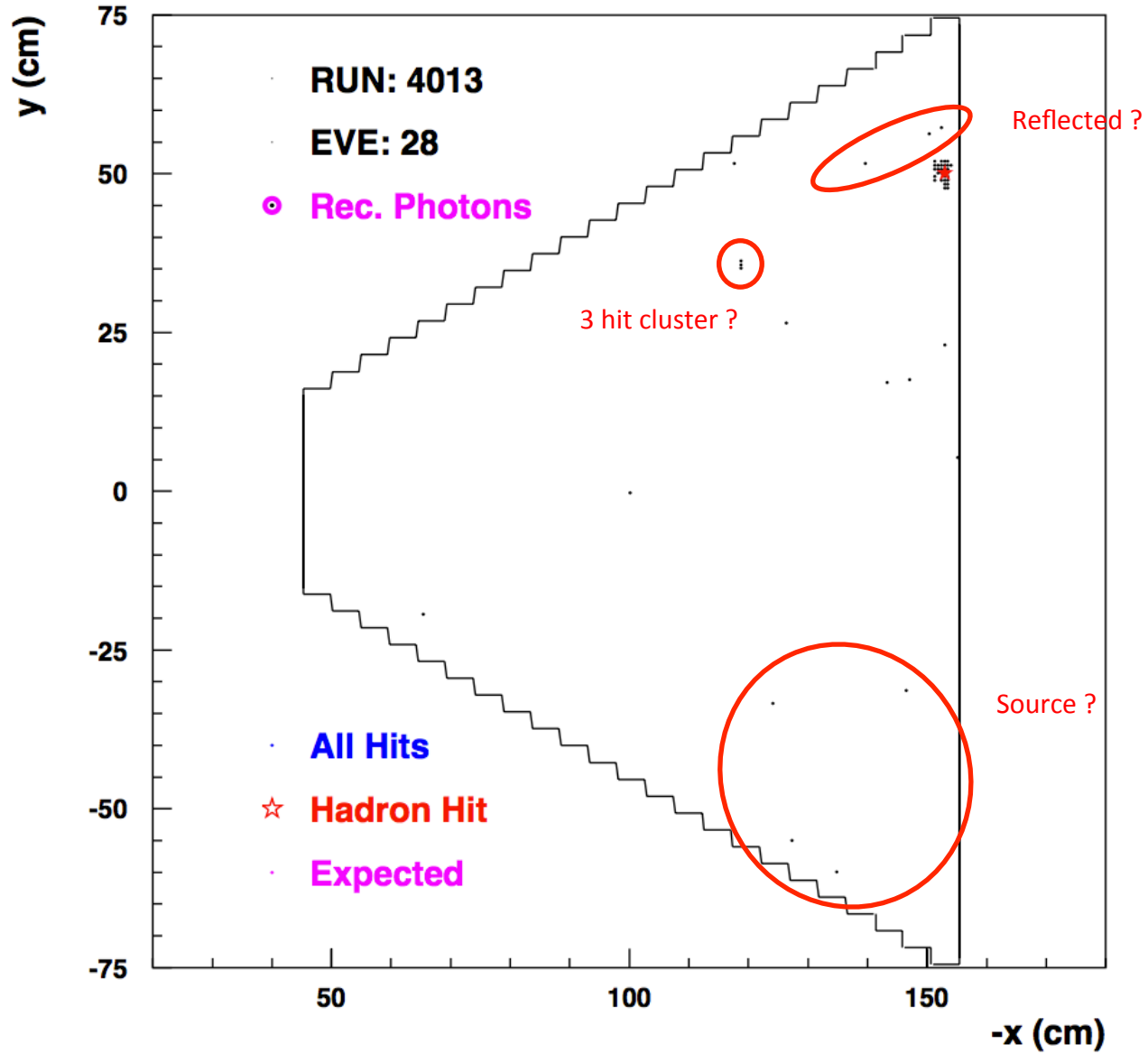
$\Delta t = (\text{calibrated}) \text{ RICH} - \text{CLAS time}$



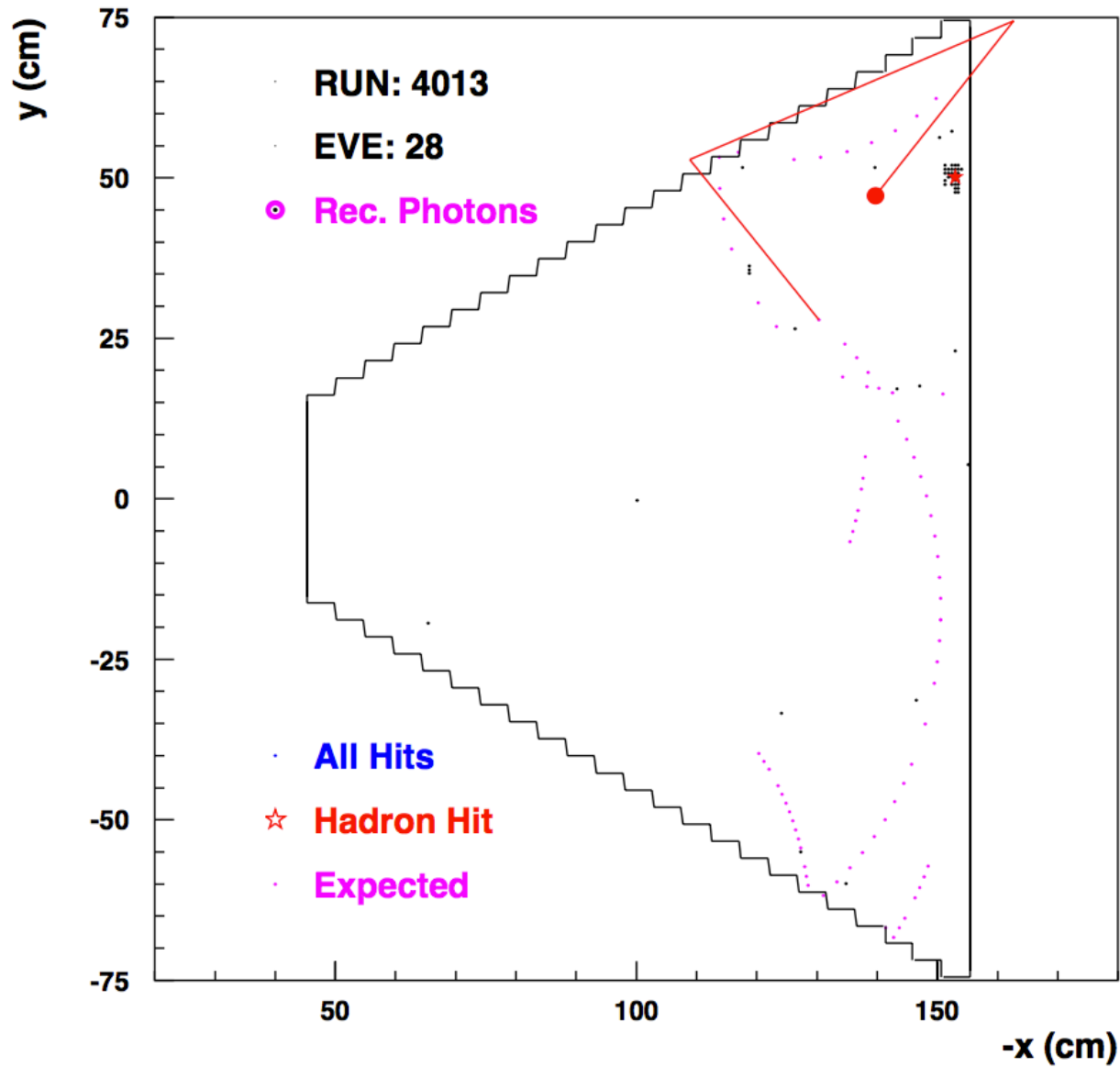
# RICH Event 28



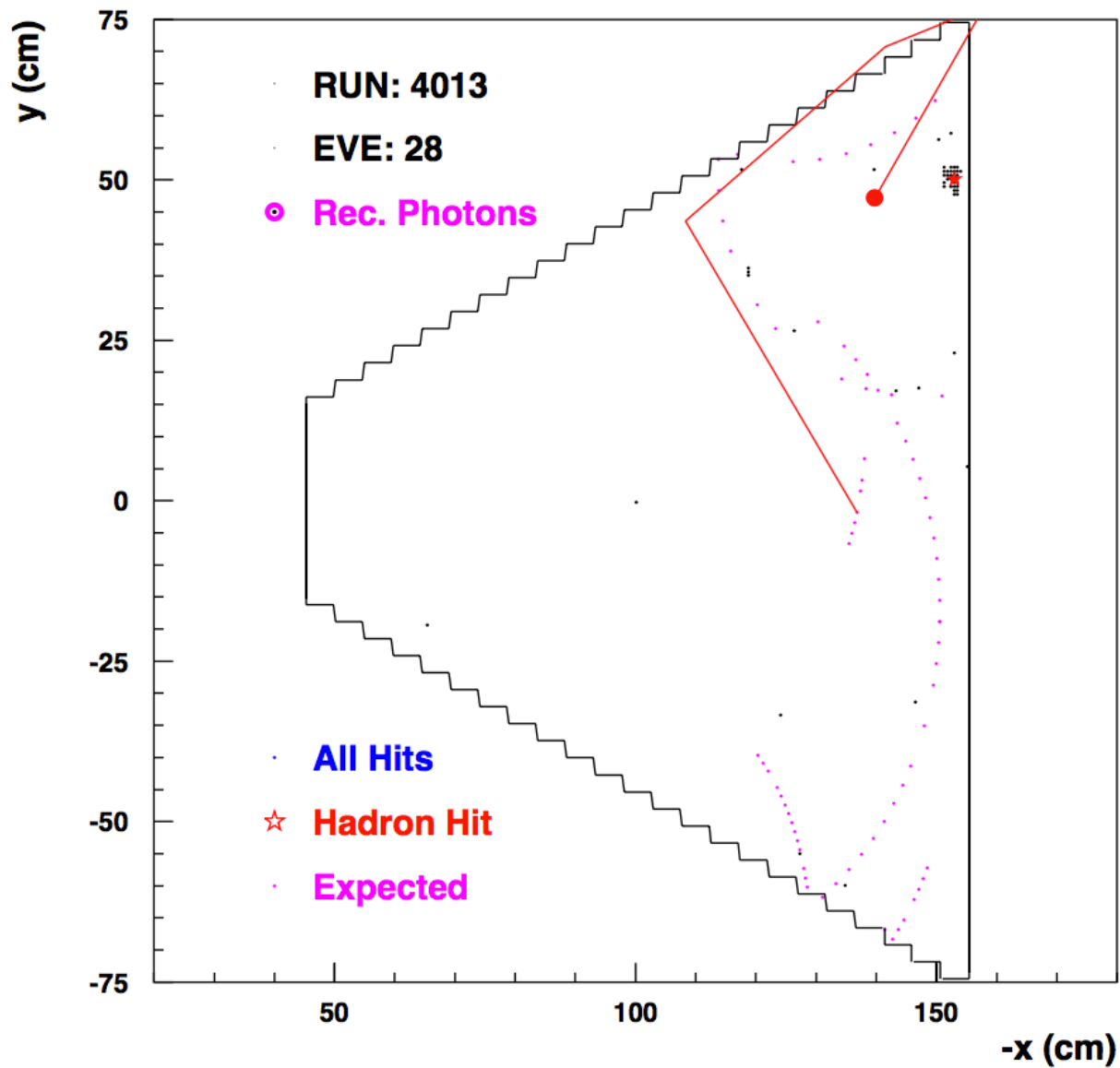
# RICH Event 28



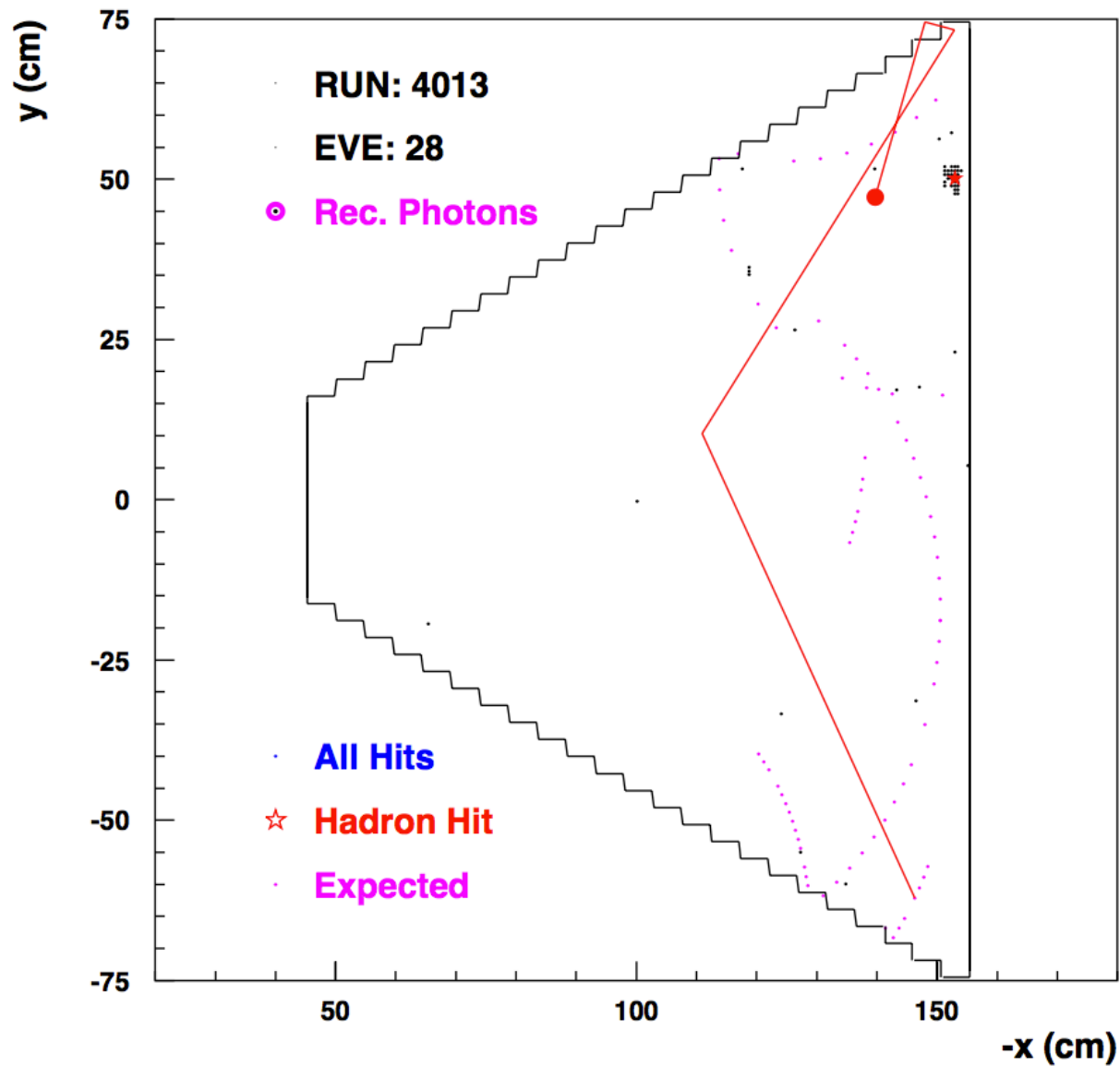
# RICH Event 28



# RICH Event 28

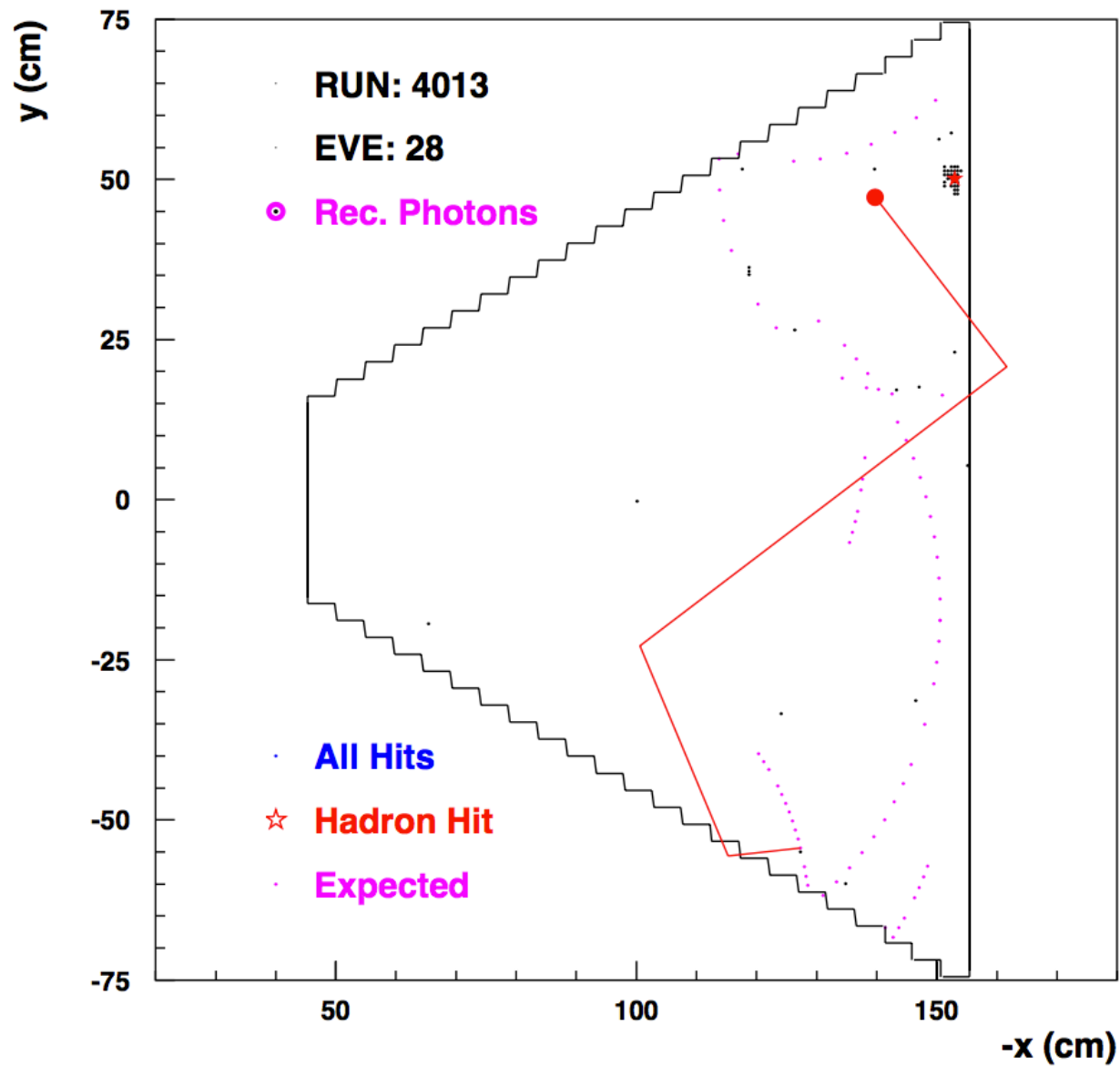


# RICH Event 28

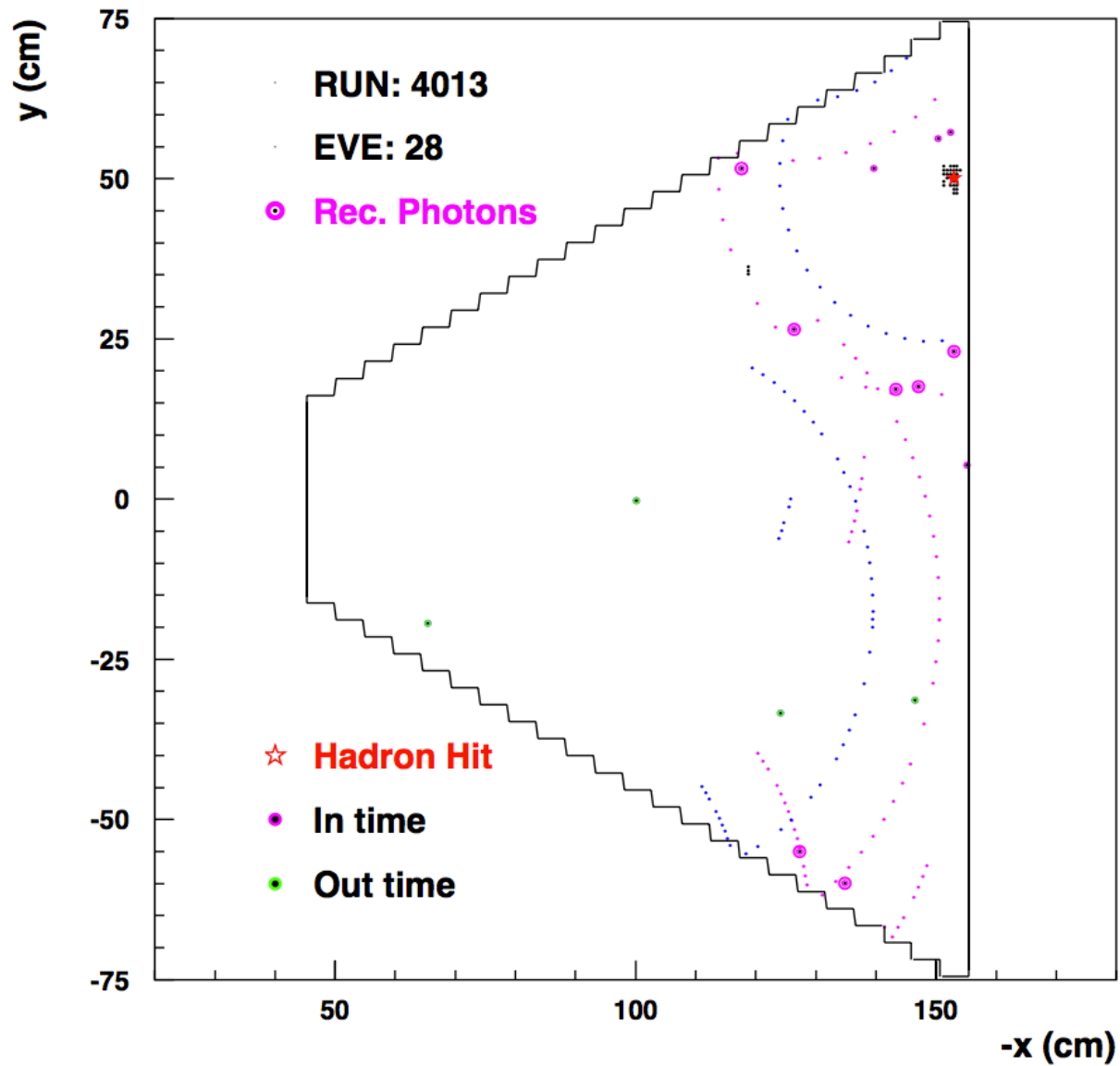




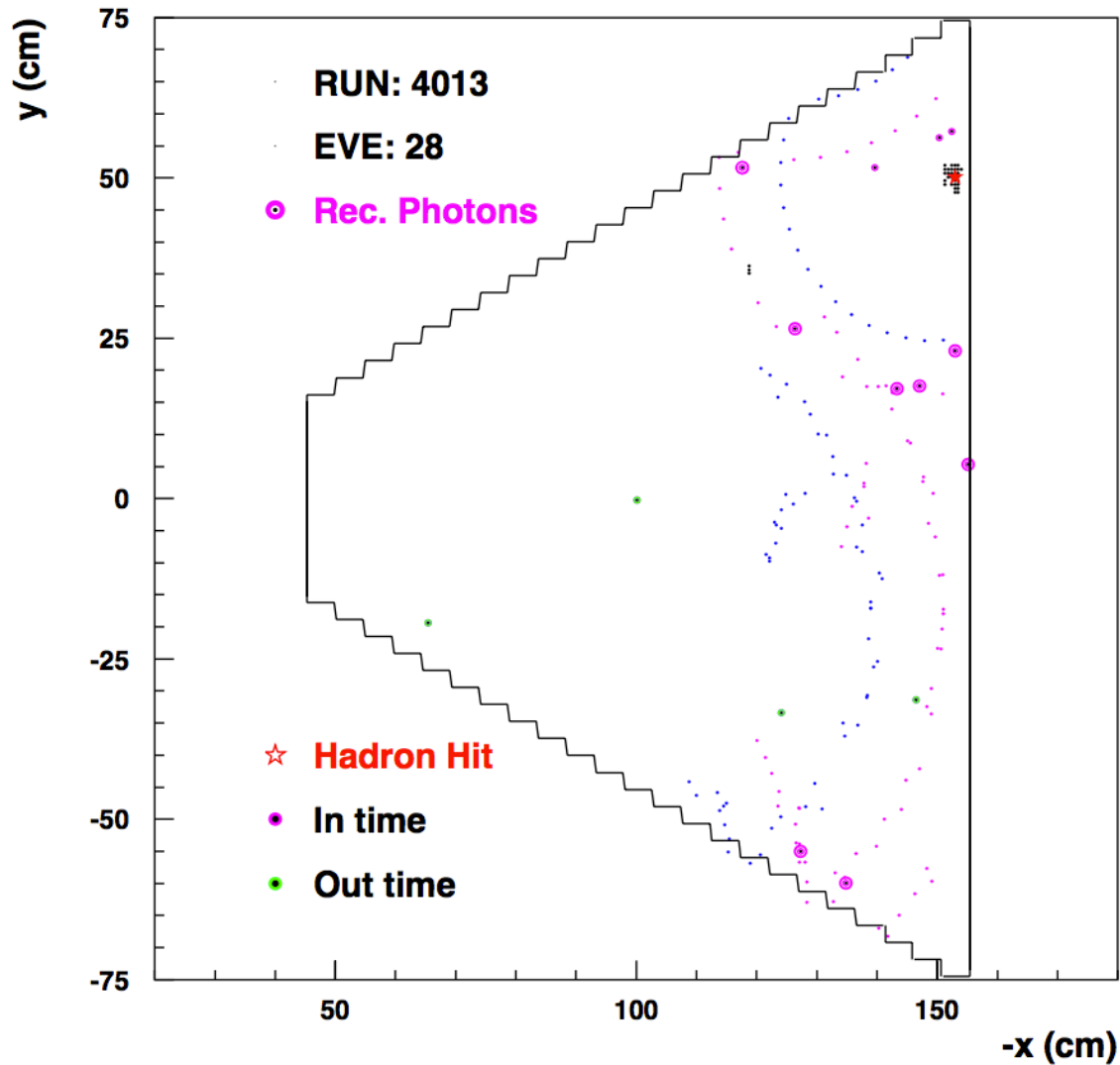
# RICH Event 28



# RICH Event 28



# RICH Reconstruction 5.6.1



# RICH Reconstruction 5.6.1

