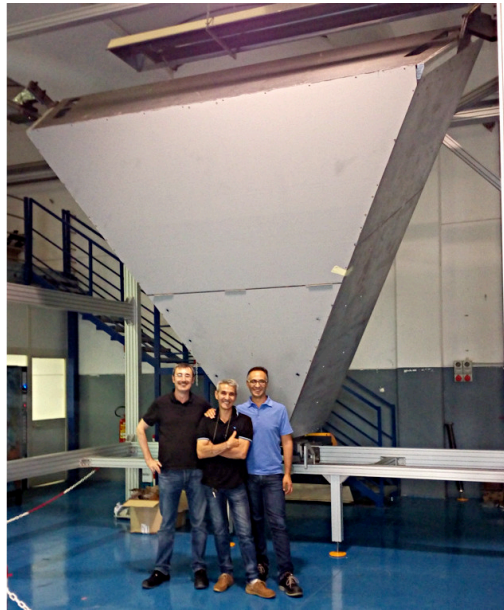


RICH designed to improve CLAS12 PID ( $\pi/K$ ) for momenta in range from 3 – 8 GeV



### Mechanics:

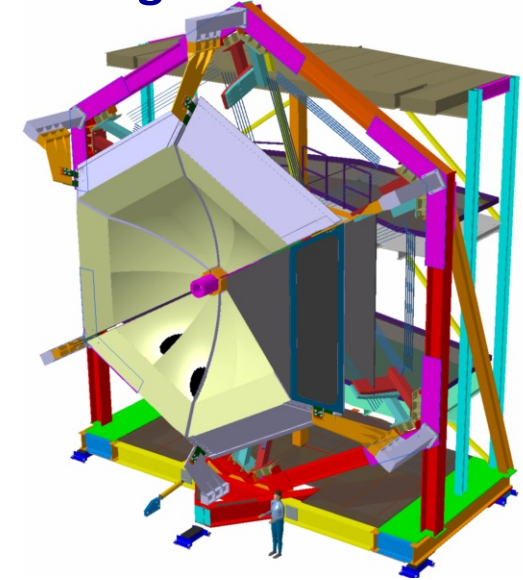
- Module structure completed
- Pre-assembling test done
- Delivery to JLab in Nov16

### Planar mirrors:

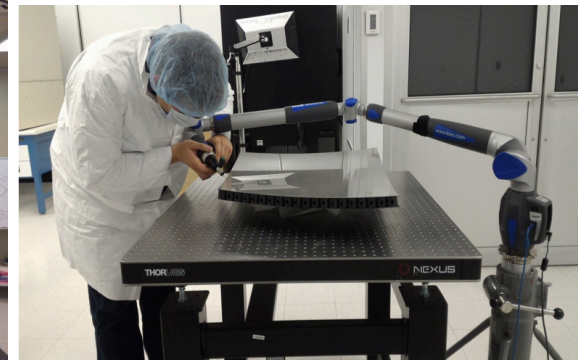
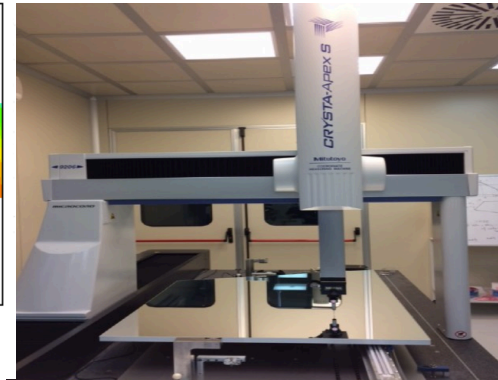
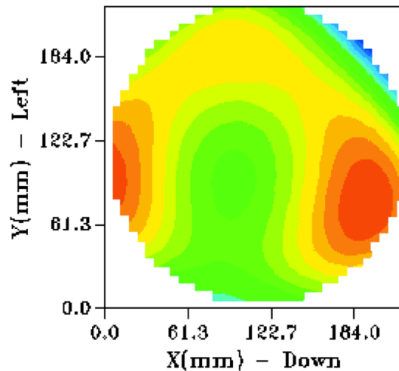
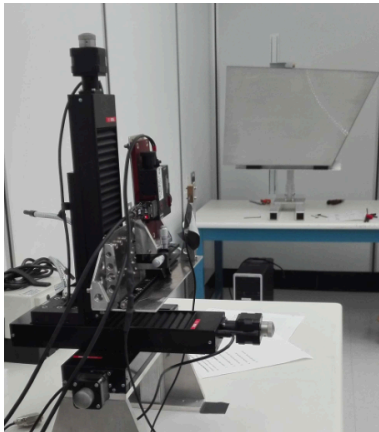
- 2/5 lateral mirror accepted
- 1/2 front mirror in production

### Spherical mirrors:

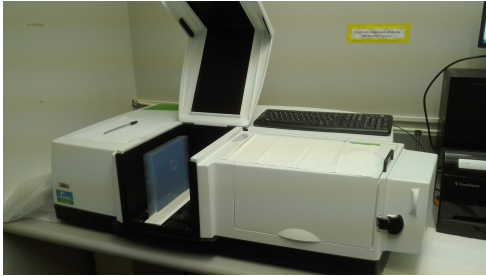
- All delivered and tested
- Working on support structure



**Schedule: Installation in CLAS12 - 9/2017**



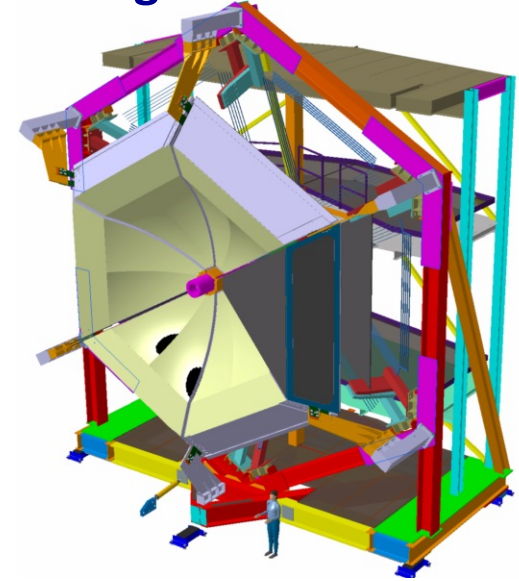
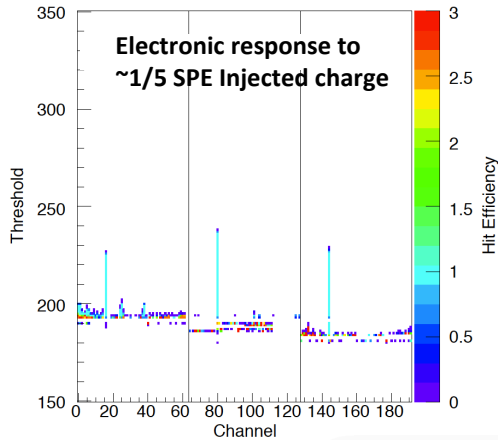
RICH designed to improve CLAS12 PID ( $\pi/K$ ) for momenta in range from 3 – 8 GeV



**Aerogel:**  
- > 50 % of 3cm delivered and tested  
- 2cm layer production started

**MA-PMTs:**  
- All delivered and tested  
- Data on CCDB database

**Electronics:**  
- Revised to achieve  
    < 5 % SPE sensitivity  
- Production ongoing



**Schedule: Installation  
in CLAS12 - 9/2017**

