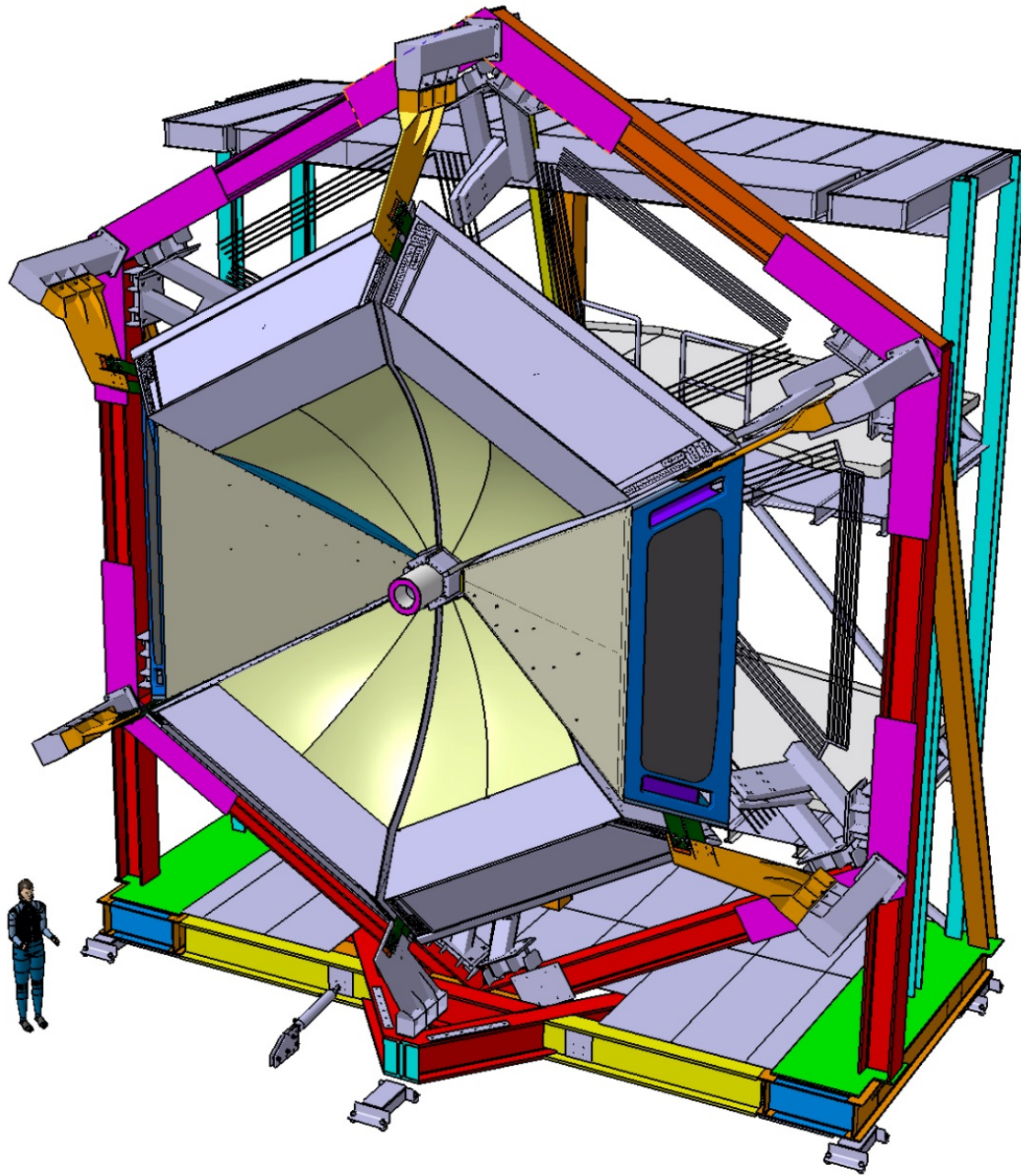
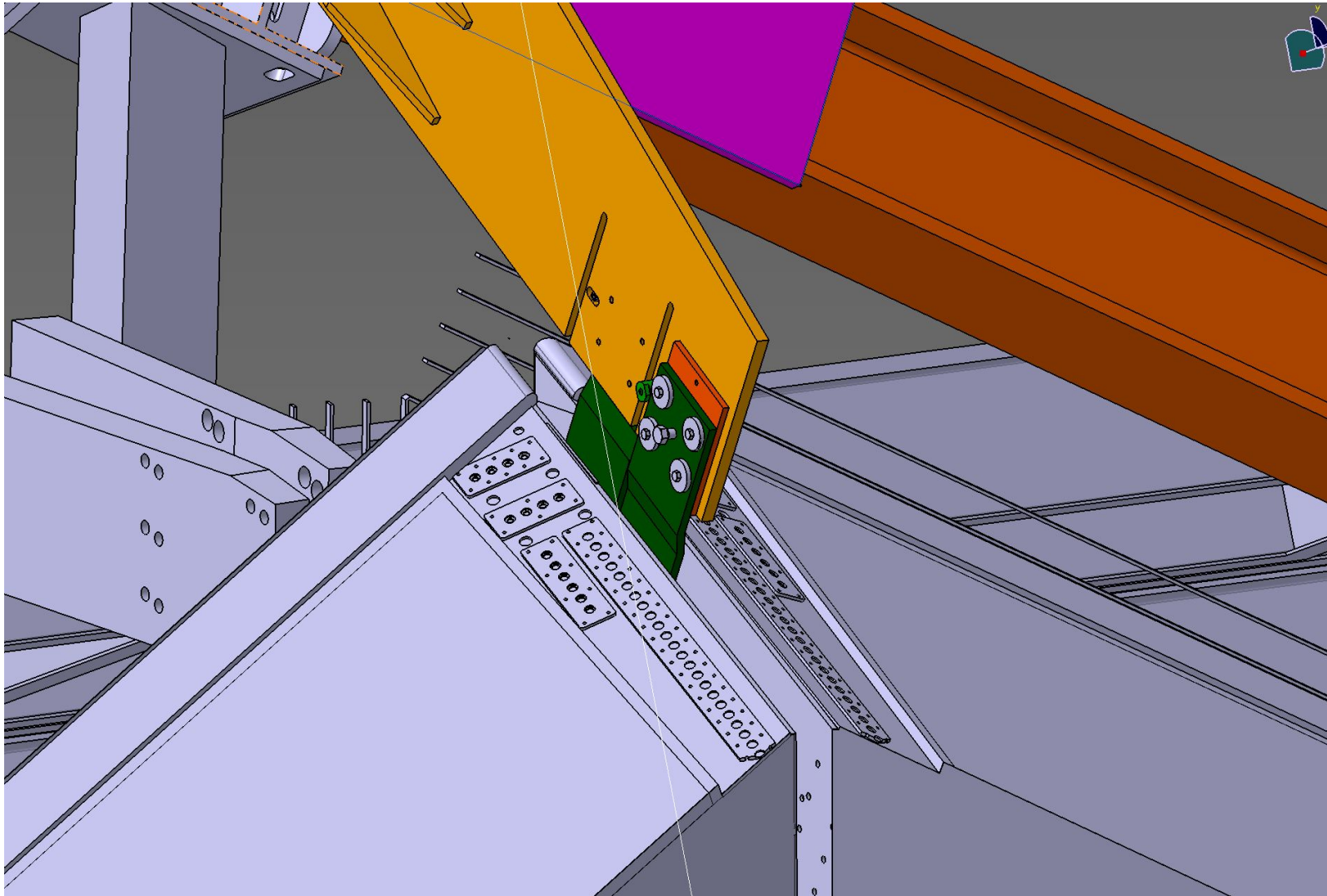


CLAS12-RICH Status-Report

February 27th 2015



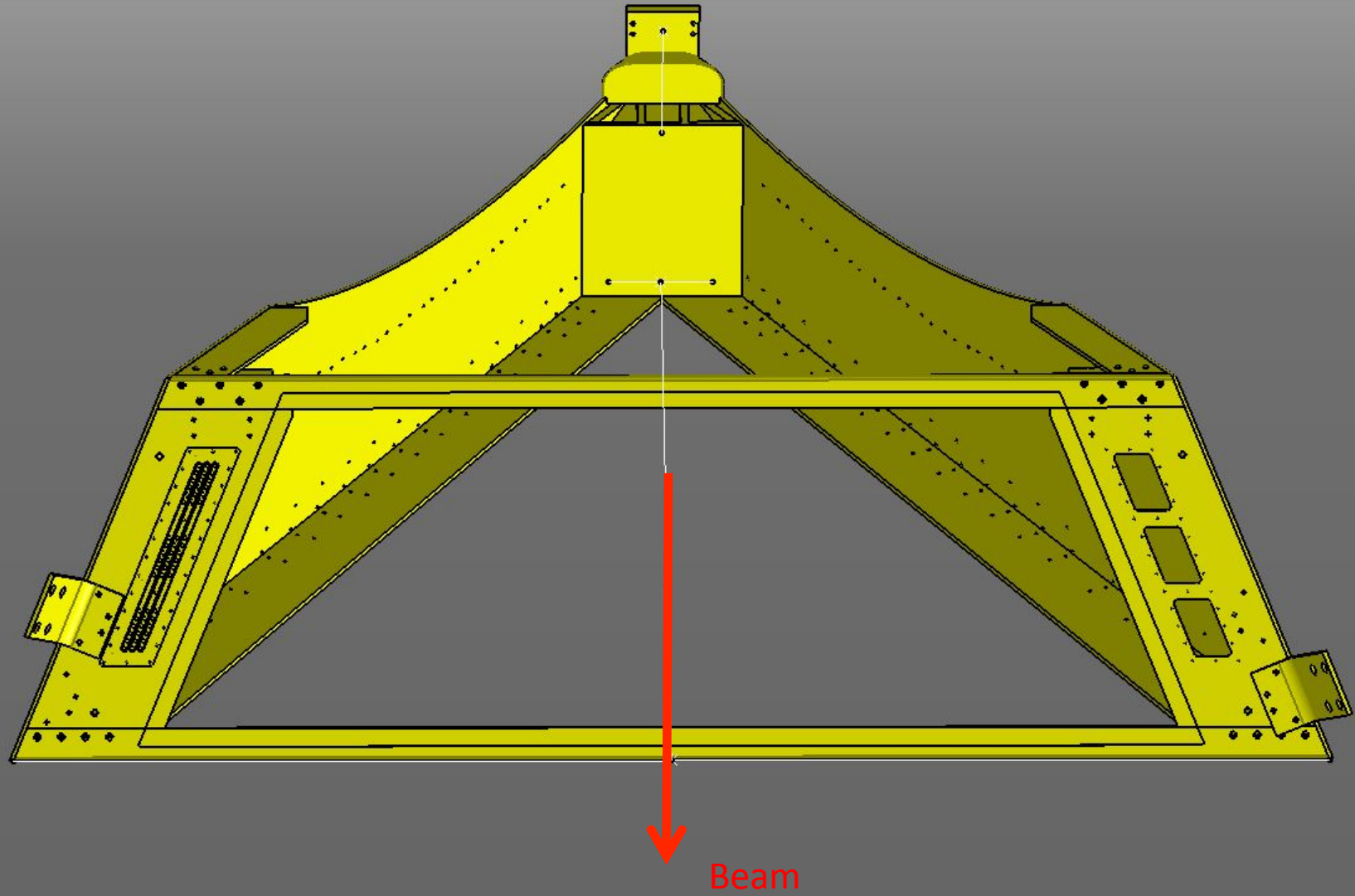
LTCC Holders @ CLAS 6



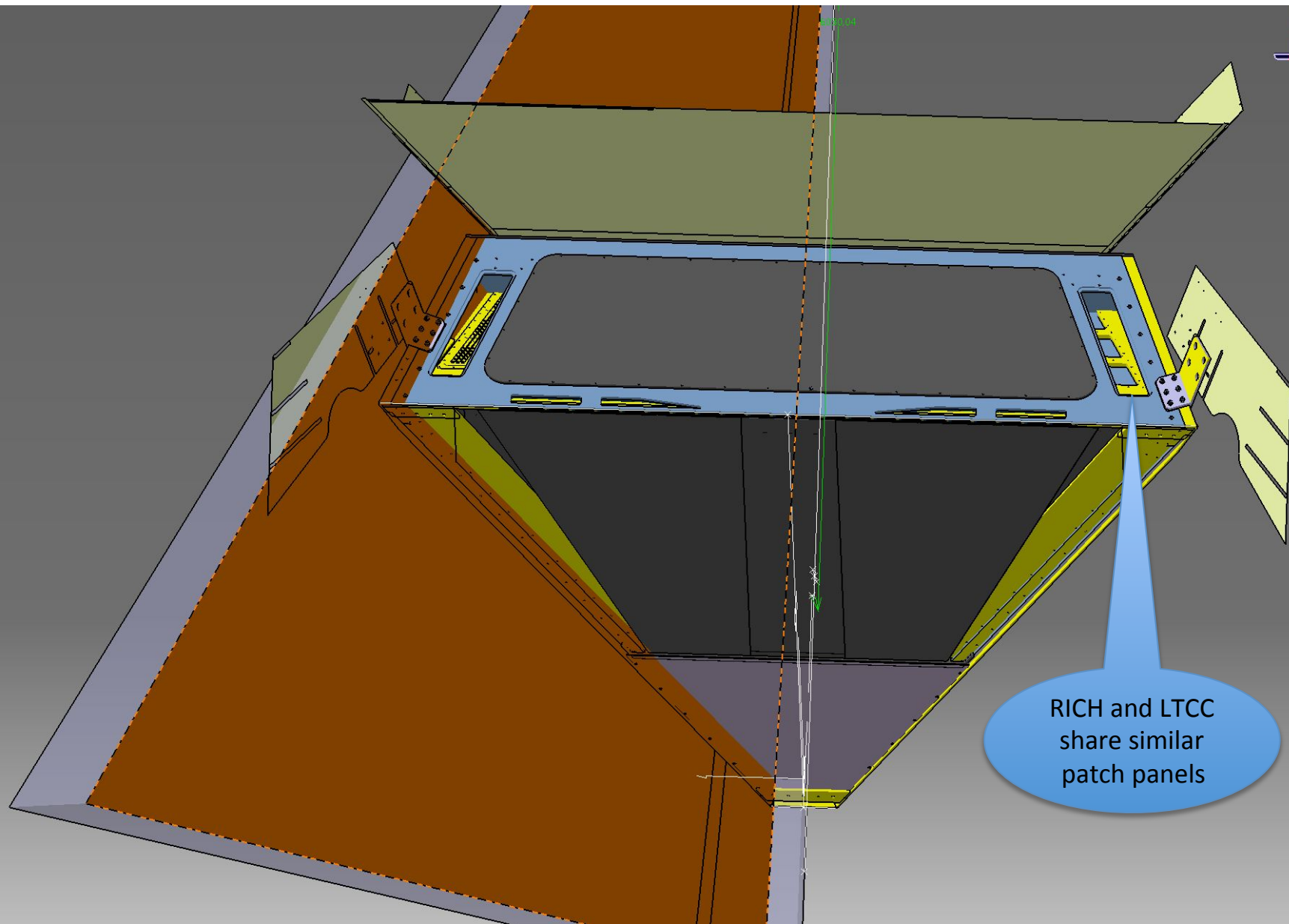
LTCC Panels @ CLAS6



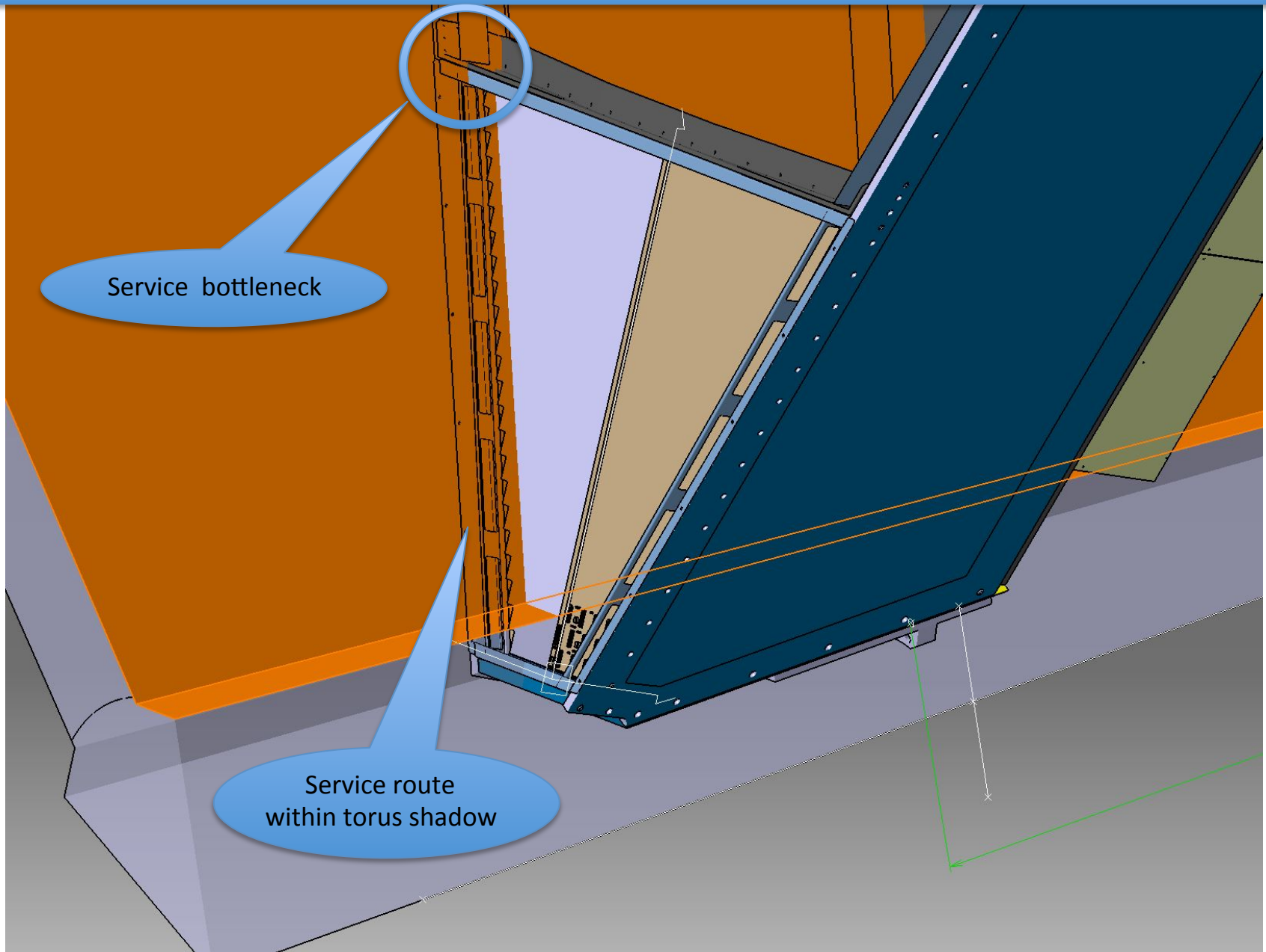
LTCC New Case @ CLAS12



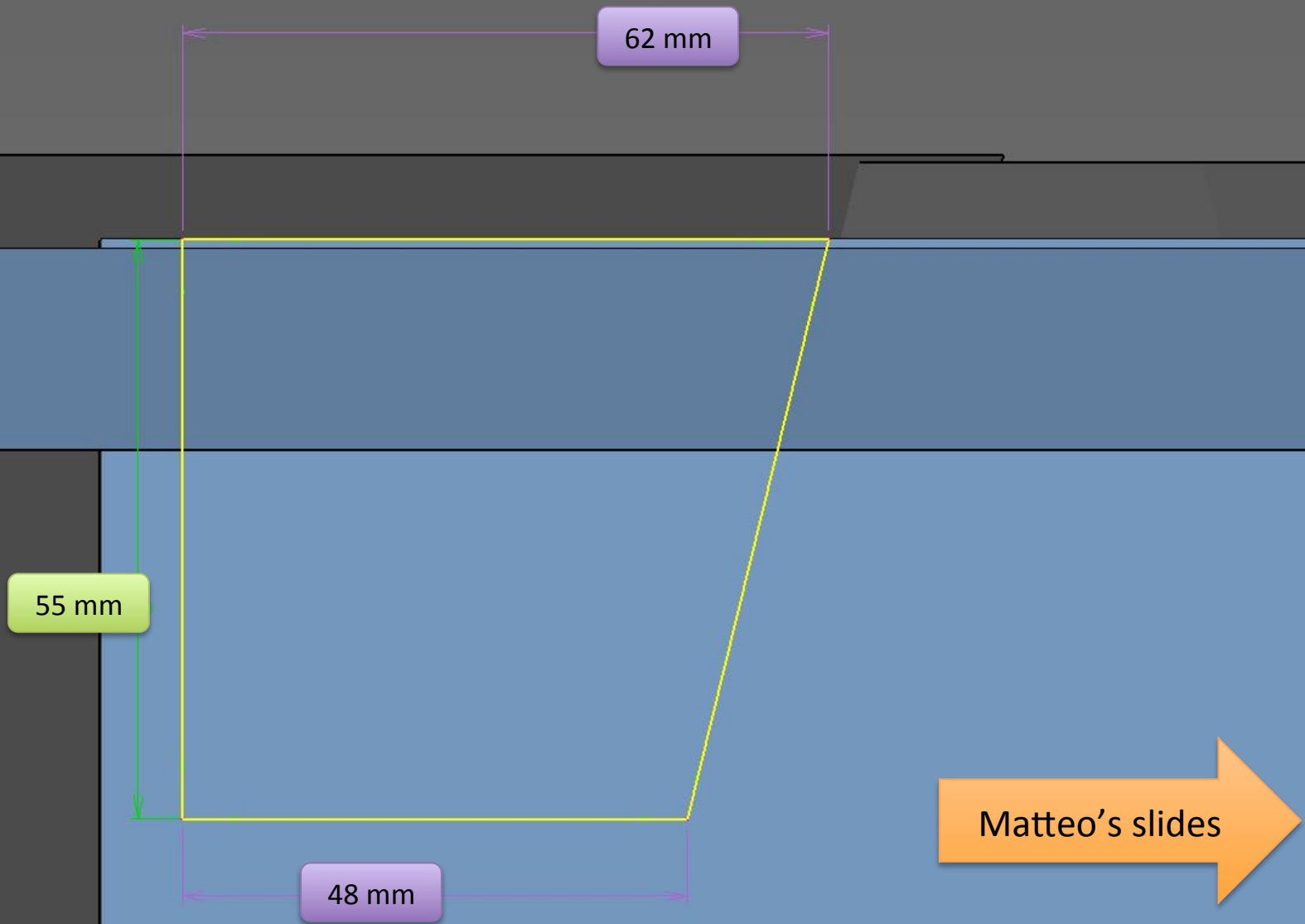
TORUS Shadow: Holders & Panels



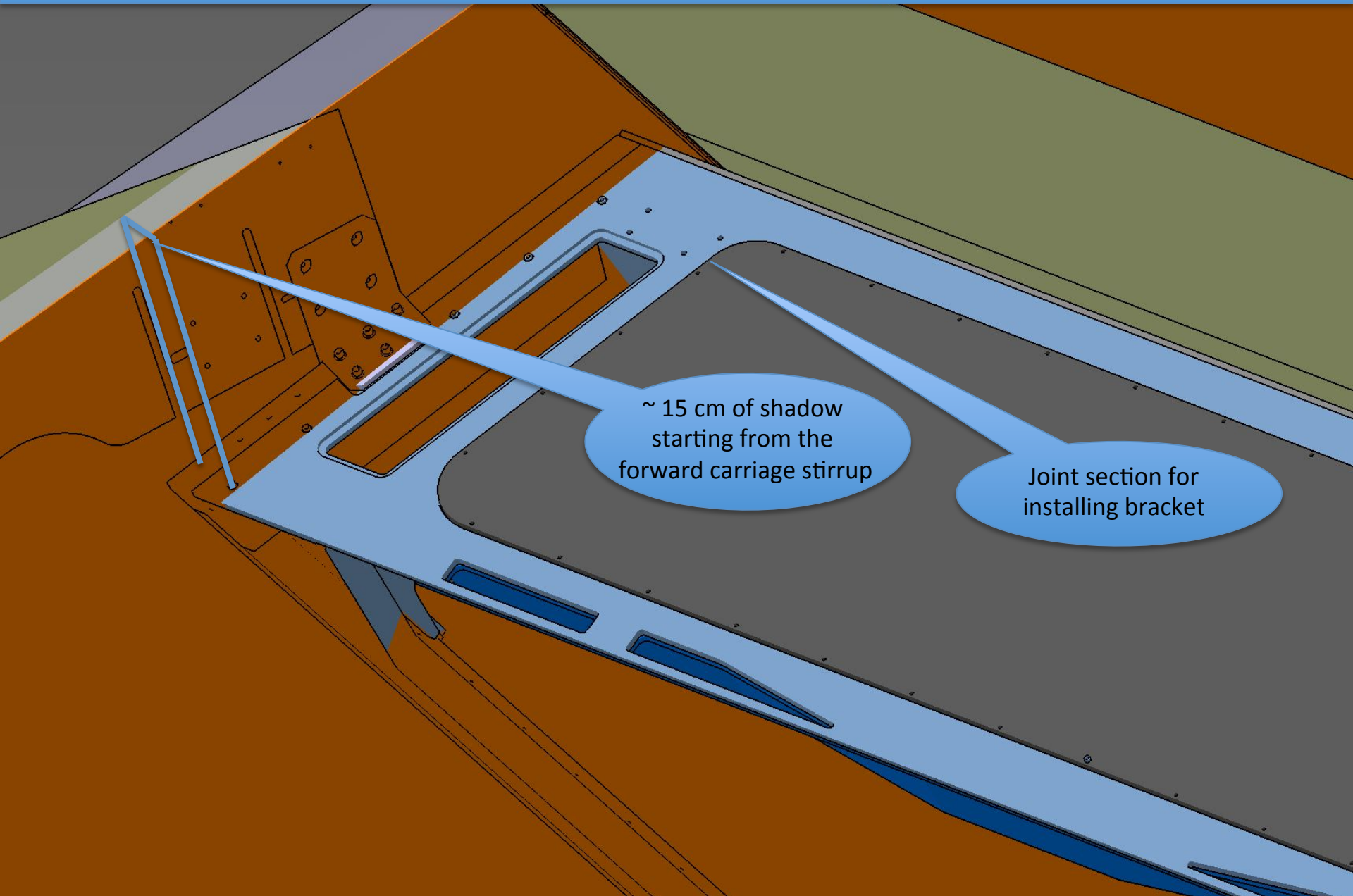
TORUS Shadow: Electronic Panel



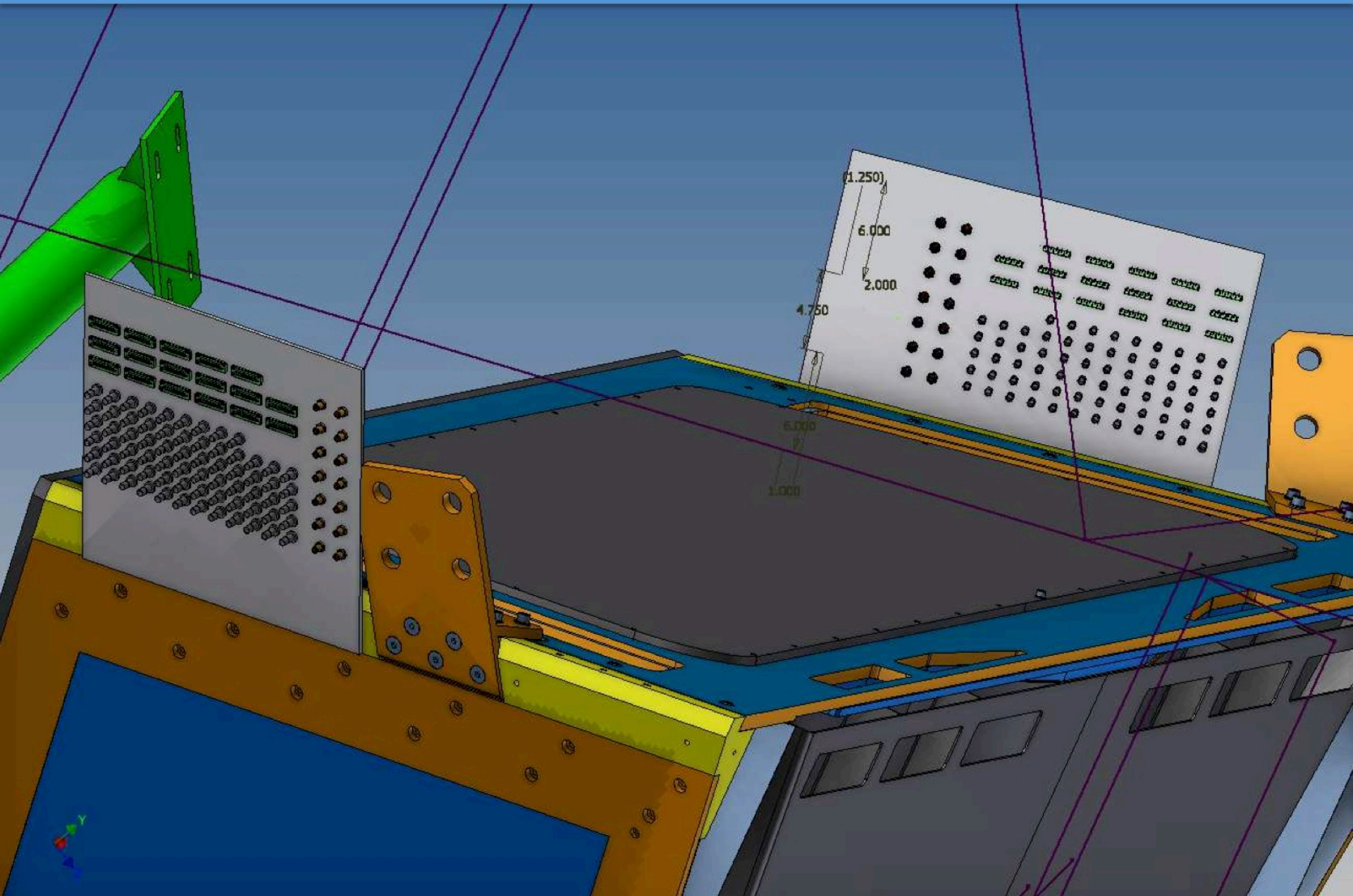
Services Bottleneck



TORUS Shadow: Patch-panel



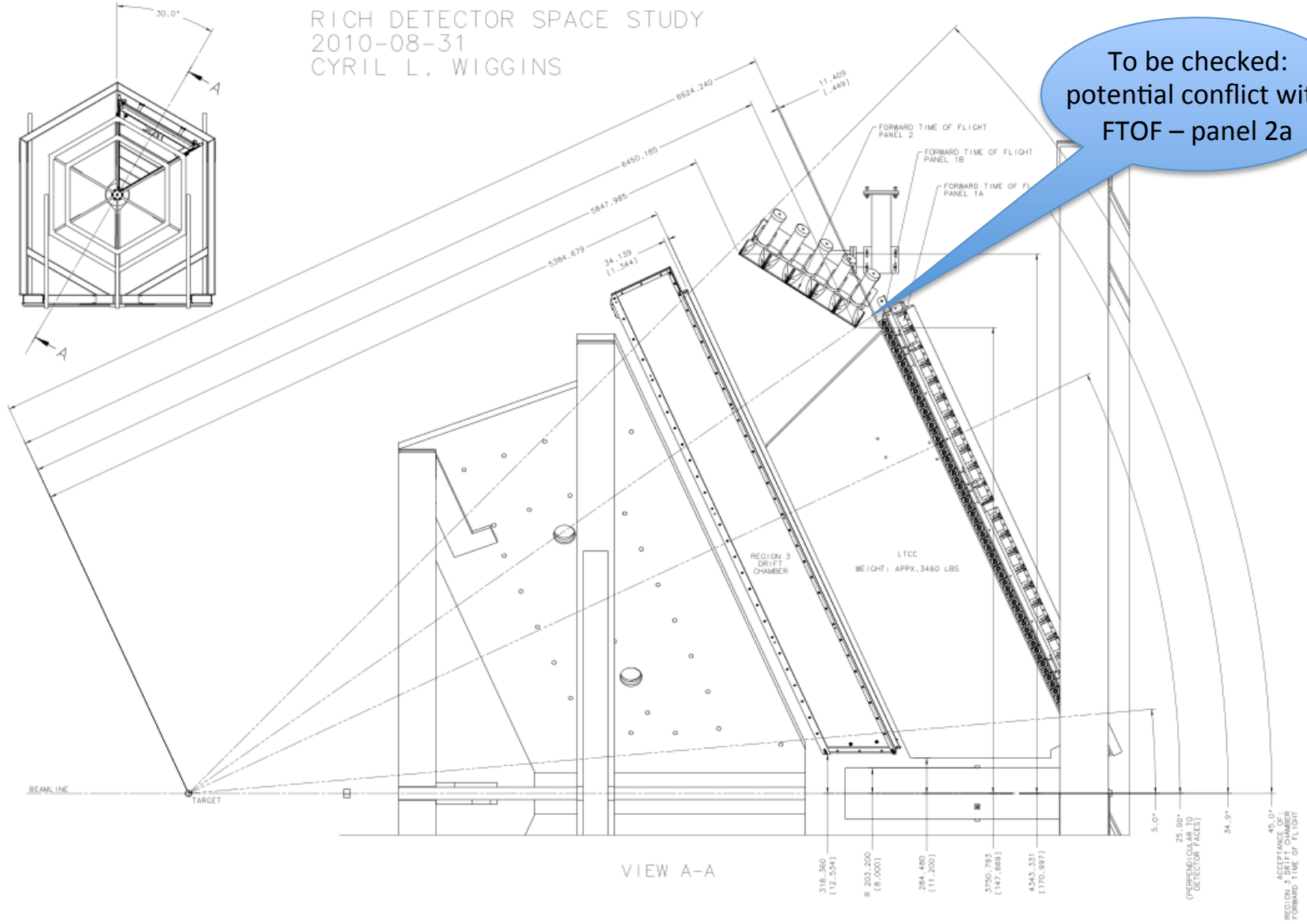
TORUS Shadow: Top Panel



FOTF Panel-2a Encumbrance

RICH DETECTOR SPACE STUDY
2010-08-31
CYRIL L. WIGGINS

To be checked:
potential conflict with
FTOF – panel 2a



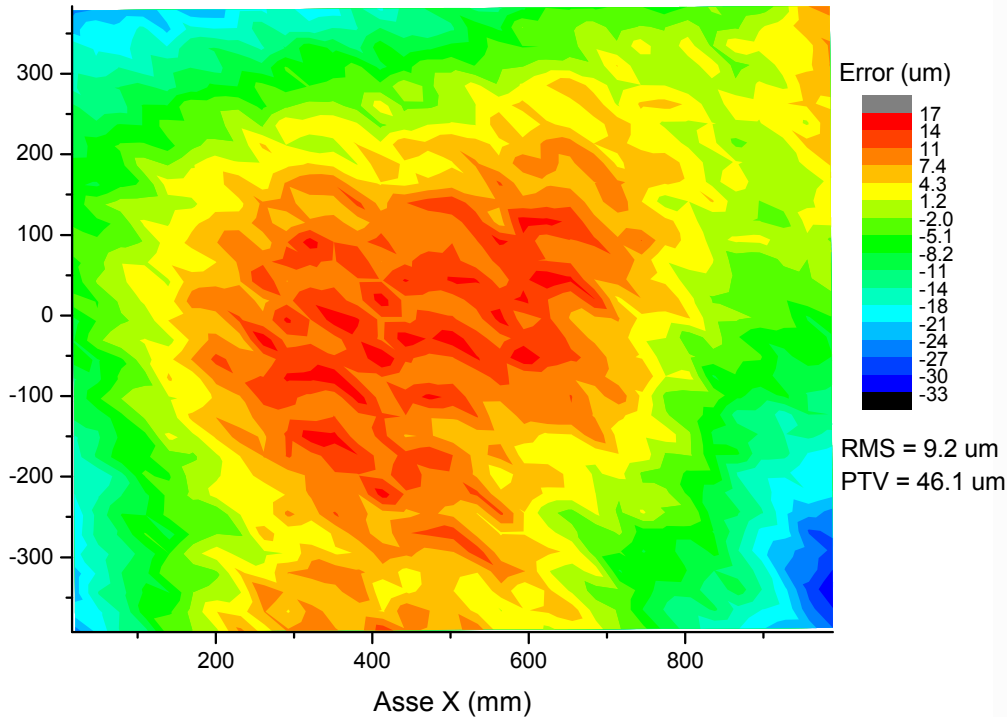
Media-Lario Mirror

Peak-to-valley similar to the mandrel
but σ_θ is acceptable:

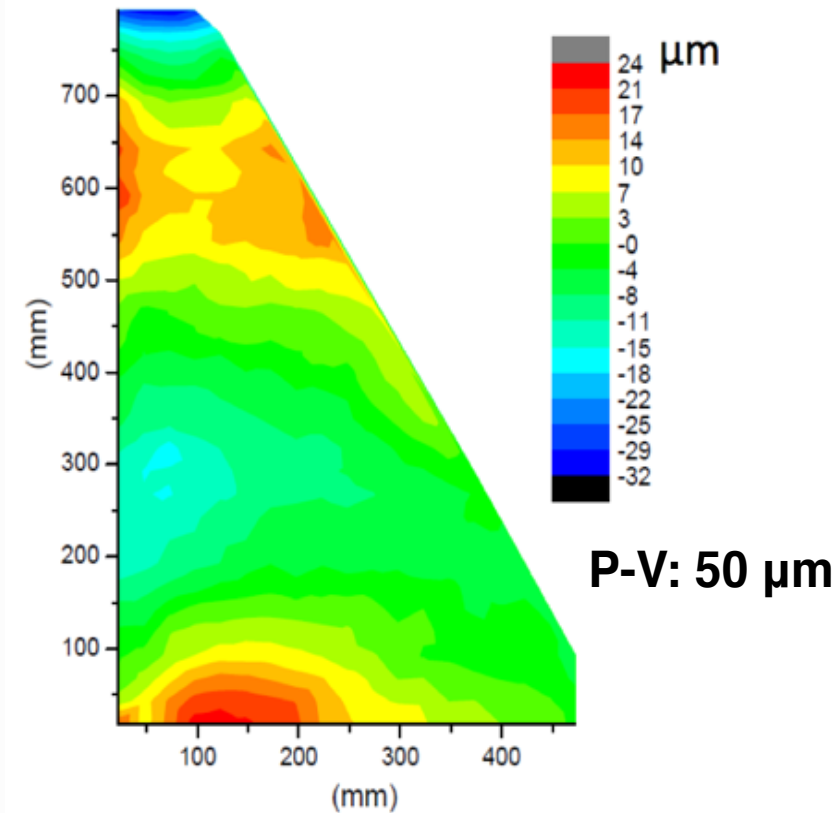
$$\sigma_\theta = 0.1 \text{ mrad}$$

do we need to improve the mandrel ?

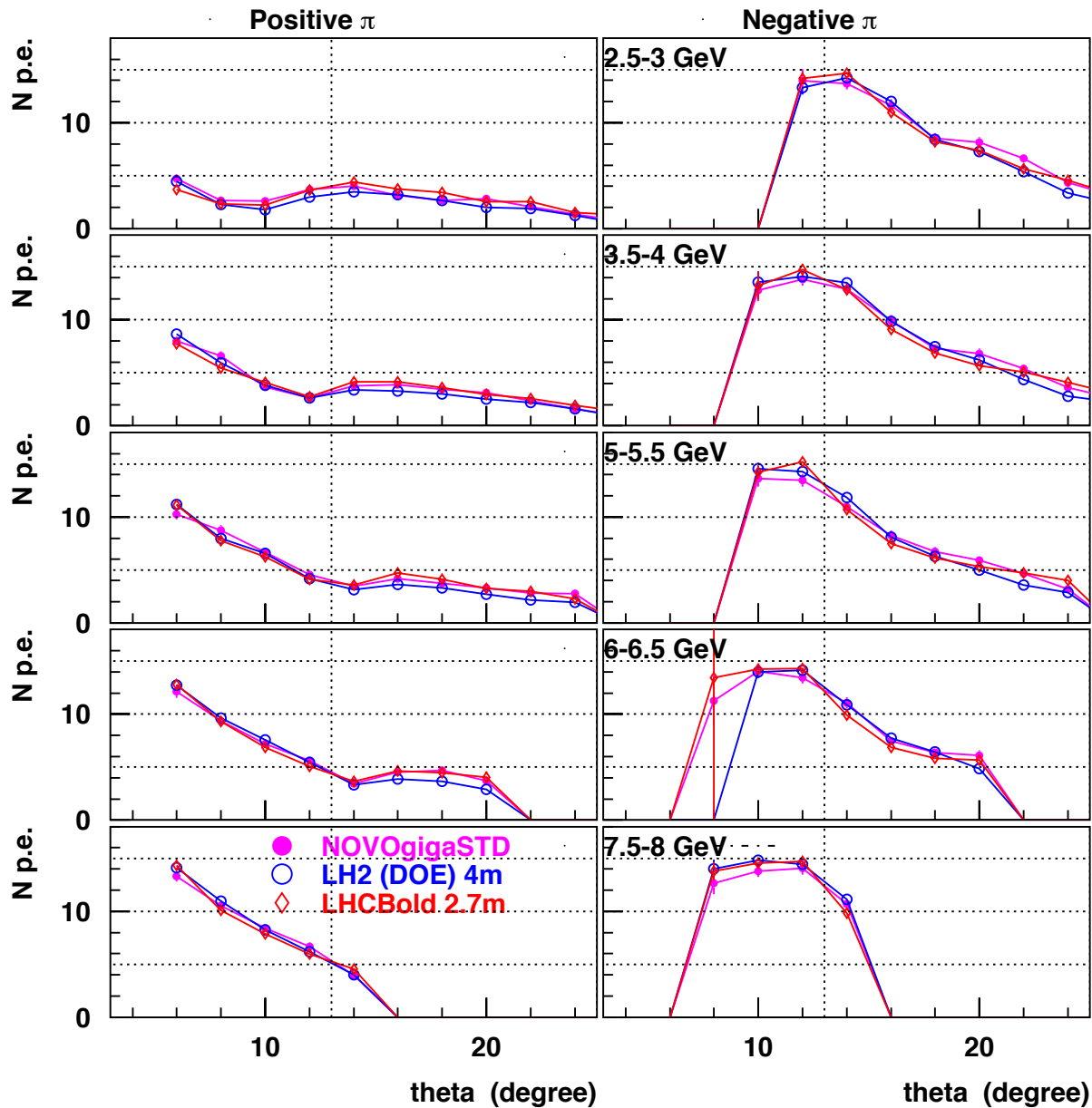
Master - RICH - Measurement 06/03/2014



P-V: 46 μm



RICH N p.e. vs mirror radius

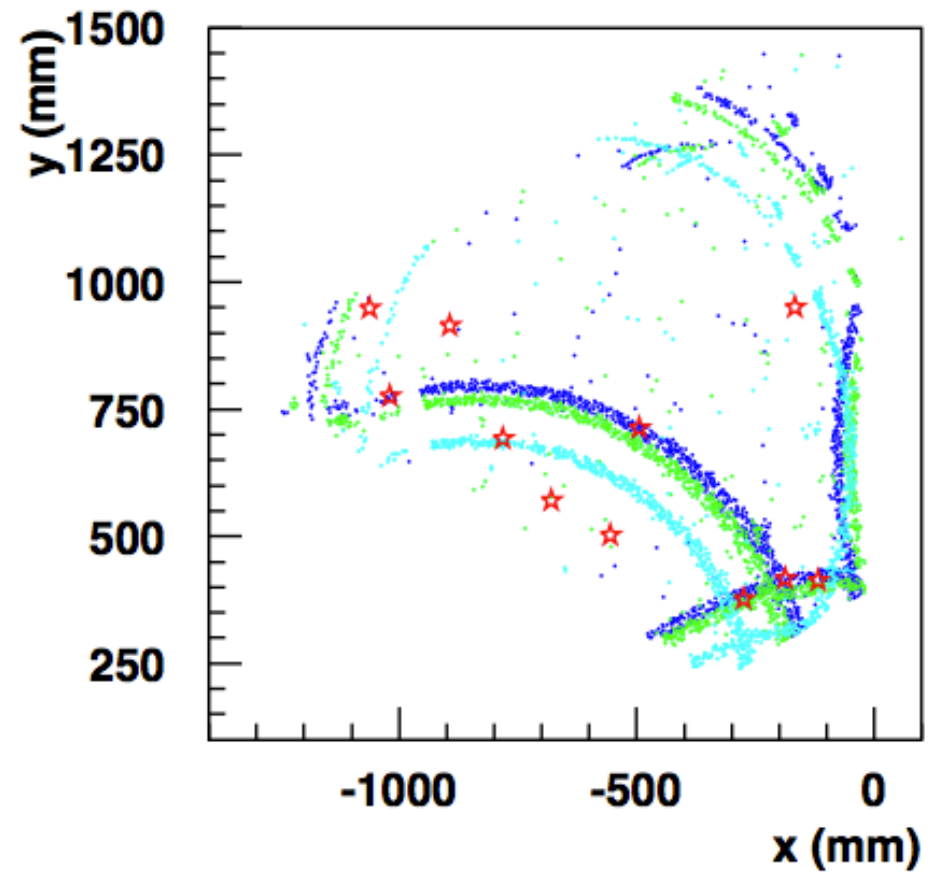
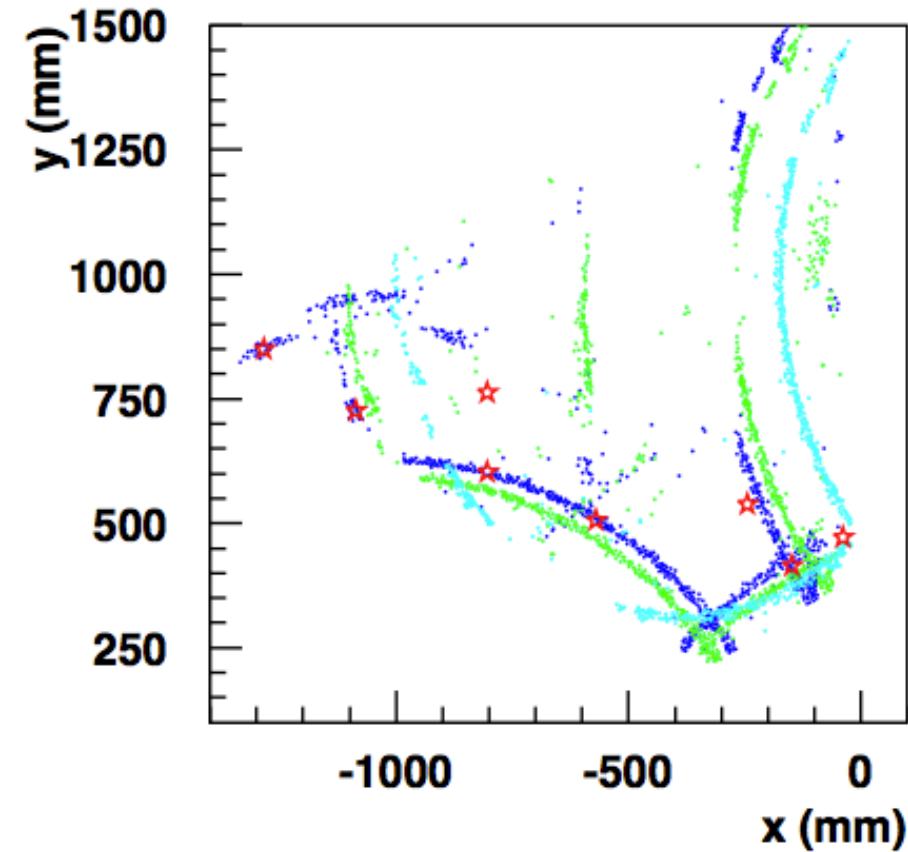


RICH Likelihood vs mirror radius

5 GeV/c positive charged particle at 22 degrees

4 m radius

2.7 m radius



RICH Likelihood vs mirror radius (in-bending)

4 m radius

2.7 m radius

