

CLAS12-RICH

May 29th 2015

Internal Review 24 (afternoon, open) and 25 June 2015, LNF

* no meeting during CLAS coll. Week *

Middle-term review planned for the second week of October

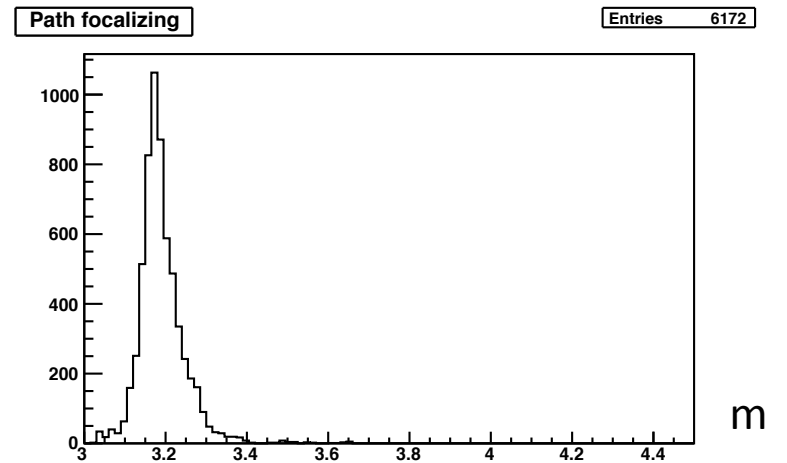
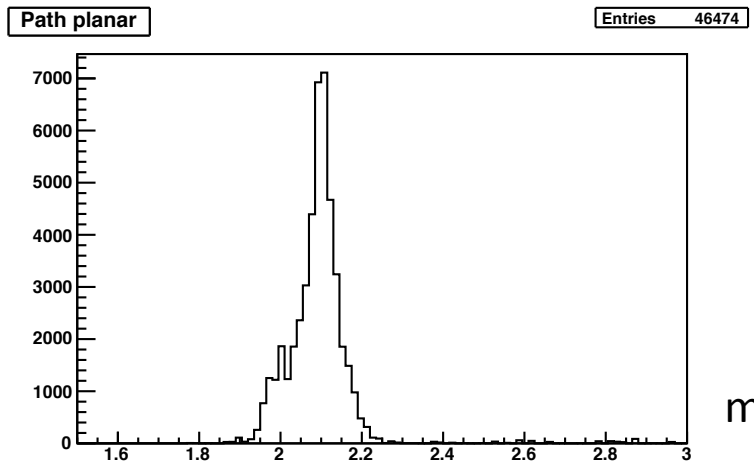
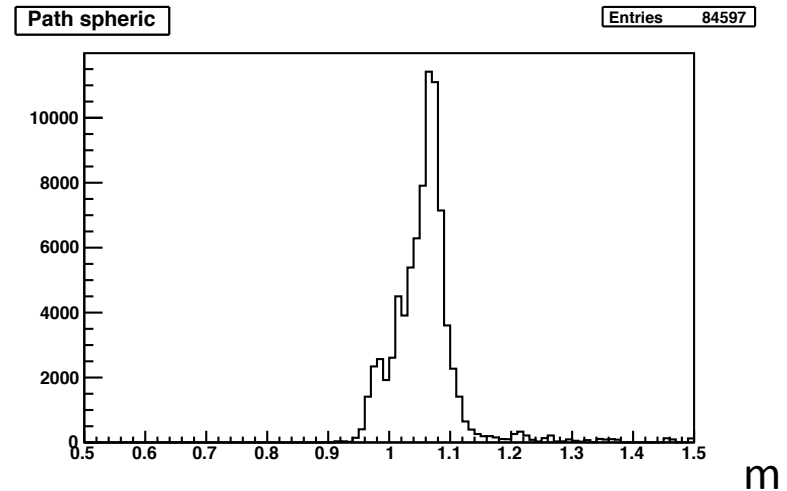
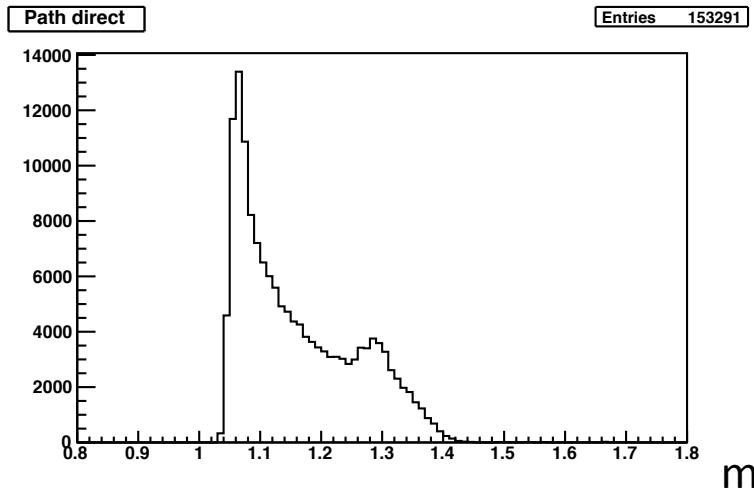
Aerogel Characterization

		Novosibirsk	Fe re-fit	Ferrara 1	Ferrara 2
	Date Meas.	28 Dec 2014	28 Dec 2014	16 Apr 2015 after delivery	17 Apr 15 after -1day drying
397m10	Lsc (mm)	49.2 ± 1.5	48.46 ± 0.50	45.59 ± 0.38	45.99 ± 0.39
	Abs (%)	97.7 ± 0.9	98.06 ± 0.61	95.60 ± 0.98	95.60 ± 1.06
	Date Meas.	20 Jan 2015		14 Apr 2015 after delivery	22 May 15 after baking
398m3	Lsc (mm)	40.93 ± 0.51		37.35 ± 0.47	38.33 ± 0.47
	Abs (%)	98.35 ± 0.7		96.37 ± 1.41	96.93 ± 1.19
	Date Meas.	28 Dec 2014	28 Dec 2014		
397m0	Lsc (mm)	48.20 ± 0.63	48.01 ± 0.42		
	Abs (%)	92.98 ± 0.5	93.05 ± 0.37		
	Date Meas.	22 Apr 2015 after trip to Novo	22 Apr 2015 after trip to Novo	16 Apr 2015 pre-baking	17 Apr 15 after baking
NOV LNF2 t1	Lsc (mm)	50.35 ± 0.36	49.79 ± 0.18	44.64 ± 0.63	49.62 ± 0.46
	Abs (%)	96.08 ± 0.05	96.26 ± 0.06	96.59 ± 0.42	96.59 ± 0.47

2 small tiles with polished surface has been sent to Ferrara for tests

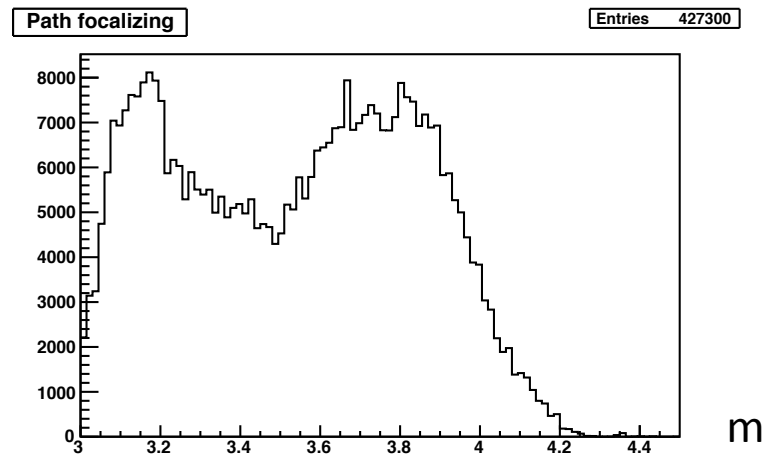
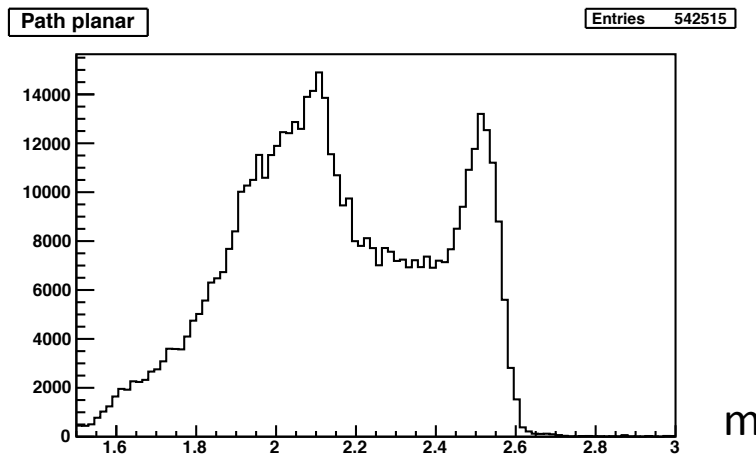
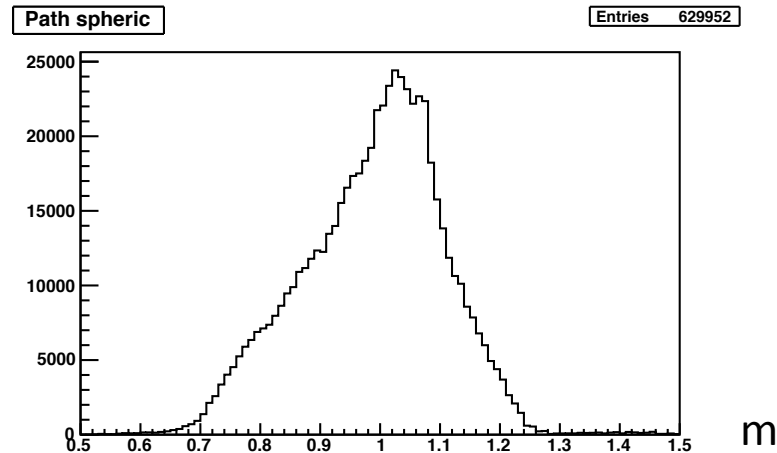
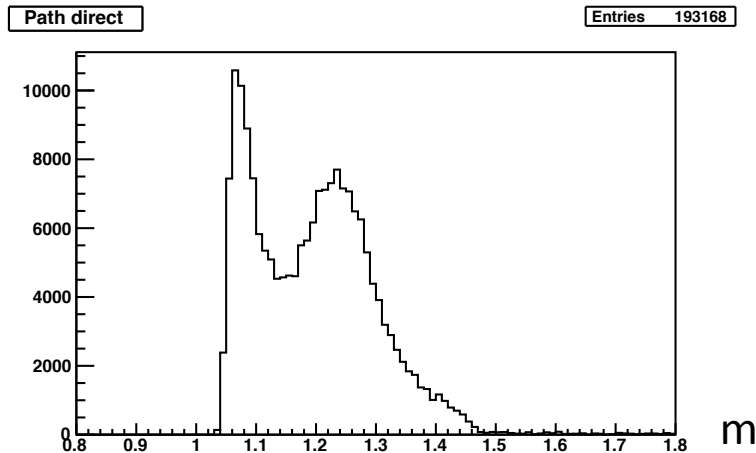
Photon Path Length

Negative pions, 7.5-8.0 GeV/c



Photon Path Length

Negative pions, 3.5-4.0 GeV/c



Dry Cabinet



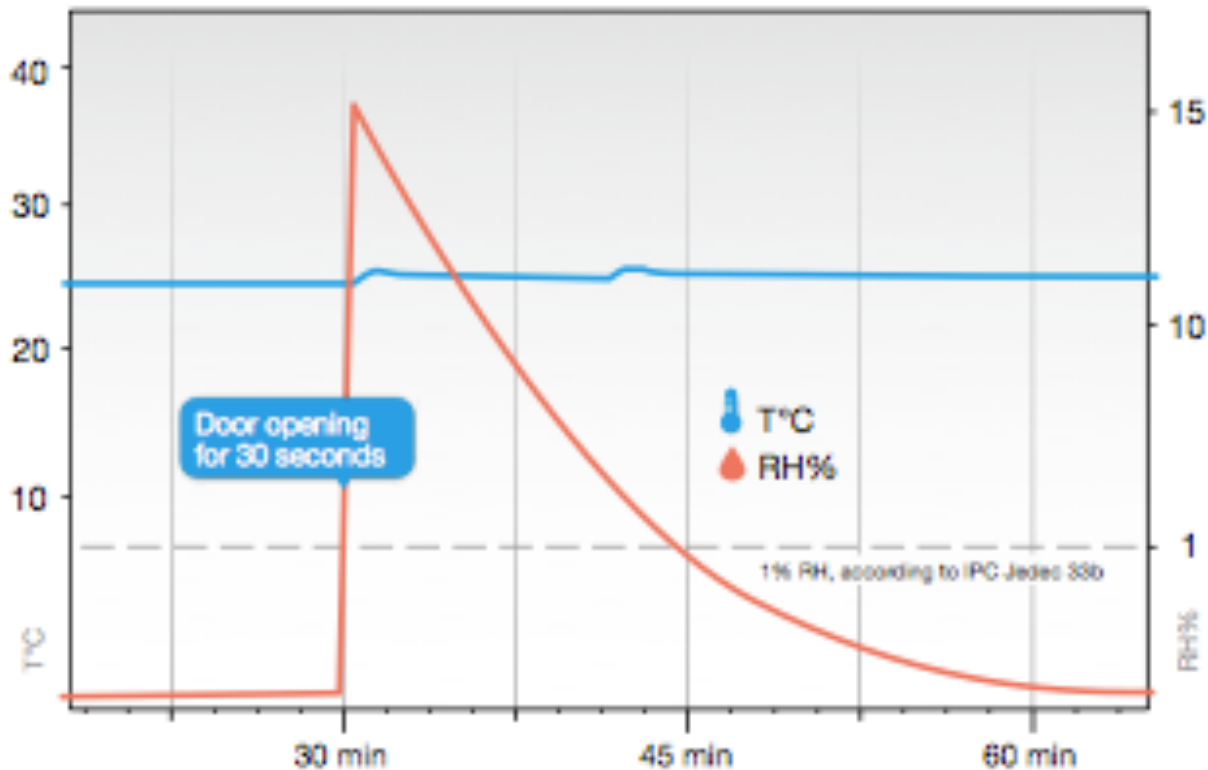
[Richard Heimsch](#)

[Director](#)

www.superdry-totech.com

info@totechamericas.com

Delivery time ~2 weeks



Dry Cabinet

SD 702-21

6959 \$

SD 1104-21

8750 \$

SD 1106-21

Ext. dimensions: 620 x 1840 x 768 mm
Int. dimensions (whd) (excl. dry unit): 610 x 1533 x 735 mm
Accuracy of sensor RH% & T°C (+/- 3% RH, +/-0.3 °C)
Effective capacity: 680 l
Weight: 152 kg
ESD safe design
Doors lockable with key
Number of shelves: 5
Drying unit: 1 x U-2000 for $\leq 1\%$ RH*
Power consumption: 35 W/h

Ext. dimensions: 1200 x 1840 x 658 mm
Int. dimensions (whd) (excl. dry unit): 1190 x 1533 x 630 mm
Accuracy of sensor RH% & T°C (+/- 3% RH, +/-0.3 °C)
Effective capacity: 1179 l
Weight: 176 kg
ESD safe design
Doors lockable with key
Number of shelves: 5
Drying unit: 2 x U-2000 for $\leq 1\%$ RH*
Power consumption: 70 W/h

Ext. dimensions: 1200 x 1840 x 658 mm
Int. dimensions (whd) (excl. dry unit): 1190 x 1533 x 620 mm
Accuracy of sensor RH% & T°C (+/- 3% RH, +/-0.3 °C)
Effective capacity: 1179 l
Weight: 176 kg
ESD safe design
Doors lockable with key
Number of shelves: 5
Drying unit: 2 x U-2000 for $\leq 1\%$ RH*
Power consumption: 70 W/h

* Depending on amount of dooropenings



Dry Cabinet



4100 \$

5100 \$

2350 \$



Ext. dimensions: 500 x 630 x 580 mm
Int. dimensions (whd) (excl. dry unit) : 490 x 560 x 530 mm
Accuracy of sensor RH% & T°C (+/- 3% RH, +/-0.3 °C)
Effective capacity: 135 l
Weight: 37 kg
ESD safe design
Door lockable with key
Number of shelves: 3
Drying unit: 1 x U-2000 for ≤1% RH*
Power consumption: 35 W/h

SD 151-21

Ext. dimensions: 500 x 1127 x 640 mm
Int. dimensions (whd) (excl. dry unit) : 490 x 1124 x 594 mm
Accuracy of sensor RH% & T°C (+/- 3% RH, +/-0.3 °C)
Effective capacity: 320 l
Weight: 68 kg
ESD safe design
Doors lockable with key
Number of shelves: 7
Drying unit: 1 x U-2000 for ≤1% RH*
Power consumption: 35 W/h

SD 302-21

Ext. dimensions: 880 x 898 x 740 mm
Int. dimensions (whd) (excl. dry unit) : 870 x 830 x 702 mm
Accuracy of sensor RH% & T°C (+/- 3% RH, +/-0.3 °C)
Effective capacity: 496 l
Weight: 70 kg
ESD safe design
Doors lockable with key
Number of shelves: 3
Drying unit: 1 x U-2000 for ≤1% RH*
Power consumption: 35 W/h

SD 502-21