

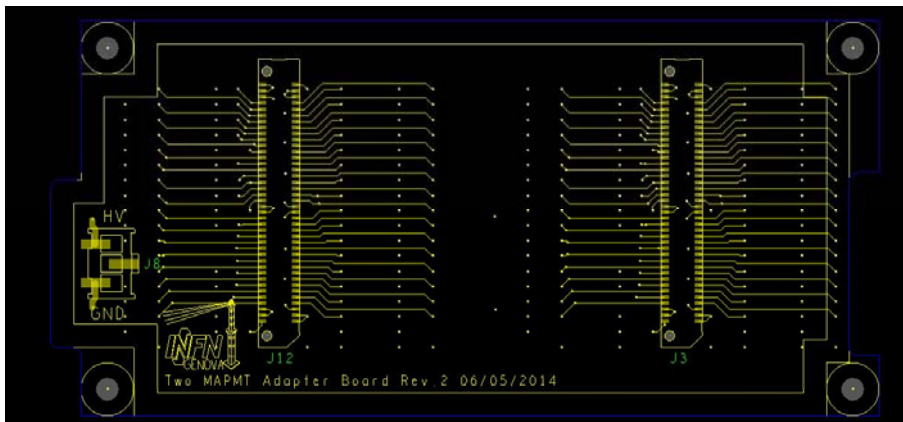
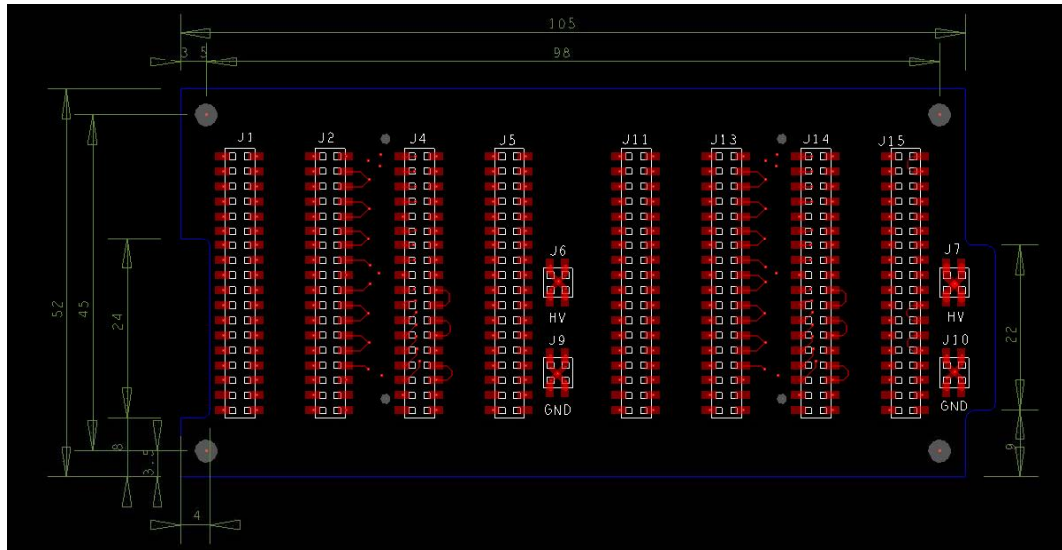
# Adapter Boards Design in Genova

- Following the drawings sent around from Dario, we are finalizing the PCB design of the Adapter Boards for the 2 sizes (x2 and x3 H-8500)
- 4 layers, 1.6 mm thick PCB
- Filled via technology to avoid holes (gas tight)
- Only 4 (or 6) mechanical positioning holes for the ERF8 connectors have to be sealed (glued) after assembly

May 09 2014

Friday meeting: Adapter Boards

# Adapter Board 2x



- Dimensions as in Dario's drawings
- Rounded all corners
- IPL1 3 pin connector for HV (IPDI on cable). Mid pin floating

# Adapter Board 3x

May 09 2014

Friday meeting: Adapter Boards

